

# VILLAGE NURSERY

2026

*The  
Glory of  
Gardening  
starts  
with us!*

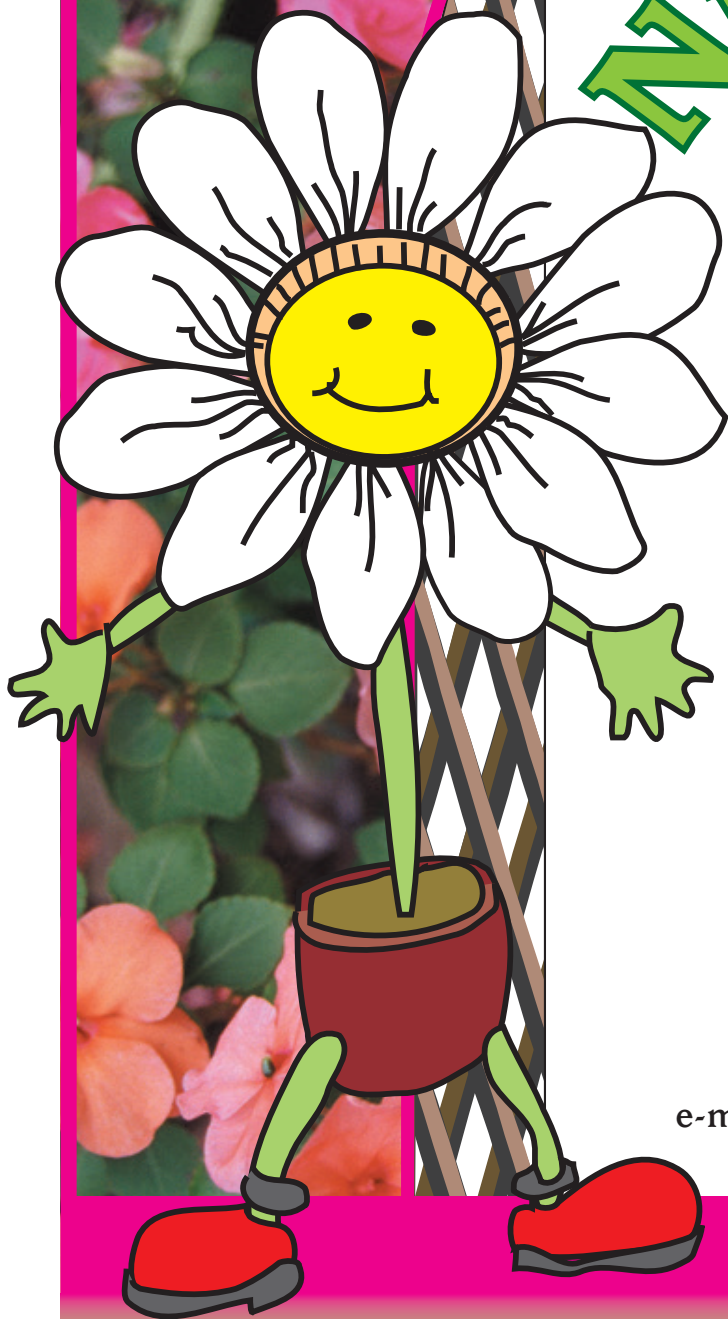
**PLEASANTVILLE**

2 KM ON LAKE CENTRE RD.  
ROUTE 331 SOUTH

e-mail: [dazee@villagenursery.ca](mailto:dazee@villagenursery.ca)


**902-543-5649**

Visit [villagenursery.ca](http://villagenursery.ca)  
*... where Quality Grows*



# A Letter from Albina

We're back...ready to go with LOTS of fresh air & sunshine...YES!

 The sun always shines at the Village Nursery!

As always, we are here to meet your gardening needs with the “hottest” houses full of so many happy, healthy, and blooming flowers! We were blessed with a very mild winter but there is still the promise of sunnier days at the “**Village Nursery, Where Quality Grows**”.

We have a nice selection again this year of our large Bosten Ferns along with a small assortment of houseplants – much, much more!

### 48 years & still going strong!

2025 was another good year at the Village Nursery, and for that we say, “Thanks” – it’s all about you! As always, we look forward to your return and hope you continue to bring your family and friends. Our #1 goal is to do better than before and to present to you an environment in which you and your friends will enjoy.

Drop in and enjoy the lush atmosphere! I wish you another successful year of gardening, good health, and joy in general...

## Albina

### Hours:

**April 8<sup>th</sup> – May 7<sup>th</sup>** open every day **8am - 5pm**

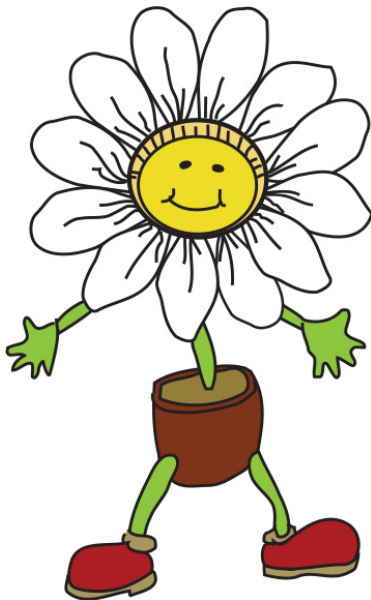
**May 8<sup>th</sup> – June 30<sup>th</sup>** open every day **8am - 6pm**

**July 1<sup>st</sup> – September 30<sup>th</sup>** open every day **8am - 5pm**

**\*We will be closed for the season on September 30<sup>th</sup>.**

### Getting Here:

From Halifax, take exit 12 off Hwy #103. Turn left onto North St. to the 5th light. Turn right, go down the hill, cross the bridge then turn left heading down 331 south (this is the main street of Bridgewater). Go approx. 8km along the "river road"- the river on the left. Watch for our Dazee logo!



### Contents

- Annuals.....2
- Broadleaf Evergreens .....3
- Deciduous Shrubs .....4
- Fruit .....7
- Grasses & Ferns .....8
- Herbs.....9
- Perennials ..... 11
- Pots & Containers ..... 18
- Roses..... 19
- Veggies ..... 20
- Vines..... 21
- Water Plants..... 22

Christmas 2026? How about a Village Nursery gift certificate? Give us a call at 902-543-5649!

# Annuals

## Key Terms:

<b>Wd</b> – Well drained	<b>LM</b> – Leaf Mold
<b>M</b> – Moist	<b>F</b> – Fertile
<b>W</b> – Woodland	<b>MT</b> – Moisture Retentive
<b>HR</b> – Humus Rich	<b>X</b> – Excellent
<b>DH</b> – Deadhead	<b>Gc</b> – Ground Cover
<b>S</b> – Sandy	<b>N</b> – Neutral
<b>PS</b> – Part Shade*	<b>A</b> – Acid
<b>P</b> – Poor	<b>Alk</b> – Alkaline

\*Part Shade: This usually means that the plant will require early morning sun opposed to noonday sun.



All heights are listed in cm.

**Pricing:** Nearly all packs contain 6 plants at \$4.09/pack. Errors in pricing can occur, all prices are final at checkout.

Species / Variety	Series	Additional Information
Ageratum	Kona	Sun-avg- 5-8" medium blue
Alyssum	different colors	Ps-avg- 4" nice for borders, trim back if it goes to seed
Amaranthus	Velvet Curtains	Sun-36"- Intense dark crimson flowers over burgundy foliage POTS \$5.99
Aster	different varieties	Sun-avg- 12-36", several different varieties, excellent for fall bloom
Begonias	Wax	Sun/Ps-avg- 6" , red,white,coral,bi-color or pink flowers. Green or bronze leaves
Celosia	different varieties	Sun-wd- 6-30" long lasting blooms, good dried, you'll be happy to have this in your garden
Cleome	Mixed & rose	Sun/wd...very tall & airy adds height and architecture to any garden & THE DEER HATE IT
Cobaea	cup & saucer vine	sun-avg- 20', planted around our perennial log house every year, V.V. POPULAR- pots \$9.99
Coleus	different varieties	Ps-wd- 12", colorful foliage, excellent shade plant
Cosmos	different varieties	Sun-wd- 28-36" compact, semi-double blooms, very showy
Dahlia	mix, individual & pot varieties	Sun-avg- 12", mix colors, semi-double 2 1/2" blooms
Dianthus	Assorted Mix	10" fantastic summer blooms... very hardy mixture of colors
D'Miller	Silver Dust	Sun-wd- 8" silver-grey foliage, it may last in the garden, as is, several years
Dried	small assort.	sun-avg, statice, Chinese lantern, silver dollar, PUMPKIN on a STIK plus others
Firecracker	Mina Lobata	Sun 10'- tri color bright Orange, yellow white 6" pot with trellis \$9.99
Flower Cabbage	Osaka mixed selection	Sun, short, beautiful for fall displays & colors
Gazania	different mixes	Sun-wd-8" flowers close at night, great for hot dry area...sold in 4/packs
Gomphrena	Las Vegas Mix	Sun 18 x 18", Best of the Best in extreme heat; mixed purples/pinks/white; great for dried bouquets
Gypsophila	Gypsy Rose	Sun-avg- 8" small double light pink flowers, great filler & in beds
Heliotrope	Marine	Sun-wd- 24" purple, vanilla scented, attracts bees
Impatiens	many colors	the perfect bedding plant for shady & semi sun....self cleaning...prfect & colorful
Lavatera	rose	Sun-wd- 28" 4" flowers with waxy sheen, gorgeous
Lisianthus	Many colors	Sold in the dome 2/pots - \$5.99 blooms late but also blooms for a long season DBL
Lobelia	Upright & trailing	Ps-wd , blues, white, red, upright & trailing & mixes
M. Glory	mix, blue/red	Sun-M- 12', sold in large & large caged pots- heavenly blue the most popular \$9.99- \$26.99
Marigold	many varieties & colors	Sun-avg ,8-20" different shades & heights of yellows, oranges, reds, mixes & bi-colors
Marigold	Lulu/L.Giant	Ps-wd- 18" very colorful, fills in nice, makes a great super fantastic fall display of colors
Metampodium	Jackpot Gold	Sun-12"- Excellent in Hot & Humid climates. Self cleaning
Nasturtium	various colors	Sun-dry- 12" ,good old fashioned Nasturiums,good for poor soil; Grandma's favourite
Nemophila	Baby Blue Eyes	Sun/Ps 12" lovely filler plant
Nicotiana	Mix	sun-Ps 24" lovely colors nice border plant
Pansy/Viola	faces & plain & frost hardy	Sun/Ps-wd- 6" beautiful happy faces
Petunia	Dbl, single, wave	Sun-avg- 10", many varieties color & habit. Waves 1/POT- \$3.99
Portulaca	different colors	Sun-wd- 6", moss rose, gorgeous blooms
Salvia	Assorted/farinacea	Sun/Ps-wd- 12-30" red, white, burgundy, bi-color & mix
Snaps	Assorted	Sun/Ps-avg-12"-3" , individual & mixed colors
Spanish Daisy	profusion	Sun/Ps-avg- 8",prostrate branches with delicate white daisy's, great filler...popular
Stocks	Mix	Sun/Ps-wd-12", highly recommended for bedding plants
Sunflower	different colors & heights	Sun-avg-1-6', makes a great fall show of color
Snow Pea	Mix	Sun-HR-6', 6-7" large blooms per stem Sold in 6" pots with trellis \$9.99

Thunbergia	Blk Eyed Susan Vine	Sun-wd-vine-great for hanging baskets & containers, mixed colors - sold in 4/pack
Verbena	Assorted incl BONARIENSIS	Sun-wd- 10", very pretty, mixed , Bonariensis(20") lilac color- a must! (4/pk) -self seeding for next year
Zinnia	different varieties	Sun-wd-1-30", zinnias like it very HOT, dry & sunny

### Helpful Hints:

Deadhead spent blooms for a cleaner look & to keep new blooms arriving.  
Amend the garden soil for extra rewards!

## Broadleaf Evergreens

### Key Terms:

<b>Wd</b> – Well drained	<b>LM</b> – Leaf Mold
<b>M</b> – Moist	<b>F</b> – Fertile
<b>W</b> – Woodland	<b>MT</b> – Moisture Retentive
<b>HR</b> – Humus Rich	<b>X</b> – Excellent
<b>DH</b> – Deadhead	<b>Gc</b> – Ground Cover
<b>S</b> – Sandy	<b>N</b> – Neutral
<b>PS</b> – Part Shade*	<b>A</b> – Acid
<b>FS</b> – Full Sun	<b>^</b> - Requires winter protection
<b>P</b> – Poor	<b>Alk</b> – Alkaline

\*Part Shade: This usually means that the plant will require early morning sun opposed to noonday sun.

**ARBC** – Add small rocks over top of roots before covering to keep plants from flopping over.

Sizes are listed as the size at maturity.

Errors in pricing can occur, all prices are final at checkout.

Species/Variety	Culture Garden Use	Price
Arctosphylos Vancouver Jade	sun-ps/wd/A-6 x 3'w-slow growing ground cover shrub; white bell-shaped flower with edible berries	\$12.99
Azalea Stewartsonian'	sun-ps/hr/A/wd-4-5'; dazzling display of fiery red-orange blooms that herald the arrival of spring. EVERGREEN	\$66.99
Buxus Green Gem	Ps/Wd/F/sun may cause scorch- 3'- a superior hybrid Boxwood selection that grows into a cute, neat, tidy, uniform little ball	\$19.99
Buxus Green Velvet	Ps/Wd/F/sun may cause scorch-4 x 4'- protect from strong wind; grows slow	\$19.99
Cotoneaster d Coral Beauty	Ps/Wd/F/sun -up to 6'w, aggressive GC looks good to cover unsightly areas; glossy leaves with red berries	\$19.99
Euonymus f Emerald Gaiety	F sun-ps/wd/-3.5' x 3.5'; green leaves with white margin with a pink hue	\$19.99
Ilex com Blue Prince/Princess	Sun-ps/M-6'x5'w- M&F in one pot to grow as a single plant. DO NOT SEPARATE	\$41.99
Ilex m Blue Prince	Sun-ps/M-15'- an excellent pollenizer for female Hollies. Very hardy	\$51.99
Ilex m Princess	Sun-ps/M-15' showy bright red berries... good companion to Blue Prince or any variety male Holly	\$51.99
Pieris Mountain Fire	sun-ps/M/V WD/HR/A/prune & fertilize immediately after flwr-5 x 5'; vivid red and green foliage and white flowers. This plant is hardy, low-maintenance	\$49.99
Rhodo Minnetonka	noon shade/A/M/wd/prune & fert after flowering- 4' x 5'w; large trusses of light purple to pink flowers with Deep, red-violet flower buds	\$66.99
Rhodo Percy Wiseman	noon shade/A/M/wd/prune & fert after flowering-6 x 6'- rounded trusses of pink-flushed, cream flowers fading to creamy-white from mid-spring	\$66.99
Rhodo PJM Elite	noon shade/A/M/wd/prune & fert after flowering-5 x 5' -showy purple-pink flowers in spring and a compact upright habit	\$66.99
Rhodo Roseum Elegans	noon shade/A/M/wd/prune & fert after flowering- 8 x 8'-Vogorous; large clusters of rosy lavender bloom late spring early summer	\$66.99
Rhodo Polarnacht	noon shade/A/M/wd/prune & fert after flowering- 3 x 6'w- dark almost-black buds open to deep purple-black flowers with a dark red blotch	\$66.99
Rhodo c Album	noon shade/A/M/wd/prune & fert after flowering-5 x 5'-. Pale Lavender buds opens to bright White, Dark green leaves	\$66.99
Yucca Color Guard	bright sun, wd, poor soil, 2-3'h; long strap pointed leaves of yellow & green; white flowers; remove spent flowers to keep tidy	\$49.99

**Helpful Hints:**

Some of these plants require **burlap protection** in the winter.

Always use proper Broadleaf food and only early in the season.

**Rhoddo/Azalea:** Do not use any miticides- never water over the top of leaves; Fertilize with proper Rhoddo food, NOT Aluminum Sulphate. Fertilize in the spring and after flowering in July.

**Leaf chewing Beetles:** Use Diatomaceous Earth or Horticultural Oil; mulch to provide sufficient moisture.

**Leaves turn black and stem starts getting black:** Botrytis, usually caused by roots not taking up water each time you water it makes the problem worse. Usually caused by really wet winters & then a period of really hot weather. Cut back beyond the black. Supply good air circulation & practice good sanitation...deadhead decaying flowers.

**Holly:**

- Female hollies have a 'bump in the middle of the flower-male hollies have an indent in the middle of the flower.
- For the best results use proper fertilizer for Hollies.
- One male Holly will fertilize 5-6 females if stems are not black.
- Give 2 feedings [no more] of All Purpose Miracle Gro This is good advice for all dead-looking trees/shrubs.

Every 3 years the hollies will shed the older leaves. If, for whatever reason hollies completely de-foliate, they will usually return. Using proper fertilizer is important to the nutrient supply for the plant. Usually sold in small size packages, Aluminum Sulphate is NOT a fertilizer, it is for acidifying the soil.

## Deciduous Shrubs

**Key Terms:**

<b>DT</b> – Drought tolerant	<b>SD</b> – Sharply Drained
<b>Wd</b> – Well drained	<b>LM</b> – Leaf Mold
<b>M</b> – Moist	<b>F</b> – Fertile
<b>W</b> – Woodland	<b>MT</b> – Moisture Retentive
<b>HR</b> – Humus Rich	<b>X</b> – Excellent
<b>DH</b> – Deadhead	<b>Gc</b> – Ground Cover
<b>S</b> – Sandy	<b>N</b> – Neutral
<b>PS</b> – Part Shade*	<b>A</b> – Acid
<b>FS</b> – Full Sun	<b>^</b> - Requires winter protection
<b>P</b> – Poor	<b>Alk</b> – Alkaline
<b>MM</b> - Medium	<b>VV</b> – Very Very
<b>D</b> - Dry	<b>AM</b> – Air Movement

\*Part Shade: This usually means that the plant will require early morning sun opposed to noonday sun.

**ARBC** – Add small rocks over top of roots before covering to keep plants from flopping over.

Sizes refers to the size at maturity.

Errors in pricing can occur. All prices are final at checkout.

Variety	Culture	Price
Amelanchier canadensis.	S-Ps/M/W-up to 20'; Serviceberry, White -he ripe fruit is a small berry-like pome; dark, reddish purple to nearly black.	\$ 29.99
Amur River Privet	sun/Wd-dense growing hedging, upright olive green foliage insignificant flowers, trim 2-3 times a year potted	21.99ea
Aronia m Autumn Magic	Sun/wd, any soil-3' x 4' Edible, not sweet, year round interest	\$ 41.99
Azalea Golden Lights	sun-ps/hr/A/wd--3'- Covered in golden-yellow blooms in spring. An excellent spring display of color	\$ 69.99
Azalea Mandarin Lights	sun-ps/hr/A/wd--3'- Covered in rich orange blooms in spring. Probably the most striking flowering shrubs	\$ 69.99

Azalea Northern Hi-Lights	sun-ps/hr/wd/A-3' stunning clusters of lightly-scented pink trumpet-shaped flowers with rose overtones at the ends of the branches	\$ 69.99
Azalea Rosy Lights	sun-ps/hr/A/wd-. Prolific bloomer of deep dark rosy pink blooms	\$ 69.99
Azalea Stewartsonian'	sun-ps/hr/A/wd-4-5'; dazzling display of fiery red-orange blooms EVERGREEN	\$ 66.99
Berberis t Concorde	sun /avg/wd/prn aft flwr -2'- mounded deep maroon color all season; Good barrier plant and the thorns deter people & deer	\$ 49.99
Berberis t Royal Burgundy	sun /avg/wd/prn aft flwr *5'-clusters of yellow flowers in spring but grown primarily for it's brightly colored non- edible fruit	\$ 49.99
Buddlei Miss Molly	Sun/wd/ protect from winter wind 5 x5' fragrant flowers are the closest to red & appear for months every summer & no DH	\$ 46.99
Buddlea d Pugster Periwinkle	Sun/wd/WP-2' Large, fragrant, purply pink 8" flowers. CTS r color well into fall. A prolific bloomer ...Butterflies	\$ 46.99
Buddleia Pink Delight	Sun/wd/ protect from winter wind 5 x5' fragrant flowers -conical clusters of bright pink fragrant flowers	\$ 39.99
Cephalanthus Sugar Shack	Sun-Ps/Bog Plant,5' x 5'- Red winter fruit and glossy burgundy fall foliage. Add in cool looking, fragrant white flowers	\$ 49.99
Clethra a Ruby Spice'	sun/M/WD/clay sandy-5 x 6'-w-fragrant Rose-pink bottlebrush flowers; prune V early in spring before any new growth	\$ 29.99
Cornus Ivory Halo	sun-ps/wd/mod M- variegated green & white leaves with Red Twigs in winter	\$ 31.99
Cornus kousa Satomi	sun-ps/wd/mod M-25'- 4 pointed petal flowers are white ; extremely attractive; Red berries follow flowers	\$199.99
Cotinus c Royal Purple'	sun-ps/A/prune in spring-10', foliage dark purple, pink flowers looks like smoke-this is the best "smoke' variety	\$ 36.99
Cotinus c Winecraft Black	sun-ps/A/prune in spring- 5'-waxy leaves emerge orange maturing to a cheerful chartreuse	\$ 51.99
Cotoneaster Peking	sun-ps/A/prune in spring-5-7'; useful as a hedge; small pink 'appleblossum' flowers; small black berries in fall; beneficials	\$ 49.99
Deutzia Kodiak Orange	sun/shade/wd/drought tolerent-3-4'-bright yellow flowers with orange foliage; a native plant; deer resist.	\$ 46.99
Deutzia Yuki Cherry Blossom® PW®	Sun/ adaptable. 2 x 2' -no pruning required, bells shaped pink flowers; very deer resistant	\$ 46.99
Deutzia Yuki Kabuki	Sun/ adaptable- 2 x 2'-pink cloud of spring blooms; attracts pollinators & very deer resistant	\$ 41.99
Diervilla r Kodiak Orange	sun-ps/avy soil-4 x 4'-This shrub pushes fall color to the limits with its glowing orange fall foliage; deer resistant	\$ 41.99
Diervilla r Kodiak Red	sun-ps/avy soil-4 x 4'-This shrub pushes fall color to the limits with its glowing reddish fall foliage;deer resistant	\$ 46.99
Euonymus compactus	sun/wd-6' VV hardy; green in summer turning brilliant fire-red fall color is also displayed earlier than others.	\$ 41.99
Forsythia Northern Gold	Sun/wd-6' prune right after flowering. If you don't prune it will go wild & stop blooming, eventually	\$ 29.99
Hibiscus s Aphrodite	sun/HR/wd/neut-alk-8'-Large single crisp clean white flowers appear in late summer	\$ 49.99
Hibiscus s Blushing Bride	sun/HR/wd/neut-alk-8'-very large dbl pink flowers that matures to white; pollinators; blooms mid summer to fall	\$ 41.99
Hibiscus s First Editions	sun/HR/wd/neut-alk-8'-medium pink buds that opens to huge white flowers with Red centres;mid- fall; pollinators	\$ 41.99
Hibiscus s Helene	sun/HR/wd/neut-alk-8'-White, heavily ruffled flowers with reddish purple eyes ; Dense, more compact than others	\$ 49.99
Hibiscus s Magenta Chiffon	sun/HR/wd/neut-alk-8'-poderpuff flowers that face outward with a color burst of Magenta-Chiffon	\$ 41.99
Hibiscus s Purple Pillar	sun/HR/wd/neut-alk-8'-large showy purple flowers of purple with deep purple-red eye	\$ 41.99
Hibiscus s Starblast Chiffon™PW®	sun/HR/wd/neut-alk-8'- long-lasting blooms and beautiful white flowers with a dramatic pink starburst center.	\$ 46.99
Hydrangea a Annabelle	sun/HR/wd/8' stunning white flowers over 10" in diameter; blooms every year even after harsh pruning	\$ 29.99
Hydrangea ES Pop Star	sun-ps/M/HR / outstanding in this collection, Electric blue. Genetically compact and a strong rebloomer	49.99
Hydrangea Invincible Wee White	sun-ps/M/HR / 2.5'h, compact with large heads of pure crisp white, hundreds of blooms from summer to Fall	
Hydrangea m ES Summer Crush	sun-ps/M/HR /prune e spring/blooms old & NU wood-3'-Huge blooms repeats; blooms old & nu wood; raspberry-red-	\$ 46.99
Hydrangea m ES the Original	sun-ps/M /HR/prune early spring/blooms OLD & NEW wood- 6' Very large flowers for Blue flowers DO NOT add Lime	\$ 66.99
Hydrangea m Let's Dance Blue Jangles® PW	sun-ps/M/HR /prune early spring 2' x 3'w' repeats, excellent blue or pink depending on the pH of the soil	\$ 49.99
Hydrangea m miss Saori	sun-ps/M/HR / dbl petalled white w deep rose margin; will retain their pink color regardless of soil pH; 2014 Chelsea show	\$ 41.99
Hydrangea m Wee Bit Innocent™ PW®	sun-ps/M/HR /prune E. spring 2.5'h, compact pastels of pink, purple & blues hundreds of blooms from summer to Fall	\$ 49.99
Hydrangea p Little Lime Punch	sun-ps/M/HR / 3-5'h; transitions from white-pink - & punch red through season; prune very early spring 1/3 growth	\$ 41.99
Hydrangea s Tuff Stuff	sun-ps/M/HR /3'- red-purple lacecap shrub; reblooming;	\$ 41.99
Hypericum Blue Velvet	sun-ps/ drought tolerant/deer resistant/pollinators- 3'-Silvery blue leaves with fluffy yellow flowers;	\$ 41.99
Ilex v Southern Gentlemen	sun-ps/M-wet soil/prune E spring male pollinator & a valuable component for the eco system. Non fruiting' Winterberry	\$ 41.99

Ilex v Winter Red	sun-ps/M-wet soil/Female-valued for it heavy fruit set. One of the best 'Winterberries' . red berries from Fall-Winter	\$ 41.99
Magnolia l Leonard Messel'	Sun-ps/Wd/ 15-20'- multi stemmed, medium to slow growth; Star flowers white inside & purplish-pink on the outside	\$199.99
Magnolia x soulangeana	Sun-ps/Wd/ tolerant of clay soil 15'- Fragrant pink flowers with white interior. Saucer Magnolia	\$199.99
Magnolia x Elizabeth	Sun-ps/Wd/20-35'- large fragrant primrose-yellow flowers; a cross between a cucumber tree & a Yulan Magnolia tree	\$199.99
Philadelphus c Illuminati Tower™ PW®	sun-Ps/wd- hundreds of pure white blossoms blanket the columnar form, filling the air with sweet orange-blossom fragrance	\$ 46.99
Physocarpus o 1st E. Spicy Devil	Sun/wd-4 x 4' with colorful dark leaves and white flowers in spring	\$ 41.99
Potentilla 1st Ed.Lemon Meringue	sun/wd-Prune old wood early in spring-3', light yellow flowers with CTS bloom	\$ 41.99
Potentilla f Goldfinger'	sun/wd-Prune old wood early in spring.3' Golden yellow flowers; Prolific bloomer over a long season from summer to fall.	\$ 29.99
Potentilla f Red Robin	sun/wd-Prune out old wood in early spring 3' x 3'-Bright Red, blooms spring to frost	\$ 29.99
Potentilla f Mango Tango	Bitmap sun/wd-Prune old wood early in spring-3' orange-yellow flowers with red/apricot edge	\$ 29.99
Potentilla f Pink Beauty	sun/wd-Prune old wood early in spring-3'-a prolific bloomer with bright pink flowers	\$ 29.99
Prunus cistina Purpleleaf Sandcherry	Sun/wd-up to 10'; can be a small tree. reddish purple foliage that retains good color throughout the summer.	\$ 29.99
Salix int Hakuro Nishiki	Sun/M-12' pink stems with pink & white foliage; color will stay better if pruned back regularly	\$ 51.99
Sambucus Elder Black Lace	sun-ps/wd- burgundy colored foliage on this upright shrub Softly cut edges Bright pink flowers, blackish red berries	\$ 69.99
Sambucus Lemony Yellow Lace	sun-ps/wd-5'-white spring flowers; finely dissected foliage in a cheery gold color; lemon color into Fall; Deer resist;	\$56.99 /2g
Spiraea x vanhouttei	sun-ps/M/wd-8'- Prune every year after flwrng arching branches that give the plant a form reminiscent of a fountain	\$ 29.99
Spirea Dbl Play Blue Kazoo	sun-ps/M/wd-3'- blue foliage and white flowers work with any home color, even strong orange or red brick	
Spirea Little Princess	sun-ps/M/wd-3' Dainty clusters of rose pink blooms create a pleasing contrast with the low-growing, mint green foliage	\$ 39.99
Symphoricarpus Albus	sun-ps/wd 3-6' huge ornamental large white waxy berries	\$ 49.99
Syringa 1st Editions Little Lady	Sun/Hr/wd/Lime/prune immediately after flowering small reblooming frilly pink	\$ 49.99
Syringa Bloomerang dark Purple	Sun/Hr/Wd/Lime/ prune immed after flowering; reblooming heavily in spring with another bloom late summer	\$ 49.99
Syringa v Beauty of Moscow	Sun/Hr/Wd/Lime/ prune immed after flowering; 7'- highly fragrant double white flowers with pink blush;	\$ 51.99
Syringa v Charles Joly	Sun/Hr/Wd/Lime/ prune immed after flowering; 10', showy panicles of dark magenta fragrant double blooms	\$ 51.99
Syringa m Palibin	Sun/Hr/wd/Lime/prune imm after flowering.-5'light pink and sweetly fragrant single flowers in 4" long panicles	\$ 49.99
Syringa p Donald Wyman	Sun/Hr/wd/Lime/prune imm after flowering.-8'upright,Considered by many to be the finest lilac, lightly fragrant pinkish-purple flowers	\$ 49.99
Syringa v Sensation	Sun/Hr/wd/Lime/prune imm after flowering.-8'-bi color highly fragrant deep purple flowers with white edges	\$ 49.99
Syringa v Mme Lemoine	Sun/Hr/wd/Lime/prune imm after flowering.-8'-rone of the best white flowers, upright habit with long dbl white panicles	\$ 51.99
Syringa vulgaris	Sun/Hr/wd/Lime/prune immediately after flowering-8'- Common Lilac fragrant, single, lilac-purple flowers in late spring.	\$ 69.99
Viburnum c Spice Island	sun-ps/wd/prune after flwr- up to 12' delightfully fragrant, pink buds open to white snowball-like clusters	\$ 51.99
Viburnum c Sugar & Spice	sun-ps/wd/prune after flowering-6'- Clusters of pink buds open highly scented spicy-sweets smelling white flowers in spring	\$46.99
Weigela Electric Love	Full sun/M/F/prune after flowering-2 x 3' vibrant red blooms against deep green, nearly bronze leaves.	\$ 41.99
Weigela Black & White	Full sun/M/F/prune after flowering-4' fragrant funnel shaped white flowers & foliage is almost black	\$29.99
Weigela Crimson Kiss	sun-ps/wd/M/prune after flowering-4' clusters of crimson trumpet-shaped flowers with white throats along the branches	\$41.99

### Helpful Hints:

No pruning or fertilizer (compost is fertilizer too) to trees or shrubs after August 1<sup>st</sup> as it promotes new growth which will freeze off in the winter resulting in winter kill of the plant. Water heavily until freeze, especially on newly planted material or in a year suffering from drought.

When planting trees/shrubs it is best to not use any fertilizer in the hole, except Bonemeal, which should be worked in with the soil & peat moss, & humus should be worked well into the soil, around the roots, as well. Allow lots of room in the hole for the roots to spread out. If the root is pot bound, make several long slashes from top to bottom of the root allowing the roots to escape.

Water the hole well. It is very important to have the water in the hole where the roots are trying to get established. Cover the roots with the soil you removed from the hole & tap lightly working around the root ball & fill the hole with soil. Create a 'basin' effect to catch the water. Water well once a week even in the rain.

#### Commonly Asked Questions:

**Q:** I had several small blooms on my hydrangeas last year, so this year I have fertilized every 10 days until I saw blooms starting to develop. What else should I be doing to get big blooms?

**A:** The first rule of thumb is to NOT over-fertilize your plants. We suggest one application of granular fertilizer in spring or early summer, and then follow package instructions afterwards. If you over-fertilize, it can burn the root system of your hydrangeas and actually inhibit bloom production.

**Q:** I pruned my hydrangeas back after an early frost and now I am not seeing blooms. Why is that?

**A:** How to prune hydrangeas is a great question. If you prune your hydrangeas back to the base, that is where your new blooms will grow from! It will take some time for the new growth to develop and produce blooms. Be patient and look for the green growth coming up from the base of the plants.

#### Blooming Guide for Hydrangeas:

**Hydrangea arborescens:** Blooms on new wood, prune in late winter or early spring.

**Hydrangea macrophylla:** Blooms on old wood, do not prune. Remove only spent flowers and dead, damaged or unsightly wood.

**Hydrangea paniculata:** Blooms on new wood, prune in late winter or early spring.

**Hydrangea quercifolia:** Blooms on old wood, do not prune. Remove only spent flowers and dead, damaged or unsightly wood.

**Hydrangea serrata:** Blooms on old wood, do not prune.

## Fruit

Errors in pricing can occur. All prices are final at checkout.

Species / Variety	Culture	Price
Kiwi	Actinidia-Both M&F required. Vine/prune late winter. SUN-F/ WD soil shelter from strong wind. Issai self fruitful the smooth skinned green fruit are the size of grapes and taste like a sweet tropical kiwi without the fuzzy skin.	\$41.99
Asparagus	Asparagus -Plant roots or seed in early spring. Important to keep bed free of weeds.. Do Not cut fruit first year & very little the second year. Equinox- known for its high yield and quality, including long spears and a tight tip..	5/\$21.99
Blackberry	Blackberries Full Sun, well drained Moist humus rich soil; self pollinating. Chester- thornless; heavy crop of very large, jet black, round and very sweet blackberries in mid-late summer. Hardy Black- Thornless, bears clusters of large, sweet and juicy fruits on spiny canes.	\$29.99
Blueberries	Min.2 varieties for best production, For A soil use old sawdust/pine needles, never use lime. Full sun. Prune late winter & fertilize with 10-10-10. Keep 'witches broom out of bushes. It looks like a fast growing 'broom' & snaps off easily. Bluecrop-5 x 5' -high yields, sweet & juicy mid season;Polaris-5'- very large berry that is firm, light blue and has an excellent flavour. Duke-5-7' -ripens early; firm mildly tart berry; Elliot- tangy berries in the fall. Sweetheart-large sweet juicy fruit with a heavy crop in spring and a 2nd crop late summer. Chippewa-4' - mid Season; sweet, perfect for eating cooking and baking & preserves.	\$29.99
Horseradish	Horseradish Sun, keep well water. A very invasive, plant where can be controlled.	\$16.99
Strawberry	Strawberry Mulch in spring with well rotted real manure, Sun/M/Wd sheltered location. Eversweet-fruit produced from spring to fall, even in the hottest parts of summer. High yields.	5/\$19.99
Raspberry	Nova Red-Sun, plant 3' apart. Cut back to 1' when planting. Fruit on old wood.	5/\$19.99
Rhubarb	Rhubarb Strawberry-Sun, grows in most any soils, but is a heavy feeder. Fertilize spring with rotted manure. Strawberry Red-retains red color when cooked. Leaves are toxic; reliable.	\$19.99
Goose	Ribes Grow in Full Sun/wd/plenty of composted 'REAL' manure; prune regularly for best production. Ribes Hinnonmaki Red - outstanding flavor & high yield. Ribes Hinnonmaki Yellow-improved variety for the home orchard; sweet flesh and a tangy outer skin. Ribes Captivator Red-it 'does have a few thorns! It has delicious and abundant dark red fruit.	\$29.99

Current	Ribies au Currant Gold-10'-yellow flowers early;berries can be eaten raw or cooked. Ribies au Current Clove- highly scented,edible; prune to keep size.	\$29.99
Grape	Vitis-Easy to grow on any sunny wall or fence. Prune mid-winter/Wd/Hr/Neut-alk/Sun -#1 size. Belchas White; very productive for table & wine.fall; Beta- deep Blue-black; perfect for eating fresh, using in jam or wine recipes; Somerset- red seedless table/wine/jelly; Briana-greenish gold; Perfect as a juice grape or as a light, semi-sweet table wine; Marchel Foch wines ranging from light red wine to dark "inky" purple colour ; Frontenac Gris-white wine.	\$29.99

### Helpful Hints:

Fruit trees grow best in full sun with well-drained soil that has a sandy and loamy texture.

Deep soil is needed to support their deep root systems!

Use 1/2 lb 10-10-10 fertilizer for every year of the tree, up to 5 lbs. [MAX], on the 'drip line'-or you can use aged 'real manure' & on drip line in spring.

All fruit trees need at least 6 hours of sun each day through the summer & fertile soil with good drainage.

## Grasses & Ferns

### Key Terms:

<b>Wd</b> – Well drained	<b>LM</b> – Leaf Mold
<b>M</b> – Moist	<b>F</b> – Fertile
<b>W</b> – Woodland	<b>MT</b> – Moisture Retentive
<b>HR</b> – Humus Rich	<b>X</b> – Excellent
<b>DH</b> – Deadhead	<b>Gc</b> – Ground Cover
<b>S</b> – Sandy	<b>N</b> – Neutral
<b>PS</b> – Part Shade*	<b>A</b> – Acid
<b>FS</b> – Full Sun	<b>^</b> - Requires winter protection
<b>P</b> – Poor	<b>Alk</b> – Alkaline

\*Part Shade: This usually means that the plant will require early morning sun opposed to noonday sun.

Sizes shown are size at maturity.

Errors in pricing can occur. All prices are at checkout are final.

grass	Hakonechloa mac Aureola -16". One of the most graceful additions to ay garden, yellow green variegated foliage	\$26.99
grass	"Imperator c Red Baron-Sun-ps/WD/M- *2'- deep red, and narrow silvery flower panicles in late summer	\$16.99
fern	Matteuccia s Ostrich- Pshade-/wd/M-6'-Ostrich Fern;clump forming upward arching fronds;Fiddleheads;cinnamon fronds	\$16.99
grass	Miscanthus Huron Sunrise-plant 4'-flower stalks 6'- burgundy plumes & silver midribs	\$16.99
grass	Miscanthus s Fire Dragon - Sun/M/F 7' upright grass into intense red and orange hues. Silvery plumes dance above the fiery foliage like smoke.	\$21.99
grass	Miscanthus s Siberfeder- Sun/M/F 8` - rim back to 4" above ground early spring Large, feathery plumes that emerge a shimmering pinkish-silver in late summer	\$16.99
grass	Miscanthus s Oktoberfest-sun/wd 5'; wide green leaves with white midrib;purple red highlights; early fall blooming	\$19.99
fern	Osmunda regalis - Royal Fern-5'-A robust,forming a large clump fronds,rusty-brown ; foliage turns attractive red-brown in autumn	\$12.99
fern	Polystichum polyblepharum- Tassel Fern,lustrous, dark green fronds and unique tassel-like appearance when new fronds unfurl	\$16.99
grass	Papyrus King/Medium/Baby Tut -A- Sun-ps/M/Hr-lovely garden accent,aquatic great heads, shelter from wind one season-4' & taller- Excellent	\$11.99
grass	Pennisetum Purple Fountain -A- Sun-ps/M/Hr-3'-the foliage is topped with slender feathery pinkish flowers plumes, up to 15 in. long Excellent	\$11.99
grass	Pennisetum Vertigo -A- Sun-ps/M/Hr-Black Fountain Grass-This is a big grass—it will grow up over your head if you water it enough- Excellent	\$11.99

grass	Schizachyrium Sandhill-morning S only/wd-4'- Powder blue foliage with extra wide blade; average growth rate	\$26.99
grass	Silver Grass Variegatus- Sun/M/F 2'-A gracefully arching ornamental grass, dark green blades highlighted by creamy white stripes. Invasive plant with caution	\$11.99

### Helpful Hints:

Most grasses are deer resistant! Miscanthus is a warm weather growing plant, it needs sun & water in dry conditions.

A fern is a member of a group of vascular plants that reproduce via spores and have neither seeds nor flowers. Keep newly planted ferns well-watered for the first growing season while they are becoming established. Plant them in well-prepared soil in a protected area. Never let plants growing in 4-inch or smaller pots dry out until they reach a mature size and are well established.

Ornamental Grasses boast a huge variety of graceful, low-maintenance grasses that add a wealth of texture and movement to the landscape, in colors ranging from soft pink to bright green or intense purple. Some hardy ornamental grasses are suitable for the coldest climates, while others tolerate intense summer heat or salty air and windy coastal conditions.

## Herbs

### Key Terms:

<b>Wd</b> – Well drained	<b>LM</b> – Leaf Mold
<b>M</b> – Moist	<b>F</b> – Fertile
<b>W</b> – Woodland	<b>MT</b> – Moisture Retentive
<b>HR</b> – Humus Rich	<b>X</b> – Excellent
<b>DH</b> – Deadhead	<b>Gc</b> – Ground Cover
<b>S</b> – Sandy	<b>N</b> – Neutral
<b>PS</b> – Part Shade*	<b>A</b> – Acid
<b>FS</b> – Full Sun	<b>^</b> - Requires winter protection
<b>P</b> – Poor	<b>Alk</b> – Alkaline

\*Part Shade: This usually means that the plant will require early morning sun opposed to noonday sun.

**Pricing:** 1 pack (4 plants) = \$4.19

Single pots = \$3.19-4.99

For various reasons, some herbs may not be available, or additional herbs may be available beyond what is listed here.

Errors in pricing can occur. All prices are at checkout are final.

Anise	Wd/Hr/M	used as a flavoring agent. It has a sweet, aromatic taste that resembles the taste of black licorice
Basil [several varieties]	Wd/Hr/M	genovese the best for pesto; Nufar, Red Rubin; Spicy,Thai; & Regular sweet Basil
Basil EmThai Towers	Wd/Hr/M	Abundant licorice-flavored leaves enhance Thai soups, curries, stir-fries
Basil Emerald Towers	Wd/Hr/M	3'-Well-branched with short internodes makes a beautiful, towering plant with huge harvest potential that stays tidy for many uses
Basil Emerald Lemon	Wd/Hr/M	3', bright Lemob flavored, use in dressing, casseroles salad & wherever Lemon flavoring required
Basil Fresca	Wd/Hr/M	the BEST Genovese type
Basil Amethyst	Wd/Hr/M	same taste as regular sweet Basil. Use it fresh to retain the beautiful color. Productive and very late-flowering
Basil Aristotle	Wd/Hr/M	same peppery flavor as other Basils; green, small leaves
Basil Holy	Wd/Hr/M	Spicy flavor especially used in Thai cooking. Offers numerous health benefits, ie BP, Immune rsnponse, Blood sugar, Inflammation etc.
Basil Trybasil	Wd/Hr/M	Try A Trio' Genovese, Serrated Green & dark Red Selections all in one plug
Borag Officinalis	Sun/wd/Hr	chop leaves & flowers to salad & drinks/tea & honey & lemon.good companion plant for tomatoes, squash & strawberries
Calendula Pot Marigold	Sun/wd/Hr /P	cheerful, daisy-like blooms in shades of yellow, orange, and cream. It has a long history of use as a medicinal and culinary herb
Cat Grass	Sun/wd/Hr	your cats will love you for this treat
Chamomile German	pH6.7/Wd/S	best for tea, the most prolific producer of flowers

Chamomile Roman	pH6.7/Wd/S	traditional ground cover in english gardens & pathways where it is cut like grass
Chervil	Sun/wd/Hr	used in soups & salads, can improve every dish in which parsley is used, great for garnish
Chives Broadleaf	Sun/wd/Hr	rhizome&leaves are edible & can be used in dishes the same way that garlic or garlic chives are used; leaves twisted in early growth
Chives Regular/Garlic	Sun/wd/Hr	uses too numerous to mention
Cilantro-Coriander	Sun/wd/Hr	Chinese parsley, grown for it's seed, add to soup, stews or exotic dishes & Vietnamese
Curry plant	Sun/wd/Hr	brush against the plant for a curry fragrance, curry great in potato salad too
Dill Regular	Sun/wd/Hr	great in potato & other salads & of course pickles
Fennel Sw Orion[Drag	Sun/wd/Hr	crisp sweet licorice-flavored bulb, but the fonds are used for garnish, and stalks are great in a broth.
Lemon Balm	Wd/pH7.0-	attracts bees, used in tea to soothe nerves
Lemon Grass	Sun	A common ingredient in Thai and Vietnamese cooking, among other Asian cuisines, it has a lemon scent and tartness
Lovage	Sun/wd/Hr	leaves can be picked fresh for salads, celery flavor, add to soups for a fascinating flavor
Marjoram Sweet-A	Sun/wd/Hr	used in many Italian & Greek dishes, a must in every herb garden. Used interchangeably with oregano
Mint Chocolate	Sun/wd/Hr	Leaves of chocolate mint plants add versatility to drinks, desserts and garnishes.
Mint Kentucky Colonel	Sun/wd/Hr	The mint of choice for both Juleps and the Mojitos, a Cuban version of the Mint Julep.
Mint Mojito	Sun/wd/Hr	very very popular for Mojito cocktails
Mint Peppermint (cuttings)	Sun/wd/Hr	relaxes the digestion system causing belching,also for headaches, bowel,muscle & nerve conditions
Mint Spearmint (cutting)	Psbest/Wd .M/Hr	mint jelly, teas, more flavorful before it flowers-don't forget that mint can be kept under control in a pot
Nepeta common	Sun/wd/Hr	Catnip, Excellent for tea
Oregano Greek	pH6.7/Wd/S	best known with tomato sauce, hot peppery flavor
Oregano Hot & Spicy	pH6.7/Wd/S	is a great addition to Mexican and Mediterranean dishes with the heat of a mild chilli pepper
Oregano Italian	Sun/wd/Hr	Its taste is zesty and strong and is commonly used in Italian dishes.
Parsley Flat & Curled	Sun/wd/Hr	Italian(flat leaf) stronger flavor & most popular by chef's, curled more popular to decorate food
Rosemary off Arp	Sun/wd/Hr	More hardy than most Rosemary'sgood flavor for culinary use; Well suited to regular pruning for small topiaries. Evergreen.
Rosemary off Barbecue	Sun/wd/Hr	makes an excellent potted plant. Valuable culinary uses...Not hardy
Rosemary off common	Sun/wd/Hr	many culinary uses. Rosemary compliments pork, fish, lamb, poultry, wild game, mushrooms & potatoes
Rosemary off (cuttings)	Sun/wd/Hr	this Rosemary is a true Rosemary grown from cuttings instead of seed
Rosemary off Gorizia	Sun/wd/Hr	upright(bonsai)- Spicy,ginger fragrance.Leaves are popular for seasoning meats, stews, and sauces. Not hardy
Rosemary off Prostratus	Sun/wd/Hr	creeping, ground cover, pine scented, pollinators
Rosemary off Salem	Sun/wd/Hr	upright variety can be used for topiary and of course for cooking & drying; pale blue flowers
Rosemary off Tuscan Blue	Sun/wd/Hr	upright & columnar. Flavor & aroma milder than others
Sage Bergarten	Sun/wd/Hr	same as common with LOTS of leaves & no flowers- sauces, stuffings,soups,salads,pork & sausage.
Sage off common	Sun/wd/Hr	creeping most common type for flavoring.
Sage Pineapple	Sun/wd/Hr	younger leaves have a greater pineapple scent. steeped in hot water for tea or chopped up and used in other fruit beverages and smoothies.
Sage Purple	Sun/wd/Hr	attractive edible border around herb gardens and vegetable gardens. The flowers attract butterflies and beneficial insects as well.
Sage Tri-color	Sun/wd/Hr	although this herb has the same uses as regular Sage the Tri-color is mainly ornamental..hardy
Savory Summer	Sun/wd/Hr	lemon for tea, summer savory the most popular for flavoring
Savory Winter Satjura	Sun/wd/Hr	cherished for centuries for its culinary, medicinal, and ornamental value. Attracts pollinators, bees love it, good to plant near bee hives
Stevia	Sun/wd/Hr	a sweetener from natural sources,V V SWEET
Tarragon French (cuttings)	Sun/wd/Hr	essential in sauces,omlettes,marinated meats , so many uses, crush leaves & add to cheese sauce
Thyme Caraway	Sun/wd/Hr	this herb has a strong scent and can be used as a substitute in any recipe
Thyme Doone Valley	Sun/wd/Hr	perfect small leafed & veryflat, great for walkways & easily to propogate
Thyme v French	Sun/wd/Hr	Summer Thyme” is an ideal culinary ingredient. With a spicy aroma, thrives as an herb that enhances and preserves food!
Thyme v English	Sun/wd/Hr	although thyme's have different uses all are useful in cooking
Thyme v Golden Lemon	Sun/wd/Hr	This thyme, with its colorful leaves and slight lemon scent
Thyme v Pink Chintz	Sun/wd/Hr	ground cover in low foot traffic areas, yielding a lovely lemony fragrance. Abundance of bright pink flowers
Thyme v Silver Edge	Sun/wd/Hr	The leaves can be used to add flavor to meat dishes, stuffing, stews and marinades.
Verbena Lemon	Sun/wd/Hr	The Queen of lemon-scented herbs;many uses including oils & all lemon flavorings..cold protect
Zaatar(origanum syriacum	Sun/wd/Hr	one of the world's greatest seasonings; gives life to soups,dips; mix with olive oil on flatbreads

**Helpful Hints:**

Herbs grow best in deep, composted amended soil in a sunny location!

Planting an herb garden is not any different than any other kind of garden. Herbs generally require full sun, and it might be necessary to protect your garden from drying winds with a fence or screen. Herbs aren't particular about the soil but as with most plants, do require good drainage with added compost or well-rotted manure. Consider building raised beds. Add definition & visual interest with paths. Curved paths add more interest & as a focal point at the end of a path add statuary, a sundial, or a nice bench.

## Perennials

**Key Terms:**

<b>VV</b> – Very Very	<b>SD</b> – Sharply Drained
<b>Wd</b> – Well drained	<b>LM</b> – Leaf Mold
<b>M</b> – Moist	<b>F</b> – Fertile
<b>W</b> – Woodland	<b>MT</b> – Moisture Retentive
<b>HR</b> – Humus Rich	<b>X</b> – Excellent
<b>DH</b> – Deadhead	<b>Gc</b> – Ground Cover
<b>S</b> – Sandy	<b>N</b> – Neutral
<b>PS</b> – Part Shade*	<b>A</b> – Acid
<b>FS</b> – Full Sun	<b>^</b> - Requires winter protection
<b>P</b> – Poor	<b>Alk</b> – Alkaline

\*Part Shade: This usually means that the plant will require early morning sun opposed to noonday sun.

**Pricing:** \$5.99/pack (2-4 plants/pack), 3” pots stating at \$4.99+ tax.

Errors in pricing can occur. All prices are at checkout are final.

Species/Variety	Description	Price
Achillea Milly Rock Terracotta	Sun/any/wd-12", Yellow-Orange; fertilizer once a month; CTS; attracts beneficials	\$12.99
Achillea m Sky Fire	Sun/any/wd-10"; foliage & flower red; compact	\$5.99
Achillea m Summer Berries	Sun/any/wd-2'-rose flat-top flowers with pink overtones and creamy white eyes ,early summer to early fall. X cut	\$5.99
Achillea p Peter Cottontail	Sun/any/wd-20" white, button-like flowers that attracts bees and butterflies.	\$12.99
Achillea Sassy Summer Taffy	Sun/any/wd-2' -dark salmon-pink flower clusters from early summer to early autumn.	\$19.99
Actaea	SEE CIMICIFUGA	
Aegopodium p Variegatum	shade/wdm/Goutweed, GC that quickly forms a dense, weed-proof carpet, even under difficult growing conditions.	\$9.99
Agastache Blue Fortune	sun-ps/wd/M-3'- lavender blue flowers and know for it's long blooming season sun-ps/wd/M	\$19.99
Agastache Honeysticks Ember	sun-ps/wd/M-18"-known for its striking orange-red flower spikes, attracting pollinators and adding color to gardens.	
Agastache 'Kudos Coral	sun-ps/wd/M- 16" long lasting, glowing color. Warm, coral colored plumes are dense honey-mint scent	\$12.99
Agastache Rosie Posie	sun-ps/wd/M-2', dense rosie flowers, upright habit; aromatic mint scented leaves	\$12.99
Ajuga Black Scallop	shade/wd/M/HR-4"-ground cover black scallop edge;short spikes of fragrant deep blue flowers	\$9.99
Alcea r Chaters Dbl Yellow'	sun/wd/f- 6'-mid- late blooming, gorgeous double mix blooms, showy flowers, tall & stately	\$9.99
Alcea r Chaters Double Purple'	sun/wd/f- 6', mid- late blooming, gorgeous double mix blooms, showy flowers, tall & stately	\$9.99
Alcea r Chaters Magnificent Dbl Mix	sun/wd/f 6', mid- late blooming, gorgeous double mix blooms, showy flowers, tall & stately	\$5.99
Alcea r Mars Magic	sun/wd/f-8'-brilliant red colors. single flowers on tall, sturdy stalk	\$5.99
Alcea r nigra	sun/wd/f-8'-Deep blackish-purple, single flowers on tall, sturdy stalk	\$5.99
Alcea r Peaches & Dreams	Sun/wd/HR-4-6';fully double, peach-colored blossoms which are sometimes tinged with raspberry-pink.	\$5.99
Alcea Spotlight Sunshine	Sun/wd/HR 6'- single yellow flowers, blooms first year; can self seed. Hummers, bees, butterflies visit often	\$9.99

Alchemilla mollis	sun-ps/grows anywhere-8"- soft, scalloped leaves & frothy yellow-green flowers, ideal for groundcover and low-maintenance gardens.	\$9.99
Allium Chives (herb)	sun-ps/wd/ 18"...edible with nice round purple flower heads...	\$5.99
Allium Glitterbug Bees Knees	sun-ps/wd14"- glossy green foliage and masses lavender purple golf ball sized flowers; pollinator magnet	\$19.99
Allium Millenium	sun-ps/wd-20"-large rosy purple floret 2" across; great for floral arrangements	\$19.99
Alstromeria Nicholas'	Sun/wd-20"Perfect for containers. Peruvian, bright orange-red petals yellow throats and bold maroon streaks,	\$16.99
Alyssum Aurinia sax Gold Rush	sun/wd- low growing prune all Alyssum back by 50% after blooming	\$5.99
Amsonia Blue Ice	sun-ps/wd/M but not soggy-2'- cut back by 30-50% after flowering to maintain shape; 1st rate garden plant	\$12.99
Amsonia hubrichtii	sun-ps/wd/M but not soggy-2'- a slow-growing, clump-forming sky-blue spring , and golden fall color.	\$16.99
Amsonia t Storm Cloud	sun-ps/wd/M but not soggy-2'-Terminal clusters of blue, star-shaped flowers bloom in late spring.	\$26.99
Anemone j Whirlwind	Ps/wd-4'- with semi-double 4" flowers are white and appear mid to late summer	\$12.99
Anemone t Robustissima	Ps/wd/3'-thrive in partial shade and tolerate poor soils; cup shaped pale pink; the deer LIKE this :(	\$16.99
Aquilegia EB Red Yellow	sun-ps/wd-12"-compact a profusion of long-spurred, yellow flowers. late spring to early summer,	\$9.99
Aquilegia Songbird Cardinal	sun-ps/wd-2'-Compac, upward-facing flower, red and white bicolor flowers, up to 3 in. long	\$9.99
Armeria Drem Hypnotic Dreams	s/wd-15" magenta; very versatile & attractive to beneficials; deer resistant; continuous bloomer	\$12.99
Artemesia s Silver Mound	S/poor-12";fine silvery needle-like leaves that create a silky mound of soft foliage. Trim when leggy	\$19.99
Asarum canadensis	ps/MW/ boggy-roots have a spicy fragrance;heart shaped glossy leaves spread over shady area	\$26.99
Asclepias i Cinderella	sun/med- M soils-2-4';pink to dk pink with white crowns;fragrant;good cut; pollinators; Native	\$19.99
Asclepias syriaca	sun/wd/M -common milkweed; plays a critical role in supporting Monarch Butterflies	\$12.99
Asclepias tuberosa	sun/wd/M 18", excellent summer blooms; yellow-orange; fragrant & attractive to butterflies	5.99- 19.99
Aster d Jenny'	S/wd-2'-2" purple-red fls; X attractive; late blooming ; pollinators	\$9.99
Aster d Kristina'	S/wd-3'-2" pure white fls; X attractive; late blooming ; pollinators	\$9.99
Aster novi-belgii 'Alert'	S/wd-12"-2" crimson red starry fls; X attractive; late blooming ; pollinators	\$9.99
Aster Show Magenta	S/wd-12"-2" fully dbl magenta fls; X attractive; late blooming ; pollinators	\$16.99
Aster Show Pretty Pink	S/wd-12"-2" fully dbl bright pink fls; X attractive; late blooming ; pollinators	\$16.99
Astilbe a Fanal	Ps/wd/M- 3'- award winning Astilbes; Red flowers held in long, gracefully arching plumes; abundant blooms	\$19.99
Astilbe a Weisse Gloria	Ps/wd/M - 30" snow white flowers in pyramidal plumes	\$12.99
Astilbe c Hot Pearls	Ps/wd/M -18" -dense clusters -red flowers held on long dark-red stems	\$12.99
Astilbe Purple	Ps/wd/M - 2'- early summer, each plume consists of hundreds of densely packed tiny purple flowers ...	\$9.99
Astilbe t Ostrich Plume	Ps/wd/M -27"; Large 8" long arching sprays of Coral-pink	\$12.99
Astrantia Burgundy Minor	sun-ps/M-12"- large deep red flowers with spiky centres;	\$16.99
Astrantia m Hadspen Blood'	sun-ps/M- 2' deep ruby red pincushion like flowers	\$16.99
Baptisia australis	S/wd/M 3-4' purple, lupine-like flowers in erect racemes (to 12") atop flower spikes	\$19.99
Baptisia Indigo Spires#	sun/wd/M-4'- long purple spikes with deep yellow keel	\$26.99
Baptisia Musical Duet	sun/wd/M- 3' unique bicolor flowers, white & violet blooms, making it a standout choice for any garden.	\$29.99
Bellis Habanera Mix	sun/wd 4", continuous 1" blooms, mixture of red, pink & white colors	\$5.99
Bergenia Fairytale Romance	s-ps/wd-22"- evergreen leaves and clusters of shell pink flowers in spring	\$29.99
Brunnera m Queen of Hearts#	Ps/mod M-18" early blue flowers; frosted silver heart-shaped leaves,	\$29.99
Cactus Prickly Pear(Optunia)	sun/V.V.Wd 8", mid season blooms, use high potash to bring into flower, let dry completely in winter	\$9.99
Campanula Birch Hybrid'	F sun/wd-6" x 12"- vigorous low growing blue & white bell shaped flowers; a real eye catcher	\$9.99
Campanula g Superba'	F sun/wd-2-3'- clusters of bell shaped upward facing violet blue flowers	\$9.99
Campanula m Champion Blue	F sun/wd- compact heavy bloomer with deep, dark, purple-blue, bell shaped flowers. X cut Attracts hummingbirds	\$5.99
Campanula p Blue Waterfall	F sun/wd/shade tolerant-8" Dark blue, bell-shaped flowers in Summer with some repeat bloom in Fall.	\$12.99
Campanula Rapido Blue blue clip	sun-ps-8" opens up to upward facing 'cup-like' blooms..very nice; mid-season blooms	\$5.99
Campanula Rapido white	sun-ps-8" opens up to upward facing 'cup-like' blooms..very nice; mid-season blooms	\$5.99
Carnation Grenadine Mix	sun/wd/avg 24", mid season blooms, excellent selection, good cut flowers	\$5.99
Centaurea montana Blue	S-ps/wd/-20"; cornflower blue flowers in spring- E.summer	\$12.99
Cerastium tomentosum	sun/dry 5", early bloomer, snow-in-summer, large white flowers, abundant blooming	\$5.99
Ceratostigma plumbaginoides	sun-Ps/M but wd-12'- a low growing perennial with gentian blue flowers & attractive foliage	\$12.99
Chrysanthemum m Mam White Daisy	Sun/wd-3x4'-Semi- pure white flowers with bright yellow centers; mature plants form a Huge mound.hardy	\$16.99

Chrysanthemum m Mam.Red Daisy	Sun/wd-3x4'-Semi-dbl red flowers bright yellow centers; mature plants form a Huge mound.hardy	\$16.99
Cimicifuga [Acatea] Chocoholic	PS/M/HR- 30-deep burgundy purple foliage with slender fragrant pink flower	\$26.99
Cimicifuga[Acatea] Misty Blue	PS/M/HR- 30"-sml reddish stems; blue green foliage with white flowers	\$19.99
Coreopsis Double the Sun	sun/wd-12-14"- offers X heat and drought tolerance once established;.large semi dbl yellow flowers	\$5.99
Coreopsis g Sunkiss	sun-wd.-16-18"; upright bushy plant loaded with HUGE bright yellow flowers; DH for repeat blooms	\$5.99
Coreopsis Jethro Tull	Sun/any/wd/M-12"- blooms profusely early- mid summer golden flowers	\$12.99
Coreopsis v Moonbeam	Sun/any/wd/M- 18" fine, thread-like foliage with abundant small golden-yellow flowers.	\$16.99
Coreopsis v Szl&Spc Hot Paprika	Sun/any/wd/M-18" This easy care, hardy perennial adds a bright spot of color all Summer long.	\$19.99
Corydalis Porcelain Blue	S-ps/avg/M-12"-fragrant sky-blue trumpet flowers rise above mounds of blue-green foliage; repeat	\$21.99
Crocoshia Lucifer	sun/wd 30", mid season blooms, long lasting intense red blooms, must be lifted & dried in the Fall	\$12.99
Delosperma Del Fuchsia	Sun/M/WD-4" a hardy drought tolerant perennial commonly called Ice Plant; attracts pollinators	\$12.99
Delosperma Ocean Orange Vib	Sun/M/WD-4" a hardy drought tolerant perennial commonly called Ice Plant; attracts pollinators	\$12.99
Delphinium Delgenius Breezin	sun-ps/wd/M/HR- 32"-regal purple with lavender tones and green "bee" centers,	\$12.99
Delphinium Delp'Rose Wh B'	sun-ps/wd/M/HR- 3'- Pink w Bee	\$12.99
Delphinium e Fountain Mix	sun-ps/wd/M/HR- 3', early to late blooming,flowers are semi-double to double mixed colors	\$5.99
Delphinium e M Fntn dkBlue wht B	sun-ps/wd/M/HR- 3'- Sky Blue with white Bee	\$5.99
Delphinium e M Fntn Cherry Blm w ht B	un-ps/wd/M/HR- 3' soft pink with White bee	\$5.99
Delphinium e M Fntn Lavender Wht B	sun-ps/wd/M/HR- 2-3' large semi dbl lavender florets with white Bee	\$5.99
Delphinium e M Fntn Pure Wht	sun-ps/wd/M/HR- 3' pure white with white bee	\$5.99
Delphinium h Pac Gts Black Knight	sun-ps/wd/M/HR- 6' dark purple with dark bees.... For best results provide staking	\$5.99
Dianthus b Barbarini Mix	sun/wd/M 8"-dwarf Sw Wm- late summer blooms of pink, white red; DH for more flowers	\$5.99
Dianthus b Oeschberg[sw wm red]	sun/wd/M-10"- Dramatic rich red fragrant flowers; Sweet William The PRETTY POPPERS™ Series are semi-evergreen perennials and offer an abundance of red, pink, and white flowers; perfect for the front of the border. Dramatic, rich red flowers	\$5.99
Dianthus b Rockin Red [RED]	sun/wd/provide moisture-18" use in baking etc for clove flavoring; barbatus...sweet william	\$5.99
Dianthus b Sw Wm	sun/wd/provide moisture-3' Tall old fashioned Dbl Mix of brilliant colors	\$5.99
Dianthus c Super Trouper Orange	sun/wd/provide moisture- 14" Clove scented peachy orange fully double flowers with frilly edge	\$12.99
Dianthus d Artic Fire	sun/wd/provide moisture- 6" - white with red centres	\$5.99
Dianthus Everlast Pink to White	sun/wd/provide moisture- 14" DH soft pink to white; flushes throughout the season; fragrant	\$16.99
Dianthus Everlast™ Ruby Edge	sun/wd/M-12" fragrant purple with white Dianthus flushes early in Spring,& again in fall	\$19.99
Dianthus Mt Frost Red Garnet	sun/wd/provide moisture-14 vibrant striking deep red flowers, silver-blue foliage, and long blooming season	\$16.99
Dianthus Single Ladies Red Rouge#	sun/wd/M- 8" multiple layers of large, single Burgundy red flowers.	\$16.99
Dicentra f Luxuriant'	sun-ps/wd/M/HR 14" long blooming season,cherry red heart shaped flowers.deer resist	\$16.99
Dicentra s Valentine Hordival	sun-ps/wd/M/HR - 30" red heart shaped 'bleeding' flowers ALL Dicnetra are Deer & rabbit resistant	\$26.99
Dicentra spectabilis	sun-ps/wd/M/HR 44", mid season bloomer, old fashioned bleeding heart, pink flowers	\$26.99
Digitalis Dalmatian Mix	ps/wd/M/HR 4', blooms early to late, large bellflowers, dense spikes, healthy & uniform grower.	\$5.99
Digitalis Dalmatian Purple	ps/wd/M/HR-4'-boasting upright spikes of outward facing, lilac purple flowers with maroon spotted throats. Early to mid flowering	\$5.99
Digitalis Dalmatian Rose	ps/wd/M/HR-4'-boasting upright spikes of outward facing, Rose flowers with maroon spotted throats. Early to mid flowering	\$5.99
Digitalis Foxy	ps/wd/M/HR-2'-Spikes of creamy-white, mauve and pink flowers with spotted throats; Early to mid flowering	\$5.99
Digitalis Panther	ps/wd/M/HR 18-24" violet rose with speckled throat	\$5.99
Echinacea Dbl CD Crl Crnberry	sun/wd-2'-large[5.5"], single, melon-yellow blooms with dark orange cones.	\$26.99
Echinacea p Cheyenne Spirit	sun/wd-26-28"; 2013 AAS ;flower colors purple, pink, red and orange tones to lighter yellows, creams and white	\$5.99
Echinacea p Green Twister[Pr Bl Vin Lime	sun/wd-2'-ragrant, fully double, pompom-style flowers up to 4.5 inches wide in magenta-pink	\$5.99
Echinacea p Magnus super	sun/wd 44", mid season blooms, intense red. 1998 plant of the year	\$5.99
Echinacea p Pow Wow White	sun/wd-20"-Pure white with golden yellow cone'3-4" across with wide overlapping,reflexed petals.Early-late	\$5.99
Echinacea Pr Bl Vinatge Lilac	sun/wd-3'-unique lime-green petals that fade to soft pink as they mature, surrounding a bold green central cone.	\$16.99

Echinacea Sombrero Adobe Org	sun/wd-20"- large, intense vibrant orange, daisy-like flowers . The long-lasting, single to semi-double.	\$26.99
Echinacea Sombrero Salsa Red	sun/wd- 20" reliable rich colors and first year blooming; attracts pollinators	\$26.99
Echinacea SS Rainbow	sun/wd- Layers of petals in a rainbow of changing color from orange to salmon to lavender pink. Attracts pollinators	\$21.99
Echinacea SS Salmon	sun/wd-20" semi double soft salmon-pink with some rays of yellow; pollinators	\$21.99
Echinops ritro 'Veitch's Blue'	sun-ps/wd- 4'-clump;blue ball shaped fls;attracted by bumblebees & nocturnal moths	\$12.99
Epimedium g Pretty in Pink'	ps-wd/avg-18"- white spurs, rose pink backs,&deeper rose centers. Heart leaves Can survive in dry shade	\$21.99
Epimedium Sulphureum	ps-wd/avg-9-12"- yellow; leaves turn reddish	\$21.99
Eremurus Ruitter Hybrids'	ps/M/wd/S 4'- towering flower spikes and vibrant spring and early summer colour of Orange, Yellow & Pinks	\$16.99
Ersimum Ery Bronze Rose	Sun/M-22"-Fragrant flowers,purple orange . upright well-branched stems; very attractive to pollinators	\$16.99
Eryngium alp Blue Star'	Sun/wd/F- 3' steel grey thistle leaves like grey blue flower heads	\$12.99
Eryngium p Blue Hobbit	Sun/wd/F- 12"- deeply toothed steel blue leaves with purplish blue flower heads	\$12.99
Erysimum Eryristible Fire	Sun/M Shades of Red Oranges Yellow's, long season bloom	\$12.99
Eupatorium Blind Date	sun/M/wd -5' domed clusters of tiny, fragrant, lavender pink flowers; choclate red foliage	\$16.99
Euphorbia myrsinites	S/wd-a succulent perennial with sprawling stems of fleshy, blue-green leaves and star-shaped flowers	
Euphorbia polychroma	sun/wd 16", early blooms, light yellow, lovely color in garden	\$12.99
Eutrochium JoJo	sun/wd-6'- more compact than other JoePye Weed, dome shaped rosy pink flowers	\$16.99
Filipendula Kahome'	sun-pd/M / wd/ avg - 12"; tiny pink fragrant flowers	\$12.99
Gailardia Arizona Apricot	sun/wd/F large 3" wide Apricot colored flowers	\$5.99
Gailardia Arizona Sun	sun/wd/F- 12"dwarf, well branched variety that thrives in dry heat. 3" Burgundy flowers with yellow tips	\$5.99
Gailardia Mesa Bi-color	sun/wd/F - 16" daisy-like flowers,bright orange-red petals, with yellow tips, surrounding a deep red center cone.	\$5.99
Gailardia Mesa Red	sun/wd/F- 12"dwarf, well branched variety that thrives in dry heat. brick red petals and a darker burgundy cone CTS	\$5.99
Gailardia Spintop Mango	sun/wd/f- 6-12" -Golden-orange flowers with yellow tips are prolific and eye-catching in the garden	\$12.99
Galium odoratum	Heavy to shady borders or as a GC or edging plant. Edible Can be somewhat aggressive under optimal growing conditions.fragrant	\$9.99
Gaultheria procumbens	PS/wd/M- a fragrant evergreen that grows best woodlands and produces red berries in winter.	\$16.99
Gaura Steffi Dark Rose	sun/wd/ 2' -an abundance of upright spikes blanketed with dark rose-pink flowers.	\$12.99
Gentian c Blue Cross	sun-ps/M but wd -8-12", trumpet shaped bright blue flowers	\$9.99
Gentian True Blue'	sun-ps/M but wd - 2' This beautiful floriferous gentian produces large 2", tubular, true blue flowers	\$21.99
Geranium Perfect Storm	Sun-ps/wd-2'-vibrant magenta flowers with black centre & veins; early to mid season	\$16.99
Geranium Rozanne	S-ps/wd-10"violet blue flowers with white centres; early to mid season	\$21.99
Geranium sanguineum	Sun-ps/wd1- 2' hardy perennial with bright crimson flowers and distinctive lobed leaves with hairy stems	\$9.99
Geum Pretti Rose	sun/M but wd-12"- fully double,bright Peach, excellent, mid season	\$26.99
Heather vulgaris	sun/wd/Ac/ 10-12" mixed selection , blooms in the summer;	\$16.99
Helenium Salsa'	sun-ps/wd/M020" red/orange petals surround a dark maroon and yellow cone; late summer bloom	\$9.99
Heliopsis Orange Marble	sun-ps/avg- 32" marbled orange/red flowers in mid-late season	\$21.99
Heliopsis Sunstruck	sun/wd/avg- 16"- False Sunflower; vibrant yellow flowers with variegated foliage; attracts bees & butterflies	\$5.99
Helleborus Tutu	shade-ps/wd/M- 12"- pink petals flushed with green and speckled with dark pink spots; V. early blooms	\$21.99
Helleborus White Tutu	shade-ps/wd/M-12- 20" It has pure white flowers speckled with deep pink spots; green ruffled centre	\$29.99
Hemerocallis Marque Moon	sun-ps/avg-1- 2'- huge blooms of creamy white trumpets; a perfect addition to any garden; mid season	
Hemerocallis Marque Moon	sun-ps/avg- 24"- large 5" creamy white blooms with gold edge;mid-late summer	\$21.99
HEMEROCALLIS - All Varieties	Daylilies look better planted in a mixed border T (tetraploid) are higher in bud count not from tissue culture	
Hemerocallis Band of Fire	sun-ps/avg-30"- right yellow petals with large red eye and massive red edge; mid season & reblooms	\$16.99
Hemerocallis Born To Run	sun-ps/avg-28"- mid season, rebloomer; Rich, rosy red flowers have a creamy yellow, incredibly ruffled picotee edge	\$19.99
Hemerocallis Pointed Perfection	sun-ps/avg-warm orange petals with pointed red eye T	\$16.99
Hemerocallis Purple D'Oro	sun-ps/avg-20"-medium sized blooms with a robust long blooming period; repeat bloomer	\$19.99
Hemerocallis Rocket City	sun-ps/avg-3'- 6" blooms of bittersweet orange tepals with a darker orange eye	\$21.99

Hemerocallis Rosy Returns	sun-ps/avg- 16", CTS, excellent display, Rose-pink, an outstanding selection	\$16.99
Hemerocallis Simon's Overture	sun-ps/avg-2'- lav -rose 6"flowers with satiny deep-plum eyes and matching ruffled edges; mid	\$16.99
Hemerocallis 'Stella D'Oro'	sun-ps/avg-12"- vigorous, fragrant and profuse blooms over a long blooming period	\$12.99
Hemerocallis Stella Supreme	sun-ps/avg-14"- a profusion citrus-scented, lemon yellow flowers that bloom twice in summer.	\$19.99
Hemerocallis Tequila & Lime	sun-ps/avg -28"-Yellow self above deep lettuce green throat.	
Heuchera Berry Smoothie	sun-ps/avg-M--8" x8"- X GC for dry shade.Purple-Silver leaves;small white bell shaped flowers	\$26.99
Heuchera Grape Expectations	PS-M- 12 x 24" -vibrant grape purple foliage and creamy white flowers; attracts pollinators	\$26.99
Heuchera m Purple Palace	Ps is best - 20" large lustrious star shaped leaves from olive green to deep purple underside metallic purple	
Heucherella Copper King	Ps- M-12"- New leaves are bright orange with copper red centers &yellow edging.Each leaf is large at 5"	\$26.99
Heucherella Sweet Tea	Ps is best & M-20" - burnt orange to apricot orange with small white flowers	\$26.99
Hibiscus Cherry Choco Latte'	sun-ps/avg/M -4' - 9" blooms, heavy bloomer; white with intense pink veins	\$39.99
Hibiscus Honeymoon™ Deep Red	sun-ps/avg/M-2' Velvet red flowers reach 6 to 8 inches wide! show-stopper; Pollinators	\$16.99
Hibiscus Midnight Marvel'	sun-ps/avg/M-4' Dark foliage with glossy red bloomsup to 9" wide! show-stopper. Pollinators	\$39.99
Hibiscus Pink Swirl	Bitmap Bitmap sun- ps/avg/M - 3' - very large blooms of delicate pink & white swirls with raspberry centre;	\$5.99
Hosta Minuteman	ps/wd/M/HR one of the most popular white margin Hosta, lavender flowers	\$26.99
Hosta White Feathers	ps/wd/M/HR- 6"x10"- As it matures, the white leaves transform into a blend of green and cream. Lavender flowers ; best in shade	\$16.99
Iberis semp Alexanders White	sun/DT-8"- large clusters of pure white flowers;reblooms in fall	\$19.99
Incarvillea delav.[Hardy Gloxinia	S-pd/avg/wd-herbaceous perennial with trumpet-shaped Pink flowers&fern-like foliage; pollinators	\$9.99
Iris e Center of Attention	sun/M-wet-3' arge purple blue with ruffled edges and purple signals	\$19.99
Iris e Dinner Plate™ 'Blueberry Pie'	sun/M/wet - 3'- dbl blooms,great for growing near water colours with regal velvety purples with strokes of violet, blue, and yellow on flowers up to 6 inches across.	\$16.99
Iris e Gold Bound	sun/M/wet- -3'-white flowers with gold veining and yellow throat	\$21.99
Iris e Pinkerton	sun-ps.M/wet-3' - soft pink flowers with dark veining & ripples edges	\$19.99
Iris g Batik	sun/M-39"- deep grape-purple blooms with white splashes & stripes	\$26.99
Iris g Cajun Rhythm'	sun/M- 30"- frilly buttery orange standards and falls with white centres; late summer but it reblooms	\$21.99
iris g Harvest of Memories'	sun/M-30"- fragrant butter yellow flowers in late spring , rebloomer	\$21.99
Iris pal Albo Variegata	sun/M- 24" - pale lavender blue flowers with yellow beards & sword like leaves of grey green; white f lowers	\$26.99
Iris pseu Variegata'	sun/M- 3-4'- bright yellow stripping on leaves;bright yellow flowers	\$12.99
Iris s Butter & Sugar	sun/M/HR- deadheading not recommended until flowering stops, bright yellow standards with whit e falls	\$9.99
Iris s Purplelicious	sun/M/HR- 3'-deadheading not recommended until flowering stops, deep purple color	\$12.99
Iris versicolor	sun/M -30"-Blue Flag clump;generally found in marshes & other wet areas, dark blue	\$12.99
Kniphofia Flamenco Mix	sun/wd/f 22", mid to late season blooms, yellow-orange, flaming red	\$5.99
Lavandula ang Essence Purple#	sun/wd/avg-14"- Deep purple flowers on tall spikes bloom right from 1st year, Gold Metal winner for it's deep color	\$21.99
Lavender a Hidcote Superior	sun/wd/avg- 20", mid season blooms. Silvery-grey leaves. Best color of all lavenders	\$19.99
Lavender a Munstead	sun/wd/avg 14" , early to late season blooms, bright lilac-blue flowers, silver-grey foliage. Dwarf	\$19.99
Lavender i Grosso	sun/wd/avg-30"- hardy lavender stands out for its unusually large, dark- purple flowers& heavy fragrance	\$9.99
Lavender i Phenomenal	sun/wd/avg- 2', fragrant,multiple lavender blooms, great in containers & a great accent plant. Bees love lavender & butterflies	\$21.99
Lavender Sensational	sun/wd/avg-2'- Impressive size and blooms Fragrant; Robust growth & appealing characteristics	\$12.99
Lavender Super Blue	sun/wd/avg-10-12" vibrant blue flowers with strong fragrance	\$12.99
Leucanthemum Make my Day	sun-ps/M -15" clean white blooms and excellent flower coverage	\$12.99
Leucanthemum s Amazing Daisies BananaCream II	sun/good drainage-2' Shasta- X- Lemon yellow flowers, very floriferous; abundant blooms that keep on giving	\$21.99
Leucanthemum s Crazy Daisy	sun/good drainage-2'-DH-spectacular floral display;early-mid summer;fantastic frilly white flowers	\$5.99
Leucanthemum s Ice Cream Drea m	sun-/good drainage- 12" -double yellow buds opens to near white pompom	\$19.99
Leucanthemum s Madonna	sun-/good drainage-10"-beautiful presence of Shasta Daisies for a sunny border . Bright white	\$5.99
Leucanthemum s Real Charmer	sun-/good drainage-large, double flowers with fringed petals in cream- yellow; blooms age well	\$12.99
Lewesia c Elise Mix	Sun/wd-6"- one of the most treasured rock garden plants. fleshy rosette of tough evergreen leaves, variety of c olors & bi-colors	\$12.99

Liatris s Flor Alba	sun/wd/M- 30" pristine white flower spikes	\$9.99
Liatris s Lavender Glwstick	sun/wd/M--2'-vivid magenta-purple flower spikes up to a foot long; a staple in cutting garden	\$16.99
Ligularia s The Rocket	sun/wd/M-4' Tall spikes of bright yellow flowers; blooms mid to late summer	\$12.99
Lily a Tiny dbl Dutch Orange	sun/poor-18"- vibrant orange double blooms with a light scent; pollen free	\$9.99
Lily AOA Viva la Vida	sun/poor-4'- the best of Asiatic & Oriental hyb. Wonderfully fragrant & v attractiveyellow, 7" blooms have a splash of red	\$9.99
Lily o Josephine'	sun/poor-4' huge light pink flowers & raspberry freckles; abundant blooming; fragrant	\$9.99
Lily o Roselily Sita	sun/poor- 4' large white petals with buttery yellow centres, fragrant & double;	\$9.99
Lily o Sunny Duty	sun/poor-18" upward facing white to light pink flowers,slightly fragrant & double	\$9.99
Limonium g Dazzle Rocks'	sun/wd-16"- profusion of flowers, blooms with a profusion of tiny violet-purple flowers A must for floral designers,	\$16.99
Lobelia Fan Scarlet	sun/wd/HR-2'; Free flowering,floriferous, hummers; scarlet blooms & near black stems	\$9.99
Lobelia cardinalis	species of bell flower; red; beautiful around damp areas and water garden edging	\$9.99
Lupin Gallery Mini Pink Bcol	Sun-Ps/M/N - 24"- lovely & showy... they will drop their seed so keep this I mind as to where you plant	\$12.99
Lupin Gallery Mini Red	sun-ps/wd- 15"- so beautiful & bright in the garden; pollinators	\$12.99
Lupine Gallery Blue bi color	Sun-Ps/M/N - 24"- lovely & showy... they will drop their seed so keep this I mind as to where you plant	\$5.99
Lupine Gallery Mix	Sun-Ps/M/N - 24"- lovely & showy... they will drop their seed so keep this I mind as to where you plant	\$5.99
Lupine Gallery Yellow	sun-ps/wd-18"- lovely & showy..will drop their seed so keep this in mind	\$5.99
Lychnis ark Orange Gnome	sun/wd/avg 12" brilliant 1 1/2 orange flowers bloom all summer; purple foliage	\$12.99
Lychnis coronaria	sun/wd/avg- 28" Rose Campion; eye catching magenta flowers with silvery foliage	\$5.99
Malva Zebrina	sun-ps/wd/S l4-5' large, red flame blossoms, up to 7",recurved tepals tipped in buttery yellow	\$9.99
Monarda Balmy™ Purple	sun-ps/wd/M/HR-12" PM resis Bright compact flowers; attract butterflies, hummers	\$12.99
Monarda Balmy™ Rose	sun-ps/wd/M/HR-12" PM resis Bright compact flowers; attract butterflies, hummers	\$12.99
Monarda B-mine Lavender	sun-ps/wd/M/HR-12" pale lavender PM resis Bright compact flowers; attract butterflies, hummers	\$12.99
Monarda B-mine Red	sun-ps/wd/M/HR-12" Red PM resis Bright compact flowers; attract butterflies, hummers	\$12.99
Monarda Jacob Cline	sun-ps/wd/M/HR-3'- heads of long tubular deep red flowers.One of the best mildew resistant varieties	\$12.99
Monarda Panorama Mix	sun-ps/wd/M/HR- 42", mid season blooms, popular bee plants	\$5.99
Monarda Panorama Red	sun-ps/wd/M/HR 42", Red mid season blooms, popular bee & hummer plants	\$5.99
Monarda Upscale Red Velvet	sun-ps/wd/M/HR 32" large cherry red flowers	\$26.99
Montauk Daisy	sun/wd-28", Nipponanthemum; fall blooming pure white fls with yellow centres.Very nice; deer & pest resistant	\$12.99
Myosotis Bellamy Blue	sun-ps/wd/HR-6-8"- clusters of sky-blue flowers bloom early in the spring.	\$5.99
Nepeta Cat's Pajamas#	sun-ps/wd-12"-ball-shaped habit carries long, dark flower stems that hold indigo blue flowers.Early blooming	\$21.99
Nepeta faas Cat's Meow#	sun-ps/wd14"-drought tolerant, deer resistant, long blooming perennial that looks great all season.	\$21.99
Nepeta faas Walkers Low	sun-ps/wd-2-3'- high performance & low maintenance variety;	\$19.99
Nepeta Purrsian Blue#	sun-ps/wd/HR -18"- compact & tidy, blooms summer into the fall, nice fragrant	\$16.99
Nipponanthemum leu. Montauk Daisy... See Montauk Daisy		
Oenothera miss Sundrops	sun-ps/wd- 10" huge yellow trumpet shaped blooms that are prostrate & ground hugging	\$9.99
Oenothera Siskiyou Pink	sun-ps/wd/M 8"-asses of large, 2", saucer-shaped, rose-pink flowers with white centres	\$12.99
Opuntia polyacantha[Prickly Pear	sun/V.V.Wd 8", mid season blooms, use high potash to bring into flower, let dry out completely in winter[prickly pear]	\$9.99
Papaver n Champagne Bubbles	sun-ps/wd/HR/M-18" usually self-seed and come back year after year;mixture of orange, yellows. white, red's	\$5.99
Papaver n Garden Gnome Mix'	sun-ps/wd/HR/M-12"- Icelandic, great performer	\$9.99
Papaver o Deluxe Mix	sun best/wd/hr This compact-growing strain features flowers in shades of white, pink, salmon and scarlet	\$5.99
Papaver o Prince of Orange	sun best/wd/HR-30"- Crepe paper-like, showy, orange-red double flowers with dark centers	\$5.99
Papaver or Beauty of Livermore	sun-ps/wd/HR-3'- large, crepe papery, cup-shaped, scarlet red flowers with a dark eye and black splotches at their	\$5.99
Papaver or Brilliant	sun best/wd/HR/ 36" provide a cheerful display of huge brilliant scarlet red satiny flowers in l.spring and e summer.	\$5.99
Papaver or Vict Louise[Fruit Punch	sun-ps/wd/HR- 6- " bold salmon round flowers with black eyes at the ends of the stems	\$5.99
Penstemon Chocolate Drop	sun/dry-MM- 2-3'- tublar flowers range from dark burgundy to black; light pink flowers. Pollinators	\$12.99
Peony Bartzella	sun/wd/M-Don't plant deep-3'- RealYellow,red splash; cross between a herbaceous peony and a tree peony	\$39.99
Peony Command Performance	sun/wd/M-30"- flowers are among the largest of all peony varieties.a near pure cardinal-red colour,	\$39.99
Peony lac Joker'	sun/wd/M- 3'- vibrant pink with pink picotee edges	\$39.99
Peony lac Red Charm'	sun/wd/M -3' features bold lightly-scented double red flowers	\$29.99

Peony Primevère	sun/wd/M-3'-plump, anemone-flowered.6-7"across! Guard petals open white.Lemon-yellow centers	\$29.99
Peony The Fawn	sun/wd/M-3'- Dk purple buds, dbl pink flowers that opens late in peony season; moderately fragrant	\$39.99
Pervoskia a Denim n Lace	sun/dry/wd- 3' lavender blue flowers; fragrant, deer resistant; fills in quickly	\$21.99
Pervoskia atriplicifolia	sun/dry/wd-15" -masses of lavender colored flowers on aromatic stems; Pervoskias love the heat	\$12.99
Pervoskia Bluesette	sun/moderate-M/wd- 2'- dark purple flowers and silvery leaves. DEER RESISTANT	\$12.99
Pervoskia Jelena	sun/dry/wd -2'- purple; exceptionally long blooming & very hardy; Always looks fresh; Attracts pollinators Exceptionally long blooming and very hardy. Grows in heat and drought, and always looks fresh	\$12.99
Phlox Garden Girls Dream Girl	sun/dry/AM-30" fragrant -eye catching, bright lavender-pinkflowers bloom for weeks; mid-late	\$21.99
Phlox Garden Girls Glamor Grl	sun/dry/AM-30" fragrant -eye catching, hot coral pink bright flowers bloom for weeks; mid-late	\$21.99
Phlox Garden Girls Uptown Grl	sun/dry/AM-30"-large, pyramidal clusters of light pink dark eye flowers,Mildew resistant; fragrant	\$21.99
Phlox p David	sun/dry/AM -up to 4'- fragrant pure white free flowering;attractive to pollinators	\$12.99
Phlox s Candy Stripes	sun/dry/ 4" - is a delightful evergreen perennial with masses of candy pink and white striped flowers which	\$9.99
Phlox s Emerald Blue	sun/dry/ 4" -Creeping Phlox masses of deep blue flowers	\$9.99
Phlox s Emerald Pink	sun/dry/ -4" - masses of starry, hot-pink flowers which blanket the dark green, needle-like foliage in mid to late spring.	\$9.99
Phlox s Snowflake	sun/dry/ 4" -masses of starry, pristine white flowers which smother the dark green, needle-like foliage	\$9.99
Phlox sub Red Wings'	sun/dry/ 4" - eye-catching evergreen perennial with masses of vibrant scarlet-red flowers,	\$9.99
Physalis alk v Franchetti	sun-ps/wd- Chinese Lantern orange lantern shaped blooms are a favourite for fall decorating..DRIED	\$5.99
Platycodon Popstar Blue	sun-ps/wd-a short dwarf balloon flower with double periwinkle-blue flowers in summer	\$5.99
Platycodon Popstar Pink	sun-ps/wd-a short dwarf balloon flower with semi-double bright pink flowers in summer	\$9.99
Polygonatum o Ruby Slipper	shade/wd/M/Hr-20" clump forming fragrant white drooping flowers with red stems	\$29.99
Potentilla t Monarch's Velvet	sun/any -18" bears clusters of single, extremely vibrant red flowers all summer	\$9.99
Primula vialli RH Poker	sun-ps/wd/M-12"- bearing upright poker-shaped, red-tipped lilac-pink flowers. Availability uncertain	\$5.99
Primula vulgaris	sun-ps/wd/M-12"-masses of pale yellow single scented flowers. Very popular. Availability uncertain	\$5.99
Primula Zebra Blue	sun-ps/wd/M-8"- large blue & white stripe with yellow heart	\$12.99
Pulsitila v Alba	sun/wd-8" -boasting large, bell-shaped, pure white flowers, up to 3" on short stems in early spring.	\$9.99
Pulsitila v Rubra	sun/wd-8" boasting large, bell-shaped, redflowers, up to 3", on short stems in early spring.	\$9.99
Pulsitila v Violet	sun/wd-8" boasting large, bell-shaped, purple-violet flowers, up to 3", on short stems in early spring.	\$9.99
Rudbeckia Autumn Colors	sun-ps/wd/M- 2' - large vibrant colors of yellow,orange,red & brown	\$5.99
Rudbeckia Gold Rush	sun-ps/wd/M-18"-vibrant golden yellow daisies	\$16.99
Rudbeckia Cherry Brandy	sun-ps/wd/M-18"- bright cherry brandy	\$9.99
Rudbeckia f Goldblitz(goldstrum)	sun-ps/wd/M-30" Large 3-4" deep golden-yellow flowers with black cones. Plants bloom midsummer into fall..easy to grow	\$12.99
Rudbeckia f Goldstrum	sun-ps/wd/M-30" Large 3-4" deep golden-yellow flowers with black cones. Plants bloom midsummer into fall..easy to grow	
Rudbeckia f Indian Summer	Sun-wd-12-30" very popular , great show of color for fall, self seeds for next years flowers	5.99-12.99
Rudbeckia h Prairie Sun	sun-ps/wd/M-2'-very large, bright orange flowers.	\$9.99
Rudbeckia Toto Gold	sun/wd/M- unique cherry to deep-red blooms that are 2-3" wide.gives impressive garden performance mid summer	\$12.99
Sagina sublata	sun/v.wd/gritty 5", mid season blooms, very small white flower, soft light green foliage, good ground cover	\$5.99
Salvia Blue by You	sun/wd/M- 2' Long, bright blue flower spikes.DH- remove spent flowers	\$12.99
Salvia n New Dimensions Blue	sun/wd/M-18"-chubby spikes of deep and intense violet-blue flowers appearing in late spring. Fragrant-pollinators	\$5.99
Salvia n Noble Knight	sun/wd/M-18"- vibrant purple spike green leaves	\$9.99
Salvia p Fshnsta Moulin Rouge	sun-wd/M- 20" this series brings large flowers. This one is a rich shade of deep pink	\$21.99
Salvia p Pink Profusion	sun-wd/M-14-16" Dark violet-pink flowers on darker pink calyxes	\$21.99
Salvia p Violet Riot	sun-wd/M-2'-unique flowering spikes of vibrant violet blue flowers, adorned with deep purple calyxes.	\$21.99
Salvia Rose Marvel	sun-wd/M - 16" upright deep rose spikes	\$12.99
Salvia Sen Dp. Rose imp	sun-wd/M -12"- vibrant purple rose, blooms all summer great bloomer; pollinators	\$12.99
Sanguisorba obtusa	sun-ps/wd but M-3'-clumping plant; small fluffy bottle-brush bright pink flowers; spreads slowly;mid season	\$12.99
Saponaria ocy Snow Tip	sun/wd 4"- loose clusters of white flowers with small green leaves; blooms in spring	\$5.99
Saponaria ocymoides	sun/wd 6", early blooms, good ground cover, cut back hard for re-bloom, excellent for walls	\$5.99

Saxifragia Mar Hot Rose	Ps/wd-6" x 6"- large vigorous flowers; a bright addition to any semi sunny border	\$16.99
Saxifragia Mar Red Picotee	Ps/wd-6" x 6"- large vigorous flowers; a bright addition to any semi sunny border	\$16.99
Scabiosa Blue Butterfly	sun/wd-18" profusion of lavender blue pincushion flowers; early season	\$9.99
Scabiosa Flutter™ Pure White'	sun/wd -15"- blooms spring-frost; pincushion pure white flowers	\$12.99
Sedum Dazzleberry	sun/dry- mat forming blue green leaves; huge flowers of raspberry rose flowers on short stems	\$12.99
Sedum Frosted Fire	sun/dry-15"-variegated sport of Autumn Fire Sedum,same brightly colored rosy flower head	\$21.99
Sedum Nova Cherry Fizz	sun/dry- 20" . Deep bronze colored foliage; enormous cherry pink flower heads,	\$26.99
Sedum Sapphire Tuffet	sun/dry- 12" dark smokey blue leaves; dark pink flowers in the fall	\$26.99
Sedum SS 'Plum Dazzled'	sun/dry- 20"- striking dark burgundy foliage and dark pink flowers in the fal	\$12.99
Sedum Thunderhead	sun/dry-2-3' gray-green foliage and deep rose flower heads	\$16.99
Sempervivum Mix	sun/wd- 4"-mixture of different varieties & colors	\$16.99
Silene d Clifford Manor	ps/sun/wd- 12-18" bright pink, showy	\$12.99
Stachy's b Furby	sun-ps/wd-16" soft silvery green foliage & unique fuzzy texture	\$5.99
Stokesia Amethyst	sun/wd-2'-2½-3" flowers are periwinkle blue extended blooming. Thrives in heat and humidity. DH	\$21.99
Stokesia Peachie's Pick	sun/wd-2'- 2½-3" vibrant lavender blue flowers; extended bloom; DH regularly	\$12.99
Thalictrum My Little Favourite'	s-ps/wd- up to 2'- purple pink flowers on robust stems. Scalloped leaves	\$21.99
Thymus p Coccineus	sun/wd/N- alk ornamental GC.a dense, flat mat of evergreen, dark green leaves that are smothered in bright m agenta-red flowers	\$16.99
Thymus psued Wolly	sun/wd/N-alk 5", early season blooms, grey-green color, soft fuzzy leaf with lavender flower	\$9.99

### Helpful Hints:

#### When to Plant Perennials...

- \* Perennial flowers are best planted in the spring or the fall, when temperatures are cooler.
- \* These seasons give them time to get settled and grow new roots.
- \* We often plant our perennials in fall when perennials are on sale and before winter arrives.
- \* Smaller perennials in 4-inch pots cost less and catch up to larger perennials within one year after planting!
- \* Container-grown perennials (a small plant already rooted in soil and growing):
- \* Dig a hole that's a little wider (but no deeper) than the container;
- \* Gently loosen the roots , add a small handful of Bonemeal & add water
- \* Put in perennial & fill in with soil, firm but not packed, Water again

## Pots & Containers

We promote only well grown & healthy plant material. We have built our reputation on our quality & are pleased to say we will continue to do so.

Errors in pricing can happen. All prices are final at checkout.

4.5" Potted Material:	\$5.99
Dracaena,Fuschia, Ivy Geraniums, Geraniums, Scaevola, Bacopa, Begonias, Verbena; Nemesia;	
Sunpatiens, New Guinea Impatiens, Million Bells, Petunias (& wave), Argyanthemum, and so much more	
6" - large potted plants, Gerbera MG; Veggie pots [JMBO]	\$8.99
6" Mina's, Cobaea & M Glories with Trellis (Hairy Legs)	\$9.99
Jumbo 5.5-Sunfinity Sunflower	\$11.99 LRGer POTS- \$17.99
Jumbo 5.5- Ornamental Annual Grass [Pennisetum], Canna. Martha	11.99
Jumbo 5.5- Mandevilla ; Diplandia	19.99
3.5" - Ever popular Wave Petunias:	3.99
Patio Tomato Tubs:-large & fruited: Fertilize 2-3 times a week with 1/2 strength water soluble fertilizer (the blue stuff) & keep plants damp, but not soggy	\$21.99
8" Hanging Baskets, assorted contents	18.99
10" Hanging Basket Boston Fern [very large & full]	29.99
10" Hanging Baskets:(very large & full of growth-large selection	22.99 or 3/65.99 = 21.99e
10" Hanging Basket Tomatoes & Strawberry	19.99
12" hanging baskets, plastic	38.99
12" Wire Baskets (filled with flowers growing in a ball)	\$47.99 - [Solenia Begonia in a Ball \$67.99

16" Wire Baskets (filled with flowers & growing in a ball)	wave pet \$-57.99 (mix \$67.99)
24" MONSTER Wave Petunia Baskets	99.99
24" Flower Pouch: very large & full of growth	19.99
8" mum pot...HUGE & GORGEOUS	\$10.99 or 3/\$29.99
perennial packs(4/pak)	\$ 5.99/ mostly 4/pak ; sngpots 4.99 /5.99( 3") pot
annual packs(most contain 6/pak)	4.19; sml pots 3.19
herb packs (contains 4 plants each pak)	4.19; sml pots 3.19- 4.99
Veggie packs(4 or 6 pak)	4.19; sml pots 3.19- 4.99
variety herb patio containers	\$9.99 - \$16.99 - \$29.99

### Helpful Hints:

We will custom fill your containers according to your requests or we will help you to decide what you like. We use new soil every year so you may empty the old soil on your compost pile & wash your pots up nice & spiffy. We will keep your containers until mid-June at no extra cost. All lay-a-ways must be picked up by mid-June or they will be recycled. Sorry please honor our policy on this. It is also very hot in the greenhouses by this time & your wonderful creations will start to deteriorate in that heat.

Helpful Hint: containers need new soil & a proper slow-release fertilizer to keep plants growing & blooming. Always use water soluble (the blue stuff) often Plants grown in containers have special needs. One of the mistakes a new gardener makes is to use topsoil from their in ground garden to pot up their plants.

There are no nutrients, airspace, & it's too dense for proper drainage & root development. It is important to use a good quality potting soil & never the cheapest

one offered by some chain stores. Never ever re-use old soil from your containers for next year's plants. Dump it in your in-ground garden or compost.

## Roses

### Key Terms:

<b>Wd</b> – Well-drained
<b>CTS</b> - Continuous
<b>W</b> - Woodland
<b>HR</b> – Humus Rich
<b>DH</b> - Deadhead

### Pricing: \$31.99

Errors in pricing can occur. All prices are final at checkout.

Angela	climber	3-5' soft pink; sweet scent; double
Bordeau	floribunda	3'-Very free flowering, double.Wine red; award winning; fragrant; repeat
Carpet Flower Coral	ground cover	40" wide, abundant blooming with bright Coral flowers over a long season
Carpet Flower Scarlet	ground cover	40" wide, abundant blooming with bright Red flowers over a long season
Carpet Flower Yellow	ground cover	40" wide, abundant blooming with bright Yellow flowers over a long season
Ch-Ching	grandiflora	4-5'-yellow abundant blooming in spring; fragrant; vigorous growth full; repeat
Coral Dawn	climber	5'- double, rosy pink; fragrant; repeat bloomer
Cosmic Clouds	shrub/climb	8-10'-rich Magenta purple with a white reverse;fruity scent
Day Breaker	floribunda	covered in stunning lightly-scented peach flowers with orange overtones and pink tips at the ends of the branches from late spring to early fall
Don Juan	climber	10'- deep Red ; fragrant, repeat
Ebbtide Purple	floribunda	3'-Heavy fragrance, deep purple roses, heavy bloomer; repeats well all summer.
Eden Climber Pretty in Pink	climber	very full, old-fashioned, globe-shaped blossoms,

Elegant Fairytale	shrub	2-4', Pink Blend; large & double; light fragrance; blooms spring & fall
Golden Opportunity	climber	8-10'- Yellow; fruity fragrance; very large blooms;
Golden Showers	climber	repeat-flowering climbing rose, large, sweetly fragrant, semi-double, golden-yellow blooms,
Honey Perfume	floribunda	4' - Apricot yellow; irresistible spicy fragrance; reblooms
J P Connell	explorer	5'-Fragrant, pale yellow double flowers begin with hybrid tea form, then open to expose the stamens. June flowering some repeat
Lady of Shallott	austin	Rich orange-red buds arranged around orange petals. outer petals are salmon-pink with golden-yellow undersides, warm Tea fragrance,
Lemon Meringue	climber	10-12'-vigorous Yellow climber with double blooms; spicy fragrance
Mt Hood	hyb T	4-6'- creamy white; blooms on New wood so must prune out old wood; very fragrant
Rosa rugosa Rubra'	shrub	large, single with magenta-purple flowers.CTS bloomer produces 3" blooms with 5 petals.
Rose Brindebella Pink Princess	shrub	4', vigorous, bushy, fragrant
Rose Brindebella Touch of Pink	shrub	4'- double shell pink with white overtones; easy care
Sonnenwelt	shrub	5'-radiant Apricot-pink' blooms profusely, moderate fragrance; repeat
Watercolors Home Run	shrub	3'- huge clusters of flowers in a rainbow of colors.soft yellow, gold, to raspberry pink fragrant
Tess of the D'urbervilles	austin/climb	4'- large bright crimson; old rose fragrance; excellent repeat

### Helpful Hints:

Use a proper Rose fertilizer for the best results and don't splash water on the leaves. Roses are heavy feeders and require a water-soluble fertilizer like PEI fish fertilizer or other water soluble every three weeks. Always make sure that the liquid goes right to the root. This is good info for any plant! Top dressing would be much better, and we recommend this as roses are heavy feeders. The proper roses food suggested is made specifically for roses and contains the necessary trace elements needed by the plant to perform well.

Floribundas/Austins are continuous bloomers. Add a handful of Epsom Salts every 2-3 weeks. Apply on the drip line.

Climbing /Rugosa/Miniature/Hedging roses blooms on old wood. If you prune in the spring, you will have no flowers that season.

Growing climbing roses requires training as they will usually grow quite wayward. Use a good sturdy trellis & ties that will degrade over the years. The plant must be tied as it grows & some pruning will be required to keep the plant in a somewhat reasonable size. A dead tree would be a perfect trellis.

Perhaps Rugosa Rose is the most popular species used for hedging. It is dense, hardy, colorful & has healthy foliage.

Hybrid T/Grandifloras/Floribundas/English roses need to be cut back to 8-12" from the ground in the very late fall/early winter (to avoid the wind shaking the roots loose). If you prune too early in the fall, they can think it is spring and start to put out new growth which of course will freeze out.

Black Spot & powdery mildew -use a fungicide-Defender is a good rose product for rose care.

Don't water the leaves and be especially careful when the sun is out. Defender is a good product for rose care.

Clay soil is usually recommended for planting because of its ability to hold water. You will have to use organic matter to make your soil more pliable. Two sources would be 'real' old fashion aged manure is the best (or store-bought would work but no cheapies) or compost, always well broken down. Peat moss is always a valuable soil conditioner. Roses must have a consistent supply of water and nutrients to grow.

## Veggies

**Pricing:** \$4.19/pack (4-6 plants per pack)

Single pots starting at \$3.19

We also carry a good selection of ready-to-go patio tomatoes (\$21.99) and other ready-to-go veggies and herbs.

Errors in pricing can happen. All prices are final at checkout.

Arugula Myway	nutty flavor used in salads..this is a real good herb & good for you also
Beans	yellow & green
Beets	Cylindrical.... Nice for slicing & pickling; the beets were popular with shopper's for transplanting
Broccoli	Waltham
B.Sprout	Jade Cross

Stay up to date with sales, news, and events by signing up for our newsletter at [villagenursery.ca](http://villagenursery.ca)  
& Follow us on [Facebook](#) & [Instagram](#)

Cabbage	Stonehead early, Multikeeper late, red, savoy, regular sized pak choi
Carrots	Orangeblaze 10" variety & Rainbow blend- the carrots were popular with shopper's for transplanting
Celeriac-	the root or knob is the edible part-generally known as the rooted celery
Celery	Tango
Cauliflower	Amazing
Corn	Delectable-bi-color
Cukes	Cucumelon-grape sized cukes crossed with watermelon. Looks exactly like miniature melon. Unique
Cukes	Slicemore(the best); Marketmore regular, English, pickling; heirloom Lemon(heirloom);Diva(lunchbox); several lunch box varieties
Eggplant	Classic
Gourds	a mixed variety
Husk cherry	Aunt Molly's golden husk cherries, excellent to eat once the husks dry...mmmm yummy
Kale	Darkibor;Dinosaur;Red Russian & Winterbor(common- salads(remove heavy veins)full of nutrients,
Lettuce	Red Sails, oakleaf, buttercrunch, green; red; leaf, head, red, romaine; mesclun mix
Onion	Leeks,red,spanish,yellow winter; bunching, Walla Walla(similar to Vidahlia)
Peas	Premiun Early...tall variety; climbing. The peas were popular with shopper's for transplanting
Pepper	Sweet- green, red, yellow, orange, purple, banana, pimento, Hot-cayenne, Chili, Habanero,Jalapeno; sweet heat
Pumpkin	Dills, Small Sugar & Howden
Radish	Early variety
Spinach	Green Beret- slow to bolt
Squash-	Summer- yellow & green zucchini & Winter varieties incl. Spaghetti
Strawberry	Compact, hardy plants produce a pleasing plethora of very sweet, conical mid-sized fruit on strong stems. Large,
Swiss Chard	red & white
Tomato	Pear-red&yellow;Cherry-tiny tim; sw 100 & Sw million; Sun Sugar; Sugar Rush;cherry patio. Indigo Blueberry. Heirloom- Amish Paste;Brandywine; Cherokee Purple;Jubilee; Mortgage Lifter; San Moranzo; Low Acid-Jubilee; Sun Sugar, Sugar Rush Sungold; Paste-Roma; Regular- Scotia; Celebrity; Beefsteak-beefsteak; Big Beef; Grape- Juliet
Turnip	Laurentian...a winter keeper
Watermelon	Sugar Baby; with a warm environment & rich soil these can easily reach 20lbs

## Vines

### Key Terms:

<b>Wd</b> – Well drained	<b>LM</b> – Leaf Mold
<b>M</b> – Moist	<b>F</b> – Fertile
<b>W</b> – Woodland	<b>MT</b> – Moisture Retentive
<b>HR</b> – Humus Rich	<b>X</b> – Excellent
<b>DH</b> – Deadhead	<b>Gc</b> – Ground Cover
<b>S</b> – Sandy	<b>N</b> – Neutral
<b>PS</b> – Part Shade*	<b>A</b> – Acid
<b>FS</b> – Full Sun	<b>^</b> - Requires winter protection
<b>P</b> – Poor	<b>Alk</b> – Alkaline

\*Part Shade: This usually means that the plant will require early morning sun opposed to noonday sun.

Errors in pricing can occur. All prices are at checkout are final.

Kiwi	Actinidia-Both male & female are required for fruit production.Twining vine/prune late winter. SUN-F/ WD soil with shelter from strong winds	\$39.99
Campsis tag	Indian Summer'-sun-ps/wd- 20-30'-ideal for attracting hummers; orange-red flowers; fragrant	29.99
Clematis	Grow in fertile, humus rich, moist well drained soil. Sun Keep roots & base	\$29.99
group 1	of plant in the shade, Top in the sun . Mulch heavy in late winter	
no pruning required		
group 2	Nelly Moser- very large bold star-shaped flowers with violet stripes	(group 2)
prune out dead wood	Jackmanii- 8' - 5" blooms are a delicious dark purple, making it one of the prettiest flowering vines.	(group 2)
bloom cut back 1/2	Rouge Cardinal- crimson red blooms	(group 3)
& plant will re-bloom	Sapphire Indigo- 3'- sapphire Indigo color	(group 3)
	Sweet Autumn- aggressive climber; white -20'-provide heavy support; prune hard; fragrant	(group 3)

Stay up to date with sales, news, and events by signing up for our newsletter at [villagenursery.ca](http://villagenursery.ca)  
 & Follow us on [Facebook](#) & [Instagram](#)

group 3	Tie Dye-large unique purple flowers marbled with pale lavender or white,	(group 3)
prune to the ground	Vancouver Blue Lion-9' fully double violet blue with white, long blooming	(group 2)
	Violetta Stargazer-15'-purple star-shaped flowers with white overtones, deep purple eyes & stripes	(group 3)
blooms on nu wood	paniculata-SEE ABOVE SWEET AUTUMN	(group 3)
	int Blue Ribbons-very large, 1¾" indigo blue flowers, up to three times larger than typical! Bush type, non vining	(group 3)
Hydrangea a	petiolaris-wd soil, part sun; sprawling deciduous vine reaching 40 plus feet. White flowers mid summer	\$36.99
Lonicera	Honeysuckle- up to 15 feet in fertile, humus rich, moist well drained soil,Sun/Ps, prune spring	
Lonicera hect	Goldflame purple to deep pink -purple buds open to sweetly fragrant yellow trumpet-like blooms	\$29.99
Lonicera jap	Halliana-sun-ps/avg well drained soil-fragrant twining pure white to pale yellow late spring to late summer	\$29.99
	Mandarin- fast growing deep orange	\$29.99
	Cobaea scandens ANNUAL V. fast growing & very large cover-up for 1 season	6.99 / 6" pot
	Mina lobata- vigorous growing ANNUAL vine that blooms all summer in orange yellow & white	\$6.99 / 6"pot
Parthenocissus	qu Virginia Creeper-Its root-like tendrils attach themselves to any non- smooth surface, even brick, also a ground cover.	\$41.99
Vinca	Bowles -very fast growing,leaves green ,blooms with a violet flower; does well in a shady area	\$9.99
Wisteria	Blooms in early Spring. Plant in fertile, moist but well-drained soil.Sun/Ps..12-20" long flowers	
	Blue Moon-30'-one of the hardiest; highly tolerant to cold and features stunning chains of lavender flowers	29.99

## Water Plants

### Key Terms:

#1 – Hardy, shallow water (2-4") or consistently wet
#2 – Tropical, shallow water (2-4") or consistently wet: submerged
#3 – Water Lilies: plant 3-4' deep
#4 – Floating
#5 – Submerged oxygenators: act as natural filters

Errors in pricing can occur. All prices are final at checkout.

Caltha paultris Plena	#1 -much loved for their showy yellow buttercups that grace streamsides and other wet places in early spring	\$ 9.99
Iris ensata(Japanese)	#1- many lovely colors to choose from and an excellent choice for water gardens	See perennial
Iris pseu Variegata'	#1-sun/M- 3-4'- bright yellow stripping on leaves;bright yellow flowers	\$12.99
Iris versicolor	sun/M -30" Blue Flag clump;generally found in marshes & other wet areas, dark blue	\$12.99
Iris siberican	#1- many lovely colors to choose from and an excellent choice for along borders of water gardens	See perennial
Juncus Twisted Arrows	#1- Sun-Ps corkscrew-like green foliage, interesting 18-24"	\$5.99
Lobelia cardinalis	#1-species of bell flower; red; beautiful around damp areas and water garden edging	\$ 9.99
Lysmachia( creeping Jenny)	#1- bright green wavy leaves, aggressive ground cover.	\$5.99
Pennisetum's	#4-3 sizes.King,Medium & Prince- starburst heads;X background for other watergarden plants (NOT HARDY)	\$ 11.99
Water Hyacinth	#4- lrg thick leaves with lavender fls,very nice, use proper fertilizer	\$ 9.99
Water Lettuce	#4- grows floating on the surface water, and its leaves form a rosette, with dense, submerged roots beneath it.	\$ 9.99
Water Lily Charles de Meurville	#3- free-flowering, hardy waterlily producing an abundance of large red-pink blooms with bright orange stamens	\$ 31.99
Water Lily Marliac	#3-Very clear white flower that tends to stay open longer than most. The flower size is 4 - 6" in diameter.	\$ 31.99
Water Lily Pink Sensation	#3-beautiful & the best bright rosy pink, 4" flowers from spring into fall; very fragrant	\$ 31.99