

# VILLAGE NURSERY

2025

*The  
Glory of  
Gardening  
starts  
with us!*

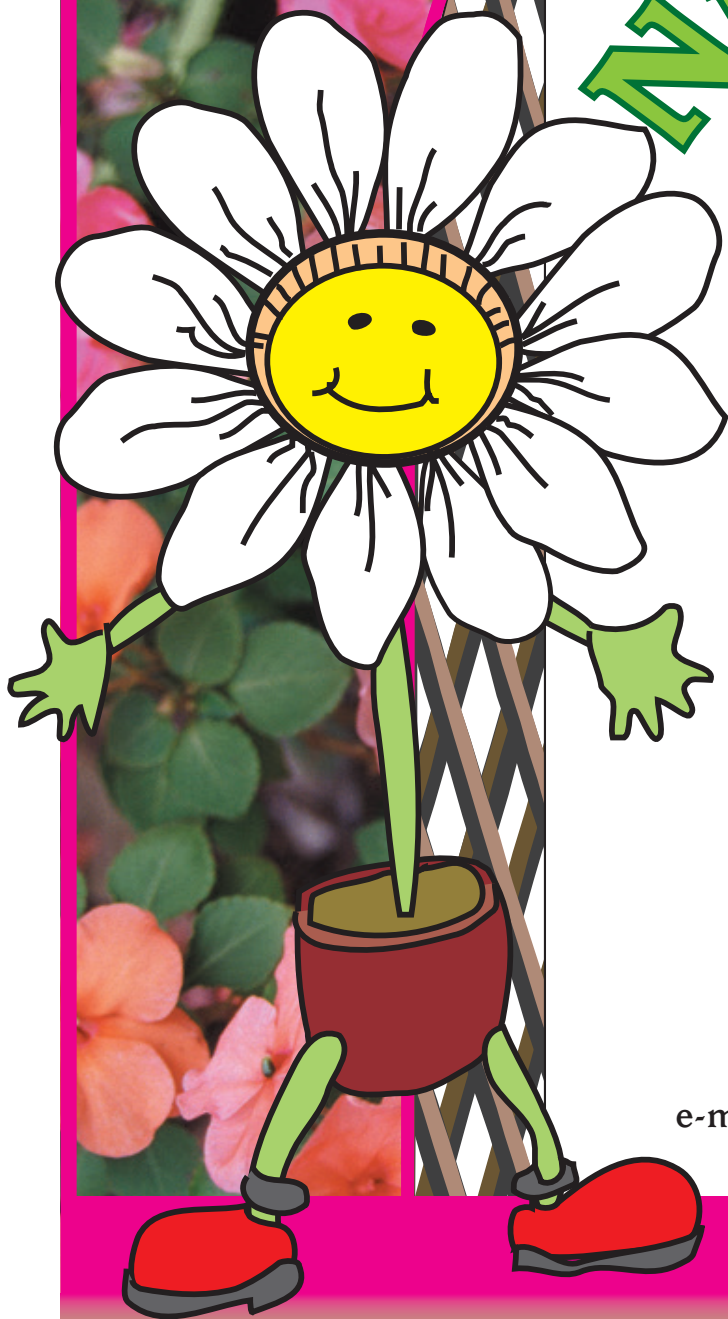
**PLEASANTVILLE**

2 KM ON LAKE CENTRE RD.  
ROUTE 331 SOUTH

e-mail: [dazee@villagenursery.ca](mailto:dazee@villagenursery.ca)


**902-543-5649**

Visit [villagenursery.ca](http://villagenursery.ca)  
*... where Quality Grows*



# A Letter from Albina

We're back...ready to go with LOTS of fresh air & sunshine...YES!

 The sun always shines at the Village Nursery!

As always, we are here to meet your gardening needs with the “hottest” houses full of so many happy, healthy, and blooming flowers! We were blessed with a very mild winter but there is still the promise of sunnier days at the “**Village Nursery, Where Quality Grows**”.

We have a nice selection again this year of our large Bosten Ferns along with a small assortment of houseplants – much, much more!

### 47 years & still going strong!

2024 was another good year at the Village Nursery, and for that we say, “Thanks” – it’s all about you! As always, we look forward to your return and hope you continue to bring your family and friends. Our #1 goal is to do better than before and to present to you an environment in which you and your friends will enjoy.

Drop in and enjoy the lush atmosphere! I wish you another successful year of gardening, good health, and joy in general...

## Albina

### Hours:

**April 7<sup>th</sup> – May 7<sup>th</sup>** open every day **8am - 5pm**

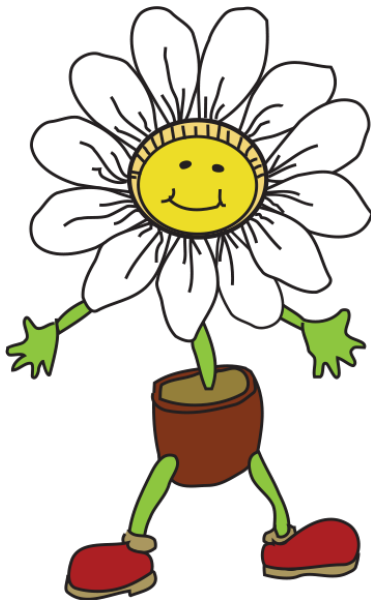
**May 8<sup>th</sup> – June 30<sup>th</sup>** open every day **8am - 6pm**

**July 1<sup>st</sup> – September 30<sup>th</sup>** open every day **8am - 5pm**

**\*We will be closed for the season on September 30<sup>th</sup>.**

### Getting Here:

From Halifax, take exit 12 off Hwy #103. Turn left onto North St. to the 5th light. Turn right, go down the hill, cross the bridge then turn left heading down 331 south (this is the main street of Bridgewater). Go approx. 8km along the "river road"- the river on the left. Watch for our Dazee logo!



Christmas 2025? How about a Village Nursery gift certificate? Give us a call at 902-543-5649!

### Contents

- Annuals.....2
- Broadleaf Evergreens .....3
- Deciduous Shrubs .....4
- Evergreens .....7
- Fruit .....7
- Grasses & Ferns .....8
- Herbs.....9
- Perennials .....11
- Pots & Containers .....19
- Roses.....20
- Trees.....21
- Veggies .....22
- Vines.....23
- Water Plants.....24

# Annuals

## Key Terms:

<b>Wd</b> – Well drained	<b>LM</b> – Leaf Mold
<b>M</b> – Moist	<b>F</b> – Fertile
<b>W</b> – Woodland	<b>MT</b> – Moisture Retentive
<b>HR</b> – Humus Rich	<b>X</b> – Excellent
<b>DH</b> – Deadhead	<b>Gc</b> – Ground Cover
<b>S</b> – Sandy	<b>N</b> – Neutral
<b>PS</b> – Part Shade*	<b>A</b> – Acid
<b>P</b> – Poor	<b>Alk</b> – Alkaline

\*Part Shade: This usually means that the plant will require early morning sun opposed to noonday sun.



All heights are listed in cm.

**Pricing:** Nearly all packs contain 6 plants at \$4.09/pack. Errors in pricing can occur, all prices are final at checkout.

Species / Variety	Series	Additional Information
Ageratum	Kona	Sun-avg- 5-8" medium blue
Alyssum	different colors	Ps-avg- 4" nice for borders,trim back if it goes to seed
Amaranthus	Velvet Curtains	Sun-36"- Intense dark crimson flowers over burgundy foliage POTS \$5.99
Aster	different varieties	Sun-avg- 12-36", several different varieties, excellent for fall bloom
Begonias	Wax	Sun/Ps-avg- 6" , red,white,coral,bi-color or pink flowers. Green or bronze leaves
Celosia	different varieties	Sun-wd- 6-30" long lasting blooms, good dried, you'll be happy to have this in your garden
Cobaea	cup & saucer vine	sun-avg- 20', planted around our perennial log house every year, V.V. POPULAR- pots \$9.99
Coleus	different varieties	Ps-wd- 12", colorful foliage, excellent shade plant
Cosmos	different varieties	Sun-wd- 28-36" compact, semi-double blooms, very showy
Dahlia	mix, individual & pot varieties	Sun-avg- 12", mix colors, semi-double 2 1/2" blooms
Dianthus	Assorted Mix	10" fantastic summer blooms... very hardy mixture of colors
D'Miller	Silver Dust	Sun-wd- 8" silver-grey foliage, it may last in the garden, as is, several years
Dried	small assort.	sun-avg, statice, Chinese lantern, silver dollar, PUMPKIN on a STIK plus others
Gazania	different mixes	Sun-wd-8" flowers close at night, great for hot dry area...sold in 4/paks
Gypsophila	Gypsy Rose	Sun-avg- 8" small double light pink flowers, great filler & in beds
Heliotrope	Marine	Sun-wd- 24" purple, vanilla scented, attracts bees
Impatiene	many colors	the perfect bedding plant for shady & semi sun....self cleaning...prfect & colorful
Lavatera	rose	Sun-wd- 28" 4" flowers with waxy sheen, gorgeous
Lobelia	Upright & trailing	Ps-wd , blues, white, red, upright & trailing & mixes
M. Glory	mix,blue/red	Sun-M- 12', sold in large & large caged pots- heavenly blue the most popular \$9.99- \$26.99
Marigold	many varieties & colors	Sun-avg ,8-20" different shades & heights of yellows, oranges, reds, mixes & bi-colors
Marigold	Lulu/L.Giant	Ps-wd- 18" very colorful, fills in nice, makes a great super fantastic fall display of colors
Melampodium	Jackpot Gold	Sun-12"- Excellent in Hot & Humid climates. Self cleaning
Nasturium	various colors	Sun-dry- 12" ,good old fashioned Nasturiums,good for poor soil; Grandma's favourite
Nemophilia	Baby Blue Eyes	Sun-Ps 12" lovely filler plant
Nictoiana	Mix	sun-Ps 24" lovely colors nice border plant
Pansy/Viola	faces & plain & frost hardy	Sun/Ps-wd- 6" beautiful happy faces
Petunia	DbL, single, wave	Sun-avg- 10", many varieties color & habit. Waves 1/POT- \$3.99
Portulaca	different colors	Sun-wd- 6", moss rose, gorgeous blooms
Rudbeckia	Indian Summer	Sun-wd- 12-30" very popular , great show of color for fall, self seeds for next years flws
Salvia	Assorted/farinacea	Sun/Ps-wd- 12-30" red, white,burgundy, bi-color & mix
Snaps	Assorted	Sun/Ps-avg-12"-3" , individual & mixed colors
Spanish Daisy	profusion	Sun/Ps-avg- 8",prostrate branches with delicate white daisy's, great filler...popular
Stocks	Mix	Sun/Ps-wd-12" , highly recommended for bedding plants
Sunflower	different colors & heights	Sun-avg-1-6', makes a great fall show of color
Sw Pea	Mix	Sun-HR-6", 6-7" large blooms per stem Sold in 6" pots with trellis \$9.99
Thunbergia	Blk Eyed Susan Vine	Sun-wd-vine-great for hanging baskets & containers, mixed colors - sold in 4/paks
Torenia	Wishbone Flower	Sun/Ps-wd-8" , looks like a miniature pansy
Verbena	Assorted incl BONARIENSIS	Sun-wd- 10", very pretty, mixed , Bonariensis(20") lilac color- a must! (4/pk) -self seeding for next year
Zinnia	different varieties	Sun-wd-1-30", zinnias like it very HOT, dry & sunny

**Helpful Hints:**

Deadhead spent blooms for a cleaner look & to keep new blooms arriving.  
Amend the garden soil for extra rewards!

## Broadleaf Evergreens

**Key Terms:**

<b>Wd</b> – Well drained	<b>LM</b> – Leaf Mold
<b>M</b> – Moist	<b>F</b> – Fertile
<b>W</b> – Woodland	<b>MT</b> – Moisture Retentive
<b>HR</b> – Humus Rich	<b>X</b> – Excellent
<b>DH</b> – Deadhead	<b>Gc</b> – Ground Cover
<b>S</b> – Sandy	<b>N</b> – Neutral
<b>PS</b> – Part Shade*	<b>A</b> – Acid
<b>FS</b> – Full Sun	<b>^</b> - Requires winter protection
<b>P</b> – Poor	<b>Alk</b> – Alkaline

\*Part Shade: This usually means that the plant will require early morning sun opposed to noontday sun.

**ARBC** – Add small rocks over top of roots before covering to keep plants from flopping over.

Sizes are listed as the size at maturity.

Errors in pricing can occur, all prices are final at checkout.

Species/Variety	Culture Garden Use	Price
Andromeda p Blue Ice	A/wd-Nice Blue foliage& clusters of pink flowers in the spring	\$29.99
Buxus Green Gem	Ps/Wd/F/sun may cause scorch- 3'- a superior hybrid Boxwood selection that grows into a cute, neat, tidy, uniform little ball	\$39.99
Buxus Green Mountain	Ps/Wd/F/sun may cause scorch 5' vigorous,natural cone shaped, bright green color all season & winter	\$39.99
Buxus Green Velvet	Ps/Wd/F/sun may cause scorch-4 x 4'- protect from strong wind; grows slow	\$39.99
Euonymus f Gold Splash	F sun-ps/wd/-2' x 2'wide-bright golden yellow and green variegated foliage [Wintercreeper]	\$49.99
Ilex com Blue Prince/Princess	Sun-ps/M-6'x5'w- M&F in one pot to grow as a single plant..DO NOT SEPARATE	\$61.99
Ilex m Blue Prince	Sun-ps/M-15'- an excellent pollenizer for female Hollies..Very hardy	\$51.99
Ilex m Princess	Sun-ps/M-15' showy bright red berries... good companion to Blue Prince or any variety male Holly	\$51.99
Pieris Mountain Fire	sun-ps/M/V WD/HR/A/prune & fertilize immediately after flwr-5 x 5'; vivid red and green foliage and white flowers. This plant is hardy, low-maintenanc	\$36.99
Rhodo Roseum Pink	noon shde/A/M/wd/prun & fert after flowering-5 x 5'-a spring display of blossoms that are a pretty rose-pink . Dark green leaves	\$59.99
Rhodo Percy Wiseman	noon shde/A/M/wd/prun & fert after flowering-6 x 6'- rounded trusses of pink-flushed, cream flowers fading to creamy-white from mid-spring	\$59.99
Rhodo Nova Zembla	noon shde/A/M/wd/prun & fert after flowering-6x5'w- vigorous, brilliant red flowers	\$61.99
Rhodo PJM	noon shde/A/M/wd/prun & fert after flowering-5 x 5' -showy purple-pink flowers in spring and a compact upright habit	\$69.99
Rhodo Roseum Elegans	noon shde/A/M/wd/prun & fert after flowering- 8 x 8'-Vogorous; large clusters of rosy lavender bloom late spring early summer	\$59.99
Rhodo Polarnacht	noon shde/A/M/wd/prun & fert after flowering- 3 x 6'w- dark almost-black buds open to deep purple-black flowers with a dark red blotch	\$59.99

**Helpful Hints:**

Some of these plants require **burlap protection** in the winter.

Always use proper Broadleaf food and only early in the season.

**Rhodo/Azalea:** Do not use any miticides- never water over the top of leaves; Fertilize with proper Rhodo food, NOT Aluminun Sulphate. Fertilize in the spring and after flowering in July.

**Leaf chewing Beetles:** Use Diatomaceous Earth or Horticultural Oil; mulch to provide sufficient moisture.

**Leaves turn black and stem starts getting black:** Botrytis, usually caused by roots not taking up water each time you water it makes the problem worse. Usually caused by really wet winters & then a period of really hot weather. Cut back beyond the black. Supply good air circulation & practice good sanitation...deadhead decaying flowers.

**Holly:**

- Female hollies have a 'bump in the middle of the flower-male hollies have an indent in the middle of the flower.
- For the best results use proper fertilizer for Hollies.
- One male Holly will fertilize 5-6 females if stems are not black.
- Give 2 feedings [no more] of All Purpose Miracle Gro This is good advice for all dead-looking trees/shrubs.

Every 3 years the hollies will shed the older leaves. If, for whatever reason hollies completely de-foliate, they will usually return. Using proper fertilizer is important to the nutrient supply for the plant. Usually sold in small size packages, Aluminum Sulphate is NOT a fertilizer, it is for acidifying the soil.

## Deciduous Shrubs

**Key Terms:**

<b>DT</b> – Drought tolerant	<b>SD</b> – Sharply Drained
<b>Wd</b> – Well drained	<b>LM</b> – Leaf Mold
<b>M</b> – Moist	<b>F</b> – Fertile
<b>W</b> – Woodland	<b>MT</b> – Moisture Retentive
<b>HR</b> – Humus Rich	<b>X</b> – Excellent
<b>DH</b> – Deadhead	<b>Gc</b> – Ground Cover
<b>S</b> – Sandy	<b>N</b> – Neutral
<b>PS</b> – Part Shade*	<b>A</b> – Acid
<b>FS</b> – Full Sun	<b>^</b> - Requires winter protection
<b>P</b> – Poor	<b>Alk</b> – Alkaline
<b>MM</b> - Medium	<b>VV</b> – Very Very
<b>D</b> - Dry	<b>AM</b> – Air Movement

\*Part Shade: This usually means that the plant will require early morning sun opposed to noonday sun.

**ARBC** – Add small rocks over top of roots before covering to keep plants from flopping over.

Sizes refers to the size at maturity.

Errors in pricing can occur. All prices are final at checkout.

Variety	Culture	Price
Amelanchier a Saskatoon	S-Ps/M/W-up to 20'; Serviceberry, White -he ripe fruit is a small berry-like pome; dark, reddish purple to nearly black.	\$ 39.99
Amur River Privet	sun/Wd-dense growing hedging, upright olive green foliage, wht insignificant flowers, trim 2-3 times a year \$15.99 or	10/13.99
Aronia m Autumn Magic	Sun/wd, any soil-3' x 4' Edible, not sweet, year round interest	\$ 41.99
Artemesia Old Man	sun/wd-3'-an erect sub-shrub with very finely divided, pleasantly aromatic grey-green leaves,	19.99 /2g
Azalea Golden Lights	sun-ps/hr/A/wd--3'- Covered in golden-yellow blooms in spring. An excellent spring display of color	\$ 69.99
Azalea Mandarin Lights	sun-ps/hr/A/wd--3'- Covered in rich orange blooms in spring. Probably the most striking flowering shrubs	\$ 69.99
Azalea Northern Hi-Lights	sun-ps/hr/wd/A-3' stunning clusters of lightly-scented pink trumpet-shaped flowers with rose overtones at the ends of the branches	\$ 69.99
Azalea Rosy Lights	sun-ps/hr/A/wd-. Prolific bloomer of deep dark rosy pink blooms	\$ 69.99
Berberis t Rose Glow	sun /avg/wd/prn aft flwr - 5' x 4'w, small, deciduous shrub with an eye-catching foliage of deep rose-red leaves mottled with pink and white	\$ 49.99
Berberis t Royal Burgundy	sun /avg/wd/prn aft flwr- 2' x 3'-will not self seed; small leaves are purple-red color all season; pale yellow flowers	\$ 49.99

Buddlei Miss Molly	Sun/wd/ protect from winter wind 5 x5' fragrant flowers are the closest to red & appear for months every summer & no DH	\$ 51.99
Buddlei Pugsters Blue	Sun/wd/WP Large, fragrant, blue flower on a tidy, compact plant. CTS r color well into fall. A prolific bloomer ...Butterflies	\$ 41.99
Chaenomeles rubra	sun-ps/wd-avg4 x 4'w-early; clusters of deep crimson flowers; Quince Small fragrant greenish yellow fruit in the fall	59.99 /3g
Cornus kousa Satomi	sun-ps/wd/mod M-25'- 4 pointed petal flowers are white ; extremely attractive; Red berries follow flowers	\$199.99
Cornus kousa Venus	sun-ps/wd/mod M- 20'-has large creamy-white bracts that bloom in late spring or early summer;X drought tolerance	\$199.99
Cornus s Artic Fire	sun-ps/wd/mod M-5', prune hard in spring; fast growing, fall berries, brilliant red colored stems	\$ 51.99
Cornus s Red Osier	sun-ps/wd/mod M-8' prune hard in spring; fast growing, fall berries, brilliant red colored stems	
Cotinus Royal Purple Smokebush	sun-ps/A/prune in spring-10', foliage dark purple,pink flowers looks like smoke-this is the best "smoke" variety	\$ 51.99
Cotinus Winecraft Gold	sun-ps/A/prune in spring- 5'-waxy leaves emerge orange maturing to a cheerful chartreuse	\$ 49.99
Cotoneaster a Peking	sun-ps/A/prune in spring-5-7'; useful as a hedge; small pink 'appleblossum' flowers; small black berries in fall; beneficials	\$ 49.99
Diervilla r Kodiak Orange	sun-ps/avy soil-4 x 4'-This shrub pushes fall color to the limits with its glowing orange fall foliage	\$ 51.99
Euonymus compactus	sun/wd-6' VV hardy; green in summer turning brilliant fire-red fall color is also displayed earlier than others.	\$ 41.99
Exordia Lotus Moon	Sun-ps-6'h x 4'w-spring blooming with long strings of white flowers resembling strings of Pearls	51.99 /2g
Forsythia Northern Gold	Sun/wd-6' prune right after flowering. If you don't prune it will go wild & stop blooming, eventually	\$ 51.99
Forsythia Show Off	sun-wd- 6', compact, blooms up the whole stem; prune immediately after flowering	\$ 59.99
Hibiscus s Aphrodite	sun/HR/wd/neut-alk-8'-Large single crisp clean white flowers appear in late summer	\$ 61.99
Hibiscus s Collie Mullens	sun/HR/wd/8'-blooms beautiful double, light purple blossoms on branches with bright green toothy foliage. Blooms are typically 4-6"	\$ 61.99
Hibiscus s Helene	sun/HR/wd/neut-alk-8'-White, heavily ruffled flowers with reddish purple eyes ; Dense, more compact than others	\$ 61.99
Hibiscus s Lucy	sun/HR/wd/neut-alk-8'-bright reddish-pink flowers over a long period, usually from early summer into mid-fall. Slow growth rate	\$ 61.99
Hydrangea a Annabelle	sun/HR/wd/8' stunning white flowers over 10" in diameter;blooms every year even after harsh pruning	\$ 51.99
Hydrangea a Incrediball	sun/HR/wd/ 5 x 5' strong stems of white flowers rounded that do not flop over	\$ 61.99
Hydrangea Invisibly Wee White	sun-ps/M/HR / prune early spring -3 x3' blooms on NEW wood enormous white flower heads in summer	
Hydrangea Limelight Prince	sun-ps/M/HR /prune early spring-6' blooms on NEW wood, Panicle Hydrangea	\$ 61.99
Hydrangea m Eclipse	sun-ps/M/HR / 4' - deep dark purple, almost black, foliage with bright red & pink flowers with white centres	\$ 61.99
Hydrangea m ES Bloomstruck	sun-ps/M/HR / 4' x 5'wide large Blue flowers DO Not add Lime if you want Blue flowers	\$ 61.99
Hydrangea m ES Summer Crush	sun-ps/M/HR /prune e spring/blooms old & NU wood-3'-Huge blooms repeats;blooms old & nu wood; raspberry-red-	\$ 61.99
Hydrangea m ES the Original	sun-ps/M /HR/prune early spring/blooms OLD & NEW wood- 6' Very large flowers for Blue flowers DO NOT add Lime	\$ 61.99
Hydrangea p Moonrock	sun-ps/M/HR /prune & fertilize early spring 6- White panicles of flowers on sturdy stems	\$ 61.99
Hydrangea p Vanilla Strawberry	sun-ps/M/HR -6'-white panicles turn to raspberry pink over the summer; a real SHOW STOPPER	\$ 61.99
Hydrangea s Tiny Tuff Stuff	sun-ps/M/HR -delicate lace capped flowers of bright pink or deep purple blue depending on soil pH	\$ 61.99
Hydrangea s TS AH HA Mountain	sun-ps/M/HR /prune & fertilize e sprig 3 x3'- reblooming Lacecap bright pink or purple depending on soil;add Lime for Pink	\$ 61.99
Kolkwitzia amabilis	Sun/wd/m-8'-Beautybush-multi stemmed stunning pink trumpet-shaped flowers with yellow throats along the branches in late spring. .	\$ 51.99
Magnolia [Girls] Ricki	Sun-ps/Wd/M-20' -cup shaped petals,reddish-purple color..slow growing & very floriferous fragrant	\$199.99
Magnolia Galaxy	Sun-ps/Wd/ 35'- stunning, large, deep reddish purple flowers that bloom late in the season on otherwise bare stem	\$199.99
Magnolia stella Royal Star	Sun-ps/Wd/M-15'-slow growing slightly fragrant 3-4" star-shaped WHITE flowers; flowers open before leaves	\$149.99
Philedalpus Min Snowflake	sun-Ps/wd- 3 x 3' showy double fragrant white flowers; profuse spring blooming	\$ 51.99
Philedalpus Snowbelle	sun-Ps/wd-5 x5' dark green leaves &sprays of double, white, very fragrant, bowl-shaped blooms 6cm across in E summer	\$ 36.99
Potentilla f Abbotswood	sun/wd-3 x 3'- masses of large white flowers blooming June to September	\$ 39.99
Potentilla Bella Sol	Sun/Wd/M-prune hard after flowering 3 x 3'- Sunset orange blooms from the top to bottom;	\$ 41.99
Potentilla f Goldstar	sun/wd-Prune old wood early in spring. 3' Golden yellow flowers; Prolific bloomer over a long season from summer to fall.	\$ 29.99
Potentilla f Red Robin	sun/wd-Prune out old wood in early spring 3' x 3'-Bright Red, blooms spring to frost	\$ 29.99
Prunus cistina Purpleleaf Sandcherry	Sun/wd-up to 10'; can be a small tree. reddish purple foliage that retains good color throughout the summer.	\$ 51.99
Rubus o Flowering Raspberry	sun-ps/wd- 6'h x 6-12'w good for erosion colorful purple flowering & foliage orange in the Fall Maple shaped leaves	\$ 39.99
Salix discolor	SUN/M/10'- grey leaves, grey under sides...pussy willow's emerge before the leaves	19.99 /1g
Salix int Hakuro Nishiki	Sun/M-12' pink stems with pink & white foliage; color will stay better if pruned back regularly	\$ 49.99

Sambucus Elder Black Lace	sun-ps/wd- burgundy colored foliage on this upright shrub Softly cut edges Bright pink flowers,blackish red berries	\$ 69.99
Sambucus Lemony Yellow Lace	sun-ps/wd-5'-white spring flowers; finely dissected foliage in a cheery gold color; lemon color into Fall; Deer resist;	56.99 /2g
Spirea arguta Bridal Wreath	sun-ps/M/wd-8'- Prune every year after flwrng arching branches that give the plant a form reminiscent of a fountain	\$ 29.99
Spirea Dbl Play Blue Kazoo	S-PS/wd- 3 x 3' foliage changes color from pinks to green through the summer with large clusters of large white flowers	\$ 49.99
Spirea DP Big Bang	sun-ps/M/wd/ prune immediately after flowering 3 x 3'- glowing orange to yellow leaves with pink flowers	\$ 49.99
Spirea Graciosa garland	sun-ps/M/wd/ prune immediately after flowering-3.5'- clusters of white flowers along the arching branches;vase shaped; Garland Flower	29.99 /1g
Spirea j Anthony Waterer	S-PS/wd- 3 x 4' willowy, reddish-purple leaves in spring turns reddish in the fall, domed flowers of pink sprays	\$ 29.99
Spirea Little Princess	sun-ps/M/wd-3' Dainty clusters of rose pink blooms create a pleasing contrast with the low-growing, mint green foliage	\$ 39.99
Symphoricarpus Albus	sun-ps/wd 3-6' huge ornamental large white waxy berries	\$ 49.99
Syringa Beauty of Moscow	Sun/Hr/wd/Lime/prune immediately after flowering.The large, gorgeous, white double flowers with a tinge of pink ..	\$ 69.99
Syringa Bloomerang Ballet	Sun/Hr/wd/Lime/prune immediately after flowering small reblooming frilly pink	\$ 51.99
Syringa Bloomerang dark Purple	Sun/Hr/Wd/Lime/ prune immed after flwrng; reblooming heavily in spring with another bloom late summer	\$ 51.99
Syringa p Donald Wyman	Sun/Hr/wd/Lime/prune imm after flowering.-8' upright, Considered by many to be the finest lilac, lightly fragrant pinkish-purple flowers	\$ 51.99
Syringa vulgaris	Sun/Hr/wd/Lime/prune immediately after flowering-8'- Common Lilac fragrant, single,lilac-purple flowers in late spring.	\$ 69.99
Viburnum c Spice Island	sun-ps/wd/prune aftr flwr- up to 12' delightly fragrant, pink buds open to white snowball-like clusters	\$ 51.99
Viburnum c Sugar & Spice	sun-ps/wd/prune after flowering-6'- Clusters of pink buds open highly scented spicy-sweets smelling white flowers in spring	\$ 46.99
Viburnum o Roseum [E Cranberry	sun-ps/wd/prune aft flwr 12'-rounded habit, with a profusion of large rounded clusters, 3 in. , white flowers in late spring.	\$ 51.99
Weigela Electric Love	Full sun/M/F/prune after flowering-2 x 3' vibrant red blooms against deep green, nearly bronze leaves.	\$ 41.99
Weigela f Polka	Full sun/M/F/prune after flowering-6'- rose pink flowers bloom profusely in spring, with a sparse repeat bloom	\$ 29.99
Weigela f Red Prince	sun-ps/wd/M/prune after flowering- 6' bright red tublar shaped flowers in early summer & sometimes reblooms	\$ 29.99
Weigela f Sonic Boom Pure Pink	sun-ps/wd/prune after flowering-4' strongest bloomer of any Weigela;Loads of Hot Pink blooms in May & later on until frost	\$ 51.99
Weigela f Vampire	sun-ps/wd/M/prune after flowering-3 x 3' Buds are deep velvety Red that opens to vivid Red;	\$ 29.99
Weigela Strobe	sun-ps/wd/M/prune after flowering-3 x 3"-from spring -autumn, bright pink flowers against green & bronze,then orange, then crimson red foliage.	56.99 /2g

### Helpful Hints:

No pruning or fertilizer (compost is fertilizer too) to trees or shrubs after August 1<sup>st</sup> as it promotes new growth which will freeze off in the winter resulting in winter kill of the plant. Water heavily until freeze, especially on newly planted material or in a year suffering from drought.

When planting trees/shrubs it is best to not use any fertilizer in the hole, except Bonemeal, which should be worked in with the soil & peat moss, & humus should be worked well into the soil, around the roots, as well. Allow lots of room in the hole for the roots to spread out. If the root is pot bound, make several long slashes from top to bottom of the root allowing the roots to escape.

Water the hole well. It is very important to have the water in the hole where the roots are trying to get established. Cover the roots with the soil you removed from the hole & tap lightly working around the root ball & fill the hole with soil. Create a 'basin' effect to catch the water. Water well once a week even in the rain.

### Commonly Asked Questions:

**Q:** I had several small blooms on my hydrangeas last year, so this year I have fertilized every 10 days until I saw blooms starting to develop. What else should I be doing to get big blooms?

**A:** The first rule of thumb is to NOT over-fertilize your plants. We suggest one application of granular fertilizer in spring or early summer, and then follow package instructions afterwards. If you over-fertilize, it can burn the root system of your hydrangeas and actually inhibit bloom production.

**Q:** I pruned my hydrangeas back after an early frost and now I am not seeing blooms. Why is that?

**A:** How to prune hydrangeas is a great question. If you prune your hydrangeas back to the base, that is where your new blooms will grow from! It will take some time for the new growth to develop and produce blooms. Be patient and look for the green growth coming up from the base of the plants.

#### Blooming Guide for Hydrangeas:

**Hydrangea arborescens:** Blooms on new wood, prune in late winter or early spring.

**Hydrangea macrophylla:** Blooms on old wood, do not prune. Remove only spent flowers and dead, damaged or unsightly wood.

**Hydrangea paniculata:** Blooms on new wood, prune in late winter or early spring.

**Hydrangea quercifolia:** Blooms on old wood, do not prune. Remove only spent flowers and dead, damaged or unsightly wood.

**Hydrangea serrata:** Blooms on old wood, do not prune.

## Evergreens

#### Key Terms:

<b>Wd</b> – Well drained	<b>LM</b> – Leaf Mold
<b>M</b> – Moist	<b>F</b> – Fertile
<b>W</b> – Woodland	<b>MT</b> – Moisture Retentive
<b>HR</b> – Humus Rich	<b>X</b> – Excellent
<b>DH</b> – Deadhead	<b>Gc</b> – Ground Cover
<b>S</b> – Sandy	<b>N</b> – Neutral
<b>PS</b> – Part Shade*	<b>A</b> – Acid
<b>FS</b> – Full Sun	<b>^</b> - Requires winter protection
<b>P</b> – Poor	<b>Alk</b> – Alkaline
<b>MM</b> - Medium	<b>VV</b> – Very Very

\*Part Shade: This usually means that the plant will require early morning sun opposed to noonday sun.

Errors in pricing can occur. All prices are at checkout are final.

Size mentioned is the size at maturity.

Species	Culture	Price
Chamaecyparis n Pendula	sun/wdPs /slightly A-33'x10'w,X specimen tree,Pyramidal;pendulous tips Flat sprays with tip upward	199.99 /7g
Juniper h Blue Rug Wiltoni	sun/wd up to 6" x 8', fast grower	\$36.99
Juniper h Blue Star	sun/wd -16" x 3' forming a globe-shaped mound of dense, sparkling silver-blue foliage	\$36.99
Thuja Danika Globe Eastern	Sun-ps/ average maintenance no pruning required 2 x 2', dense globe shaped, bright green	49.99 /2g

## Fruit

Errors in pricing can occur. All prices are final at checkout.

Species / Variety	Culture	Price
Kiwi	Actinidia-Both M&F required. Vine/prune late winter. SUN-F/ WD soil shelter from strong wind. Issai self fruitful the smooth skinned green fruit are the size of grapes and taste like a sweet tropical kiwi without the fuzzy skin. k.Artic Beauty- beautiful foliage as an ornamental. Will pollinate A. kolomikta but not A. arguta.	\$41.99
Asparagus	Asparagus -Plant roots or seed in early spring. Important to keep bed free of weeds.. Do Not cut fruit first year & very little the second year. Equinox- known for its high yield and quality, including long spears and a tight tip..	5/\$21.99
Blackberry	Blackberries Full Sun, well drained Moist humus rich soil; self pollinating. Chester- thornless; heavy crop of very large, jet black, round and very sweet blackberries in mid-	\$29.99



	late summer. Hardy Black- Thornless, bears clusters of large, sweet and juicy fruits on spiny canes.	
Blueberries	Min.2 varieties for best production,For A soil use old sawdust/pine needles,never use lime. Full sun.Prune late winter & fertilize with 10-10-10. Keep 'witches broom out of bushes. It looks like a fast growing 'broom' & snaps off easily. Bluegold- clusters of edible, medium-sized, blue fruits in summer Bluecrop-5 x 5' -high yields, sweet & juicy mid season;Polaris-5'- very large berry that is firm, light blue and has an excellent flavour. Duke-5-7' -ripens early; firm mildly tart berry; Elliot- tangy berries in the Fall. Northland-X for jams & baking,high sugar content. Medium size flavor similar to wild blueberries. Chippeau-4'- mid Season; sweet, perfect for eating cooking and baking & preserves.	\$29.99
Chokeberry	Aronia m Autumn Magic-Sun/wd, any soil-3' x 4'. Edible, not sweet, year round interest; dark purple- black fruit in the Fall, with fiery red foliage.	\$41.99
Heartnut	Heartnut- a cross between a japanese heartnut and a butternut; produces fruit in z3;high in Omega fatty acids.	\$29.99
Horseradish	Horseradish Sun, keep well water. A very invasive,plant where can be controlled.	\$16.99
Strawberry	Strawberry Mulch in spring with well rotted real manure, Sun/M/Wd sheltered location. Eversweet-fruit produced from spring to fall, even in the hottest parts of summer. High yields.	5/\$19.99
Raspberry	Nova Red-Sun,plant 3' apart. Cut back to 1' when planting. Fruit on old wood.	5/\$19.99
Rhubarb	Rhubarb Strawberry-Sun,grows in most any soils,but is a heavy feeder. Fertilize spring with rotted manure. Strawberry Red-retains red color when cooked..leaves are toxic; reliable.	\$19.99
Goose	Ribes Grow in Full Sun/wd/plenty of composted 'REAL' manure; prune regularly for best production. Ribes Hinnonmaki Red - outstanding flavor & high yield. Ribes Hinnonmaki Yellow-improved variety for the home orchard; sweet flesh and a tangy outer skin.	\$29.99
Current	Ribies Currant Lake Red self pollinating- sweet, good source of glucose, fructose and sucrose but also rather tart. Ribies Current Black Down self pollinating-Late.Large, jet-black berries that are juicy and flavorful. X in jams, jellies and juice.	\$29.99
Grape	Vitis-Easy to grow on any sunny wall or fence. Prune mid-winter/Wd/Hr/Neut-alk/Sun -#1 size. Belchas White; very productive for table & wine.fall; Trollhaugen-Blue seedless table/wine/jelly, sweet and mild Concord-like flavor. Somerset- red seedlesstable/wine/jelly;Briana-greenish gold; Perfect as a juice grape or as a light, semi-sweet table wine.E fall. Marchel Foch wines ranging from light red wine to dark "inky" purple colour ; Frontenac Gris-white wine. Osceola-white wine;X table Grape; Frontenac-An excellent hardy blue wine grape. Very widely planted in Quebec vineyards.	\$29.99

### Helpful Hints:

Fruit trees grow best in full sun with well-drained soil that has a sandy and loamy texture.

Deep soil is needed to support their deep root systems!

Use 1/2 lb 10-10-10 fertilizer for every year of the tree, up to 5 lbs. [MAX], on the 'drip line'-or you can use aged 'real manure' & on drip line in spring.

All fruit trees need at least 6 hours of sun each day through the summer & fertile soil with good drainage.

## Grasses & Ferns

### Key Terms:

<b>Wd</b> – Well drained	<b>LM</b> – Leaf Mold
<b>M</b> – Moist	<b>F</b> – Fertile
<b>W</b> – Woodland	<b>MT</b> – Moisture Retentive
<b>HR</b> – Humus Rich	<b>X</b> – Excellent
<b>DH</b> – Deadhead	<b>Gc</b> – Ground Cover
<b>S</b> – Sandy	<b>N</b> – Neutral

<b>PS</b> – Part Shade*	<b>A</b> – Acid
<b>FS</b> – Full Sun	<b>^</b> - Requires winter protection
<b>P</b> – Poor	<b>Alk</b> – Alkaline

\*Part Shade: This usually means that the plant will require early morning sun opposed to noonday sun.

Sizes shown are size at maturity.

Errors in pricing can occur. All prices are at checkout are final.

fern	Athyrium n.pictum Silver Falls-Japanese Painted Fern 12-18", clump forming Silver fronds, long lasting color; purple red midrif; slow growing	\$16.99
grass	Calamagrotis a Karl Forrester - Sun/ps/F/Dry/Soil/MM M/wd/3-5'- a cool season grass that grows most rapidly in the spring season with early blooms. Non invasive	\$16.99
grass	Hierochloe odorata (Sweet Grass) - M PS-/R/W -1-3' medicinal, use for Tea, to heat chapping & windburn, sacred medicines	\$12.99
grass	Imperator c Red Baron-Sun-ps/WD/M- *2'- deep red, and narrow silvery flower panicles in late summer	\$16.99
fern	Matteuccia s Ostrich- Pshade-/wd/M-6'-Ostrich Fern;clump forming upward arching fronds;Fiddleheads;cinnamon fronds	\$16.99
grass	Miscanthus s Cosmopolitan- Sun/M/F -8'- luminous, variegated foliage of arching green leaves with creamy margins and pale green midribs, which turn to golden yellow in the fall,	\$19.99
grass	Miscanthus s Fire Dragon - Sun/M/F 7' upright grass into intense red and orange hues. Silvery plumes dance above the fiery foliage like smoke.	\$21.99
grass	Miscanthus s Little Zebra- Sun/M/F- 4'- trim back to 4" above ground early spring known for it's horizontal banding foliage	\$12.99
grass	Miscanthus s Siberfeder- Sun/M/F 8` - rim back to 4" above ground early spring Large, feathery plumes that emerge a shimmering pinkish-silver in late summer	\$16.99
grass	Miscanthus x Giganthius -12' trim back to 4" above ground early spring fluffy, fan-like plumes Foliage turns a deep burnt orange	\$16.99
grass	Miscanthus Graziella-5'-clump forming narrow green leaves that turn a rich copper-red and orange in autumn and bearing silky, silver flower panicles ...	\$16.99
grass	Muhlenburgin Undaunted-Muhly Grass-30"-blooms late with nice pink heads, may self seed	\$12.99
grass	Papyrus King/Medium/Baby Tut -A- Sun-ps/M/Hr-lovely garden accent,aquatic great heads, shelter from wind one season-4' & taller- Excellent	\$11.99
grass	Pennisetum Purple Fountain -A- Sun-ps/M/Hr-3'-the foliage is topped with slender feathery pinkish flowers plumes, up to 15 in. long Excellent	\$11.99
grass	Pennisetum Vertigo -A- Sun-ps/M/Hr-Black Fountain Grass-This is a big grass—it will grow up over your head if you water it enough- Excellent	\$11.99
grass	Silver Grass Variegatus- Sun/M/F 2'-A gracefully arching ornamental grass, dark green blades highlighted by creamy white stripes. Invasive plant with caution	\$11.99

### Helpful Hints:

Most grasses are deer resistant! Miscanthus is a warm weather growing plant, it needs sun & water in dry conditions.

A fern is a member of a group of vascular plants that reproduce via spores and have neither seeds nor flowers. Keep newly planted ferns well-watered for the first growing season while they are becoming established. Plant them in well-prepared soil in a protected area. Never let plants growing in 4-inch or smaller pots dry out until they reach a mature size and are well established.

Ornamental Grasses boast a huge variety of graceful, low-maintenance grasses that add a wealth of texture and movement to the landscape, in colors ranging from soft pink to bright green or intense purple. Some hardy ornamental grasses are suitable for the coldest climates, while others tolerate intense summer heat or salty air and windy coastal conditions.

## Herbs

### Key Terms:

<b>Wd</b> – Well drained	<b>LM</b> – Leaf Mold
<b>M</b> – Moist	<b>F</b> – Fertile
<b>W</b> – Woodland	<b>MT</b> – Moisture Retentive
<b>HR</b> – Humus Rich	<b>X</b> – Excellent

<b>DH</b> – Deadhead	<b>Gc</b> – Ground Cover
<b>S</b> – Sandy	<b>N</b> – Neutral
<b>PS</b> – Part Shade*	<b>A</b> – Acid
<b>FS</b> – Full Sun	<b>^</b> - Requires winter protection
<b>P</b> – Poor	<b>Alk</b> – Alkaline

\*Part Shade: This usually means that the plant will require early morning sun opposed to noontday sun.

**Pricing:** 1 pack (4 plants) = \$4.09

Single pots = \$2.99-4.99

For various reasons, some herbs may not be available, or additional herbs may be available beyond what is listed here.

Errors in pricing can occur. All prices are at checkout are final.

Common / Latin	Cultivation	Uses
Anise	Wd/Hr/M	used as a flavoring agent. It has a sweet, aromatic taste that resembles the taste of black licorice
Basil [several varieties]	Wd/Hr/M	genovese the best for pesto; Nufar, Red Rubin; Siam Queen, Spicy,Thai; & Regular sweet Basil
Basil EmThai Towers	Wd/Hr/M	Abundant licorice-flavored leaves enhance Thai soups, curries, stir-fries
Basil Emerald Towers	Wd/Hr/M	3'-Well-branched with short internodes makes a beautiful, towering plant with huge harvest potential that stays tidy for many uses
Basil Amethyst	Wd/Hr/M	same taste as regular sweet Basil. Use it fresh to retain the beautiful color. Productive and very late-flowering
Basil Aristotle	Wd/Hr/M	same peppery flavor as other Basils; green, small leaves
Basil Crimson King	Wd/Hr/M	Purple leaf Genovese with great vigor
Basil Holy	Wd/Hr/M	Spicy flavor especially used in Thai cooking. Offers numerous health benefits, ie BP, Immune rspnse, Blood sugar, Inflation etc.
Basil Trybasil	Wd/Hr/M	Try A Trio' Genovese, Serrated Green & dark Red Selections all in one plug
Borage Officinalis	Sun/wd/Hr	chop leaves &; flowers to salad; drinks/tea & honey; lemon.good companion plant for tomatoes, squash; strawberries
Calendula Pot Marigold	Sun/wd/Hr/P	cheerful, daisy-like blooms in shades of yellow, orange, and cream. It has a long history of use as a medicinal and culinary herb
Cat Grass	Sun/wd/Hr	your cats will love you for this treat
Chamomile German	pH6.7/Wd/S	best for tea, the most prolific producer of flowers
Chamomile Roman	pH6.7/Wd/S	traditional ground cover in english gardens; pathways where it is cut like grass
Chervil	Sun/wd/Hr	used in soups &salads, can improve every dish in which parsley is used, great for garnish
Chives Broadleaf	Sun/wd/Hr	rhizome&leaves are edible & can be used in dishes the same way that garlic or garlic chives are used; leaves twisted in early growth
Chives Regular/Garlic	Sun/wd/Hr	uses too numerous to mention
Cilantro-Coriander	Sun/wd/Hr	chinese parsley, grown for it's seed, add to soup, stews or exotic dishes; Vietnamese
Curry plant	Sun/wd/Hr	brush against the plant for a curry fragrance, curry great in potato salad too
Dill	Sun/wd/Hr	great in potato & other salads & of course pickles
Fennel Sw Orion	Sun/wd/Hr	crisp sweet licorice-flavored bulb, but the fonds are used for garnish, and stalks are great in a broth.
Lemon Balm	Wd/pH7.0-	attracts bees, used in tea to soothe nerves
Lemon Grass	Sun	A common ingredient in Thai and Vietnamese cooking, among other Asian cuisines, it has a lemon scent and tartness
Lovage	Sun/wd/Hr	leaves can be picked fresh for salads, celery flavor, add to soups for a fascinating flavor
Marjoram Sweet	Sun/wd/Hr	used in many Italian & greek dishes, a must in every herb garden. Used interchangeably with oregano
Mint Chocolate	Sun/wd/Hr	Leaves of chocolate mint plants add versatility to drinks, desserts and garnishes.
Mint Kentucky Colonel	Sun/wd/Hr	The mint of choice for both Juleps and the Mojitos, a Cuban version of the Mint Julep.
Mint Mojito	Sun/wd/Hr	very very popular for Mojito cocktails
Mint Moroccan	Sun/wd/Hr	the flowers are edible. The leaves have an intense spearmint flavor that can be enjoyed fresh or dry.
Mint Peppermint	Sun/wd/Hr	TRUE Rosemary, relaxes the digestion system causing belching, also for headaches, bowel,muscle ; nerve conditions
Mint Spearmint	Psbst/Wd.M/Hr	TRUE Spearmint, mint jelly, teas, more flavorful before it flowers-don't forget that mint can be kept under control in a pot
Nepeta common	Sun/wd/Hr	Catnip, Excellent for tea
Oregano greek	pH6.7/Wd/S	best known with tomato sauce, hot peppery flavor
Oregano Hot & Spicy	pH6.7/Wd/S	is a great addition to Mexican and Mediterranean dishes with the heat of a mild chilli pepper

Oregano Italian	Sun/wd/Hr	Its taste is zesty and strong and is commonly used in Italian dishes.
Parsley Flat & Curled	Sun/wd/Hr	Italian(flat leaf) stronger flavor & most popular by chef's, curled more popular to decorate food
Rosemary off Arp	Sun/wd/Hr	More hardy than most Rosemary's good flavor for culinary use; Well-suited to regular pruning for small topiaries. Evergreen.
Rosemary off Barbecue	Sun/wd/Hr	makes an excellent potted plant. Valuable culinary uses...Not hardy
Rosemary off common	Sun/wd/Hr	many culinary uses. Rosemary compliments pork, fish, lamb, poultry, wild game, mushrooms & potatoes
Rosemary off (cuttings)	Sun/wd/Hr	this Rosemary is a true Rosemary grown from cuttings instead of seed
Rosemary off Gorizia	Sun/wd/Hr	upright(bonsai)- Spicy,ginger fragrance.Leaves are popular for seasoning meats, stews, and sauces. Not hardy
Rosemary off Salem	Sun/wd/Hr	upright variety can be used for topiary and of course for cooking & drying; pale blue flowers
Rosemary off Tuscan Blue	Sun/wd/Hr	upright & columnar. Flavor & aroma milder than others
Sage Bergarten	Sun/wd/Hr	same as common with LOTS of leaves & no flowers- sauces, stuffings,soups,salads,pork & sausage.
Sage off common	Sun/wd/Hr	creeping most common type for flavoring
Sage Pineapple	Sun/wd/Hr	younger leaves have a greater pineapple scent. steeped in hot water for tea or chopped up and used in other fruit beverages and smoothies.
Sage Purple	Sun/wd/Hr	attractive edible border around herb gardens and vegetable gardens. The flowers attract butterflies and beneficial insects as well.
Sage Tri-color	Sun/wd/Hr	although this herb has the same uses as regular Sage the Tri-color is mainly ornamental..hardy
Savory Summer	Sun/wd/Hr	lemon for tea, summer savory the most popular for flavoring
Savory Winter[Satjura	Sun/wd/Hr	cherished for centuries for its culinary, medicinal, and ornamental value. Attracts pollinators, bees love it, good to plant near bee hives
Stevia	Sun/wd/Hr	a sweetner from natural sources, V V SWEET
Tarragon French(cuttings)	Sun/wd/Hr	essential in sauces,omlettes, marinated meats , so many uses, crush leaves & add to cheese sauce
Thyme Caraway	Sun/wd/Hr	Caraway herb has a strong scent and can be used as a substitute in any recipe
Thyme Doone Valley	Sun/wd/Hr	perfect small leafed & very flat, great for walkways & easily to propagate
Thyme French	Sun/wd/Hr	Summer Thyme” is an ideal culinary ingredient. With a spicy aroma, thrives as an herb that enhances and preserves food!
Thyme v English	Sun/wd/Hr	although thyme's have different uses all are useful in cooking
Thyme v Golden Lemon	Sun/wd/Hr	This thyme, with its colorful leaves and slight lemon scent,
Thyme v Pink Chintz	Sun/wd/Hr	ground cover in low foot traffic areas, yielding a lovely lemony fragrance. Abundance of bright pink flowers
Thyme v Silver Edge	Sun/wd/Hr	The leaves can be used to add flavor to meat dishes, stuffing, stews and marinades.
Verbena Lemon	Sun/wd/Hr	The Queen of lemon-scented herbs;many uses including oils & all lemon flavorings..cold protect
Zaatar origanum syriacum	Sun/wd/Hr	one of the world's greatest seasonings; gives life to soups,dips; mix with olive oil on flatbreads

### Helpful Hints:

Herbs grow best in deep, composted amended soil in a sunny location!

Planting an herb garden is not any different than any other kind of garden. Herbs generally require full sun, and it might be necessary to protect your garden from drying winds with a fence or screen. Herbs aren't particular about the soil but as with most plants, do require good drainage with added compost or well-rotted manure. Consider building raised beds. Add definition & visual interest with paths. Curved paths add more interest & as a focal point at the end of a path add statuary, a sundial, or a nice bench.

## Perennials

### Key Terms:

<b>VV</b> – Very Very	<b>SD</b> – Sharply Drained
<b>Wd</b> – Well drained	<b>LM</b> – Leaf Mold
<b>M</b> – Moist	<b>F</b> – Fertile
<b>W</b> – Woodland	<b>MT</b> – Moisture Retentive
<b>HR</b> – Humus Rich	<b>X</b> – Excellent
<b>DH</b> – Deadhead	<b>Gc</b> – Ground Cover

<b>S</b> – Sandy	<b>N</b> – Neutral
<b>PS</b> – Part Shade*	<b>A</b> – Acid
<b>FS</b> – Full Sun	<b>^</b> - Requires winter protection
<b>P</b> – Poor	<b>Alk</b> – Alkaline

\*Part Shade: This usually means that the plant will require early morning sun opposed to noonday sun.

**Pricing:** \$5.99/pack (2-4 plants/pack), 3” pots stating at \$4.99+ tax.

Errors in pricing can occur. All prices are at checkout are final.

Species/Variety	Description	Price
Agastache Betterbuzz Amber	sun-ps/wd/M- 16" Loose spikes of fragrant, tubular apricot colored flowers on a dwarf form sun-ps/wd/M	\$ 5.99
Achillea m New Vintage™ Violet	Sun/any/wd-2'iolet flower clusters adorned with cream centers from early summer to early autumn.	\$ 12.99
Achillea SS Sangria	Sun/any/wd-3'-red,white eye; all Achillea attractive to butterflies & hummers	\$ 16.99
Achillea m Sky Fire	Sun/any/wd-10"; foliage & flower red; compact	\$ 5.99
Achillea m Summer Berries	Sun/any/wd-2'-rose flat-top flowers with pink overtones and creamy white eyes ,early summer to early fall. X cut	\$ 5.99
Achillea p Peter Cottontail	Sun/any/wd-20" white, button-like flowers that attracts bees and butterflies.	\$ 12.99
Aconitum c 'Arendsii'	Sun/shade.wd/hr-2-4'; erect perennial with dense spires of rich azure-blue flowers in early to mid-fall.	\$ 9.99
Aconitum c Bi-color	Sun/shade.wd/hr-4'; best to stake;blue/white;deer resist; long lived	\$ 12.99
Aconitum Cloudy	sun/shade- 4'; late blooming; white hooded flowers flushed with pale puple-blue.	\$ 12.99
Aconitum n Rubellum'	Sun/shade.wd/hr -2'; a distinctly different monkshood with pretty pink flower spikes.	\$ 9.99
Actaea s Hillside Black Beauty	S-ps/clay/avg M-5' flower spikes ferny, coppery-purple foliage	\$ 26.99
Aegopodium p Variegatum	shade/wdm/Goutweed, GC that quickly forms a dense, weed-proof carpet, even under difficult growing conditions.	\$ 9.99
Agastache 'Kudos Cora	sun-ps/wd/M- 16" long lasting, glowing color. Warm, coral colored plumes are dense honey-mint scent	\$ 16.99
Ajuga Black Scallop	shade/wd/M/HR-4"-ground cover black scallop edge;short spikes of fragrant deep blue flowers	\$ 9.99
Alcea r Chaters Double Purple'	sun/wd/f- 6', mid- late blooming, gorgeous double mix blooms, showy flowers, tall & stately	\$ 9.99
Alcea r Chaters Magnificant	sun/wd/f 6', mid- late blooming, gorgeous double mix blooms, showy flowers, tall & stately	\$ 5.99
Alcea r Mars Magic	sun/wd/f-8'-brilliant red colors. single flowers on tall, sturdy stalk	\$ 5.99
Alcea r nigra	sun/wd/f-8'-Deep blackish-purple, single flowers on tall, sturdy stalk	\$ 5.99
Alcea r Peaches & Dreams	Sun/wd-4-6';fully double, peach-colored blossoms which are sometimes tinged with raspberry-pink.	\$ 9.99
Alcea Spotlight™ Radiant Rose	Sun/wd 6'-Rose-Pink single flowers,blooms midsummer. Hummers, bees, butterflies visit often	\$ 12.99
Allium Bobblehead#	wd-14"- super-sized with 3-3½" pale lilac flowers that leave behind perfectly spherical seedheads	\$ 21.99
Allium Chives (herb)	wd/ 18"…edible with nice round purple flower heads...	\$ 9.99
Allium Summer Beauty	wd-18"- up to 30 soft lavender-pink, bell-shaped flowers.	\$ 16.99
Alyssum Aurinia sax Gold Rush	sun/wd- low growing prune all Alyssum back by 50% after blooming	\$ 5.99
Amsonia Blue Ice	sun-ps/wd/M but not soggy-2'- cut back by 30-50% after flowering to maintain shape; 1st rate garden plant	\$ 16.99
Amsonia t Starstruck	sun-ps/wd/M but not soggy-2'-Terminal clusters of blue, star-shaped flowers bloom in late spring.	\$ 19.99
Anemone Curtain Call Pink	Ps/wd-18"- with semi-double flowers are a bright rose-pink and appear mid to late summer	\$ 19.99
Anemone Puff Pink	Ps/wd/20"-slightly cupped white flowers; A must have late season bloomer; a well behaved grower	\$ 26.99
Aquilegia EB Blue White	sun-ps/wd-12"-compact a profusion of long-spurred, bright blue and white flowers. late spring to early summer,	\$ 5.99
Aquilegia EB Red White	sun-ps/wd-12"-compact a profusion of long-spurred, bright red and pale yellow flowers. late spring to early summer,	\$ 5.99
Aquilegia Songbird Cardinal	sun-ps/wd-2'-Compac,upward-facing flower, red and white bicolor flowers, up to 3 in. long	\$ 12.99
Aquilegia Swan Violet/White	sun-ps/wd-2' - rich colors, long lasting blooms, rapid growing; spring blooms	\$ 12.99
Aquilegia v Blue Barlow'	sun-ps/wd-3', rich violet blue spring blooms; - double	\$ 9.99
Aquilegia v Ruby Port'	sun-ps/wd-3'; Heirloom variety; double; rich ruby red	\$ 9.99
Arisaema triphyllum[Jack n Pulpit	Shade/native wetland;18"- cluster of green berries ¼ inch long, ripen to bright red in late summer	\$ 16.99
Armeria Dreamland	s/wd-15" Pink; very versatile & attractive to beneficials; deer resis	\$ 16.99
Armeria Vivid Dreams	SUN/ Very well drained-12" deep purple, long lasting blooms	\$ 5.99
Artemesia s Silver Mound	S/poor-12";fine silvery needle-like leaves that create a silky mound of soft foliage.Trim when leggy	\$ 19.99
Artemesia Silver Lining	S/poor;16" x 30; broadly dissected silver leaves	\$ 19.99

Artemesia Sunfern™ Olympia	sun/wd/DT-18" Russian Wormwood; deer resist;non invasive	\$ 12.99
Asclepasis t Gay Butterflies	sun/med- M soils-3'-brilliantly colored milkweed with fiery shades of red, orange, and yellow in summer.	\$ 9.99
Asclepias i Cinderella	sun/med- M soils-2-4';pink to dk pink with white crowns;fragrant;good cut; pollinators; Native	\$ 16.99
Asclepias tuberosa	sun/wd/M 18", excellent summer blooms; yellow-orange; fragrant & attractive to butterflies	\$ 5.99
Aster Kickin Carmine Red	S/wd-3'-2" fully dbl dark blue fls; X attractive; late blooming ; pollinators	\$ 16.99
Aster Kickin Lilac Blue	S/wd-3'-2" fully dbl violet blue fls; X attractive; late blooming; pollinators	\$ 16.99
Astilbe a August Light	Ps/wd/M - 30" scarlet red foliage with creamy white flowers	\$ 16.99
Astilbe a Bressingham Beauty	Ps/wd/M-3'- boasting bright pink flowers held in long, gracefully arching plumes; abundant blooms	\$ 19.99
Astilbe c Mig Choco Cherry	Ps/wd/M -4'-dense clusters of cherry-red flowers held on long dark-red stems	\$ 19.99
Astilbe Fireworks Pink	Ps/wd/M -4'-soft pink plumes of florets on gracefully arching stems,	\$ 16.99
Astilbe j Deuschalnd	Ps/wd/M- 20"; green foliage;luminous pure white plumes; this variety should be grown in all gardens	\$ 19.99
Astilbe j Peach Blossom	Ps/wd/M -2'- early summer, each plume consists of hundreds of densely packed tiny flowers ...	\$ 19.99
Astilbe Rise & Shine	Ps/wd/M -27"; Large 8" long, hot pink, pyramidal plumes	\$ 16.99
Astrantia Star of Billions	sun-ps/M-2' papery white flowers; long bloom; pollinators	\$ 16.99
Baptisia australis	S/wd/M 3-4' purple, lupine-like flowers in erect racemes (to 12") atop flower spikes	\$ 19.99
Baptisia Honey Roasted#	sun/wd/M-4' gold flowers age into a mahogany at the same time	\$ 26.99
Baptisia Indigo Spires#	sun/wd/M-4'- long purple spikes with deep yellow keel	\$ 26.99
Bellis Habanera Mix	sun/wd 4",continuous 1" blooms, mixture of red, pink & white colors	\$ 5.99
Bergenia Peppermint Patty	s-ps/wd-22"-bright pink flowers have a pink throat , edged in pink	\$ 26.99
Bletilla striata	PS/M/WD-18"-native orchid; magenta pink; leaves are grass-like	\$ 16.99
Brunnera mac Jack Frost	Ps/mod M-1x1'- Small, forget-me-not-like flowers of light blue with yellow centres	\$ 21.99
Brunnera mac Sea Heart	Ps/mod M-18" early, two-toned pink and blue flowers; frosted silver heart-shaped leaves,	\$ 19.99
Cactus Prickly Pear(Optunia)	sun/V.V.Wd 8", mid season blooms, use high potash to bring into flower, let dry out completely in winter	\$ 9.99
Campanula m Champion Blue	F sun/wd- compact heavy bloomer with deep, dark, purple-blue, bell shaped flowers. X cut Attracts hummingbirds	\$ 5.99
Campanula Pearl white	sun-ps-8" opens up to upward facing 'cup-like' blooms..very nice; mid-season blooms	\$ 5.99
Campanula Rapido Blue blue clip	sun-ps-8" opens up to upward facing 'cup-like' blooms..very nice; mid-season blooms	\$ 5.99
Carnation Grenadine Mix	sun/wd/avg 24", mid season blooms, excellent selection, good cut flowers	\$ 5.99
Centaurea Amethyst Dream	S-ps/wd/-20"; radiant royal purple thistle like flowers in spring- E.summer	\$ 16.99
Centranthus rubra Cocc	sun/wd-2'-CTS Old World wildflower with clusters of tiny dark red flower . A tough, durable plant	\$ 5.99
Cerastium tomentosa	sun/dry 5", early bloomer, snow-in-summer, large white flowers, abundant blooming	\$ 5.99
Chelone Hot Lips	SHADE/M -2', blooms late season Pretty bright pink flowers resemble snapdragons	\$ 16.99
Chrysanthemum m Mam.Red	Sun/wd-3x4'-Semi-dbl red flowers bright yellow centers; mature plants form a Huge mound.hardy	\$ 19.99
Cimicifuga Misty Blue	PS/M/HR- 30"-sml reddish stems; blue green foliage with white flowers	\$ 19.99
Clematis int Blue Ribbons	Sun-ps/wd- Not a climber;nodding, bell-shaped, indigo blue flowers.	
Coreopsis Double the Sun	sun/wd-12-14"- offers X heat and drought tolerance once established;.large semi dbl yellow flowers	\$ 5.99
Coreopsis g Sunfire	sun-wd.-16-18"; upright bushy plant loaded with bright yellow flowers; DH for repeat blooms	\$ 5.99
Coreopsis Jethro Tull	Sun/any/wd/M-12"- blooms profusely early- mid summer golden flowers	\$ 16.99
Coreopsis Uptick Red	Sun/any/wd/M- 12"-red flowers with yellow edges;cut	\$ 16.99
Corydalis Porcelain Blue	S-ps/avg/M-12"-fragrant sky-blue trumpet flowers rise above mounds of blue-green foliage; repeat	\$ 21.99
Crocsmia Lucifer 10-12cm	sun/wd 30", mid season blooms, long lasting intense red blooms, must be lifted & dried	\$ 12.99
Delphinium Del Dasante Blue	sun-ps/wd/M/HR- 20"- Dk Blue white B	\$ 5.99
Delphinium Delphina Pink w Bee	sun-ps/wd/M/HR- 20"- Pink w Bee	\$ 5.99
Delphinium e Del Lt Blu w Bee	sun-ps/wd/M/HR-20"- bright light Blue with white Bee	\$ 5.99
Delphinium Guardian Blue	sun-ps/wd/M/HR-3'5"-tall spikes of satiny flowers. mid-sized with deep-blue petals & strong stems	\$ 5.99
Delphinium MF Lavender wht B	sun-ps/wd/M/HR- 2-3' large semi dbl lavender florets with white B	\$ 5.99
Delphinium NewZelnd Mini Stars	sun-ps/wd/M/HR-2'- colors from white to pink, purple, and blue; Bred in New Zealand; hybrid	\$ 16.99
Delphinium PG Black Knight	sun/M/wd- 4-6' dark purple with dark bees.... For best results provide staking	\$ 5.99
Delphinium PG Mix	sun-ps/wd/m/hr -7', early to late blooming,flowers are semi-double to double mixed colors	\$ 5.99
Dian Barbarini Purple Pcot	sun/wd/M 8" dwarf, compact,fully winter hardy; Purple Picotee	\$ 5.99
Dian PrettyPops Electric Red	sun/wd/M-10"-Dramatic rich red fragrant flowers	\$ 19.99
Dian Single Ladies Red Rouge	sun/wd/M -8"- single, burgundy-red flowers with rosy-pink edges.	\$ 19.99
Dianthus b Barbarini Mix	sun/wd/M 8"-dwarf Sw Wm- late summer blooms of pink, white red; DH for more flowers	\$ 5.99
Dianthus b Rockin Red	sun/wd/provide moisture-18" use in baking etc for clove flavoring; barbatus...sweet william	\$ 5.99
Dianthus b Sw Wm	sun/wd/provide moisture-3' Tall old fashioned Dbl Mix of brilliant colors	\$ 5.99
Dianthus Everlast™ Ruby Edge	sun/wd/M-12" fragrant purple with white Dianthus flushes early in Spring,& again in fall	\$ 19.99
Dianthus 1st Scent ®Coral Reef'	sun/wd/M-1'-ith a distinct white picotee. Attractive gray-green foliage and fragrant, double flowers	\$ 16.99

Dianthus1st Scent Coconut Surp	sun/wd/M-1'- dbl white petals with burgundy red eye & spicy fragrance	\$ 19.99
Dicentra spectabilis	sun-ps/wd/M/HR 44", mid season bloomer, old fashioned bleeding heart, pink flowers	\$ 26.99
Digitalis Artic Fox Rose	sun-ps/wd/M/HR 18"-Tall spikes of pink-rose flowers, pollinators,	\$ 5.99
Digitalis Candy Mntn Rose	ps/wd/HR/M-3'-upright spikes of rose-pink, pale throats with darker spots. Early to mid summer	\$ 5.99
Digitalis Dalmation Mix	ps/wd/M/HR 4',blooms early to late, large bellflowers, dense spikes, healthy & uniform grower.	\$ 5.99
Digitalis Dalmation Purple	ps/wd/M/HR-4'-boasting upright spikes of outward facing, lilac purple flowers with maroon spotted throats. Early to mid flowering	\$ 5.99
Digitalis Foxy	ps/wd/M/HR-2'-Spikes of creamy-white, mauve and pink flowers with spotted throats; Early to mid flowering	\$ 5.99
Echinacea CCD One In A Melon	sun/wd-2'-large[5.5"], single, melon-yellow blooms with dark orange cones.	\$ 26.99
Echinacea Dbl Dppd Wtrmln Sgr	sun/wd-2'-ragrant, fully double, pompom-style flowers up to 4.5 inches wide in magenta-pink	\$ 21.99
Echinacea Orange Fascinator	sun/wd-2-4' bright orange double cones with reflexed, yellow ray florets. Wonderful planted en masse	\$ 26.99
Echinacea pur Cheyenne Spirit	sun/wd-26-28"; 2013 AAS ;flower colors purple, pink, red and orange tones to lighter yellows, creams and white	\$ 5.99
Echinacea pur Magnus super	sun/wd 44", mid season blooms, intense red. 1998 plant of the year	\$ 5.99
Echinacea pur Pow Wow White	sun/wd-20"-Pure white with golden yellow cone'3-4" across with wide overlapping,reflexed petals.Early-late	\$ 5.99
Echinacea pur. 'Carrot Cake	sun/wd-12-16"-Double, bright orange flowers in late summer to fall.pollinators Attracts pollinators.	\$ 26.99
Echinacea pur. 'Double Decker	sun/wd-3-4'-a unique double coneflower, deep rose-pink ray petals & a dark brown central cone,	\$ 12.99
Echinacea purpurea	sun/wd-2';mauve-purple-pink, drooping petals also used as an herb, makes our own immune cells more efficient	\$ 5.99
Echinacea Somb. Fiesta Orange	sun/wd- large, vibrant orange, daisy-like flowers . The long-lasting, single to semi-double.	\$ 26.99
Echinops rito	sun-ps/wd- 4'-clump;blue ball shaped fls;attracted by bumblebees & nocturnal moths	\$ 5.09
Erysimum Erysisible™ Brnz Rose	Sun/M-16"-Fragrant flowers,orange-pinks,magenta &bronze-rose. upright well-branched stems	\$ 16.99
Eupatorium Gateway	sun/M/wd -6' domed clusters of tiny, fragrant, lavender pink flowers	\$ 16.99
Euphorbia myrsinites	S/wd-a succulent perennial with sprawling stems of fleshy, blue-green leaves and star-shaped flowers	
Euphorbia polychroma	sun/wd 16", early blooms, light yellow, lovely color in garden	\$ 12.99
Euphorbia polychroma Bonfire#	sun/wd-14" foliage green, changing to deep maroon. bright yellow bracts in spring	\$ 19.99
Gailardia Arizona Sun	sun/wd/F-12"dwarf, well branched variety; that thrives in dry heat. 3" Burgundy flowers with yellow tips	\$ 5.99
Gailardia Mesa Red A	sun/wd/F-12"dwarf, well branched variety that thrives in dry heat. brick red petals and a darker burgundy cone CTS	\$ 5.99
Gailardia SST Mar Copper Sun	sun/wd/f-9"-Long and heavy blooming, bicolor blooms.strong stems, the rusty-red daisies yellow tips	\$ 5.99
Galium odoratum	Heavy to shady borders or as a GC or edging plant. Edible Can be somewhat aggressive under optimal growing conditions.fragrant	\$ 9.99
Gaultheria procumbens	PS/wd/M- a fragrant evergreen that grows best woodlands and produces red berries in winter.	\$ 16.99
Geranium Dbl Jewel	Sun-ps/wd1-2' clump forming disease resistant; double white star shaped blooms with pink centre	
Geranium m Crane Dance	Sun-ps/wd-2'-single bluish-purple flowers; cut plants back almost to the ground after flowering; red foliage in fall	\$ 16.99
Geranium sang. Elke	S-ps/wd-10"strong pink flowers, upward facing; long bloom season; deer resistant	\$ 16.99
Geum Blazing Sunset	sun/wd-2'- fully double, scarlet blooms; compact yet vigorous.an excellent cut flower.Perfect border plant	\$ 16.99
Geum Pumpkin Orange	Sun-ps/wd/M-12" vibrant orange flowers; spring into early autumn. double, bright orange flowers	\$ 19.99
Gypsophila Festival Pink Lady	sun/wd-30"-Clouds of small pink flowers float above densely branched plants from May-October.	\$ 19.99
Gypsophila Festival Star#	Sun-ps 16"-Clouds of small white flowers float above densely branched plants early-late	\$ 21.99
Heath & Heather Calluna vulg	sun/wd/Ac/ 10-12" mixed selection , blooms in the summer; Heath blooms very early spring	\$ 16.99
Heliopsis Summer Eclipse	sun/wd/avg- 2-3'-False Sunflower; yellow with red centre;attracts bees & butterflies	\$ 21.99
Helleborus Dbl Ellen White	sun-ps/wd/M- large white flowers with pink spots; early spring	\$ 21.99
Helleborus or Pink Lady	sun-ps/wd/M-12-15" glossy, leathery, dark green leaves and its late to early spring pink& rose flowers.	\$ 21.99
Hemerocalis Marque Moon	sun-ps/avg- 24"- large 5" creamy white blooms with gold edge;mid-late summer	\$ 21.99
HEMEROCALLIS - All Varieties	Daylilies look better planted in a mixed border T (tetraploid) are higher in bud count not from tissue culture	
Hemerocallis Band of Fire	sun-ps/avg-30"-right yellow petals with large red eye and massive red edge; mid season & reblooms	\$ 16.99
Hemerocallis Born To Run	sun-ps/avg-28"-mid season, rebloomer; Rich, rosy red flowers have a creamy yellow, incredibly ruffled picotee edge	\$ 19.99
Hemerocallis ful Kwanso	sun-ps/avg-dbl apricot-orange flowers with red markings & yellow eye; mid-late	\$ 16.99
Hemerocallis Kansas Kitten	sun-ps/avg-compact, reblooming,large lavender purple with dark purple eye	\$ 19.99

Hemerocallis Pointed Perfection	sun-ps/avg-warm orange petals with pointed red eye T	\$ 16.99
Hemerocallis Purple D'Oro	sun-ps/avg-20"-medium sized blooms with a robust long blooming period; repeat bloomer	\$ 19.99
Hemerocallis Rocket City	sun-ps/avg-3'- 6" blooms of bittersweet orange tepals with a darker orange eye	\$ 21.99
Hemerocallis Rosy Returns	sun-ps/avg- 16", CTS, excellent display, Rose-pink, an outstanding selection	\$ 16.99
Hemerocallis Schnickel Fritz	sun-ps/avg-16"-dbl white to pale creamy pink flowers with green throat re-bloom	\$ 16.99
Hemerocallis Simon's Overture	sun-ps/avg-2'- lav -rose 6"flowers with satiny deep-plum eyes and matching ruffled edges; mid	\$ 16.99
Hemerocallis Stella Supreme	sun-ps/avg-14"- a profusion citrus-scented, lemon yellow flowers that bloom twice in summer.	\$ 19.99
Heuchera am Marv Mrbl Silve	sun-ps/avg-8" x8" - X GC for dry shade.Purple-Silver leaves;small white bell shaped flowers	6.19/pak
Heuchera Electric Plum#	PS is-8" so bright, it's electric! New leaves emerge near black and lighten to an intense purple	\$ 26.99
Heucherella Pumpkin Spice	Ps is best bronze red leaves hold color well ;dark red stems white flowers	\$ 21.99
Hibiscus Honeymoon™ Dp Red	sun-ps/avg/M-2' Velvet red flowers reach 6 to 8 inches wide! show-stopper; Pollinators	\$ 19.99
Hibiscus Honeymoon™ Lgt Rose	sun-ps/avg/M-2' Lovely rose reach 6 to 8 inches wide! show-stopper. Pollinators	\$ 19.99
Hosta Cool as a Cucumber	Bitmap Bitmap ps/wd/M/HR a medium size with green & white foliage ; Lavender flowers	\$ 19.99
Hosta Emerald Charger	ps/wd/M/HR gold centre with wide green margin; lavender purple flowers	\$ 16.99
Hosta Fire & Ice	ps/wd/M/HR -widely oval slightly twisted leaves w white centre green edge;Lav fls	\$ 12.99
Hosta June	ps/wd/M/HR-1' x 2'- wide, bright yellow margins on green leaves. Lavender bell-shaped flowers	\$ 16.99
Hosta Minuteman	ps/wd/M/HR one of the most popular white margin Hosta, lavender flowers	\$ 26.99
Hosta Paradigm	ps/wd/M/HR gold leaves blue green margins; seersuckered; lavender flowers	\$ 12.99
Hosta White Feathers	ps/wd/M/HR-6"x10"- As it matures, the white leaves transform into a blend of green and cream. Lavender flowers; best in shade	\$ 16.99
Iberis First Flush™ Lavender	sun/DT-6-8"- rock gardens & walls, edgings, borders & as a small scale ground cover; pollinators	\$ 16.99
Iberis semp Alexanders White	sun/DT-8"- large clusters of pure white flowers;reblooms in fall	\$ 19.99
Incarvillea delav.[Hardy Gloxinia	S-pd/avg/wd-herbaceous perennial with trumpet-shaped Pink flowers&fern-like foliage; pollinators	\$ 9.99
Iris e Dinner Plate™ Harlequin	sun/M-3'-Massive double blooms are great for growing near water. 6" double blooms are creamy white edged in purple	\$ 16.99
Iris e Greywoods Catrina	sun/M -3'-white flowers with rose violet veins & pink signals	\$ 12.99
Iris e Variegata	sun/M-wet-small dark purple flowers with yellow eye	\$ 12.99
Iris g Blue Suede Shoes	sun/M-39"-X bloom vigor with usual spring flowering,repeat; 8-10 double and triple-socketed buds.	\$ 21.99
Iris g Recurring Delight	sun/M-3'- rebloom; purple-yellow ruffled, fragrant	\$ 21.99
Iris Louisiana Blk Gamecock	sun/M-great for naturalizing along ponds; huge deep purple blooms with gold highlights on each petal; vigorous	\$ 16.99
Iris pseu Cat's Eye	sun/M-Thrives in M & Wet conditions; dwarf-clumps of rich rose-red blooms bear deep red centres; earliet to bloom	\$ 26.99
Iris pseu Tsukiyono	sun/M- 3-4'-Thrives in standing water; pale lavender flowers adorned with deep purple eyelash	\$ 16.99
Kniphofia Flamenco Mix	sun/wd/f 22", mid to late season blooms, yellow-orange, flamming red	\$ 5.99
Lavandula ang Essence Purple#	sun/wd/avg-14"-Deep purple flowers on tall spikes bloom right from 1st year, Gold Metal winner for it's deep color	\$ 19.99
Lavender a Hidcote Superior	sun/wd/avg- 20",mid season blooms. Silvery-grey leaves. Best color of all lavenders	\$ 19.99
Lavender a Munstead	sun/wd/avg 14", early to late season blooms, bright lilac-blue flowers, silver-grey foliage. Dwarf	\$ 19.99
Lavender i Grosso	sun/wd/avg-30"- hardy lavender stands out for its unusually large, dark-purple flowers& heavy fragrance	\$ 12.99
Lavender i Phenomenal	sun/wd/avg-2', fragrant,multiple lavender blooms, great in containers & a great accent plant. Bees love lavender & butterflies	\$ 21.99
Lavender Sensational	sun/wd/avg-2'- Impressive size and blooms Fragrant; Robust growth & appealing characteristics	\$ 16.99
Leucanthemum s Crazy Daisy	sun/good drainage-2'-DH-spectacular floral display;early-mid summer;fantastic frilly white flowers	\$ 5.99
Leucanthemum s Madonna	sun-/good drainage-10"-beautiful presence of Shasta Daisies for a sunny border . Bright white	\$ 5.99
Leucanthemum s Real Charmer	sun-/good drainage-large, double flowers with fringed petals in cream- yellow; blooms age well	\$ 16.99
Leucanthemum s Sante	sun-/good drainage- double shaggy white petals with yellow centre; great performer	\$ 16.99
Leucanthemum s Whps A Daisy	sun-ps/M -15" HUGE 3" white blooms with yellow centers covers the whole mounded plant.	\$ 19.99
Lewesia c Elise Mix	Sun/wd-6"-one of the most treasured rock garden plants. fleshy rosette of tough evergreen leaves, variety of colors & bi-colors	\$ 12.99
Liatris s Floristan Alba	sun/wd/M-4'-a white-flowered sturdy, dense, 2' long flowering spikes from mid to late. pollinators	\$ 9.99
Liatris s Floristan Violet	sun/wd/M--2'-vivid magenta-purple flower spikes up to a foot long; a staple in cutting garden	\$ 5.99
Lily or Big Smile	sun/poor-30"-Large, 6"wide up-facing blooms,white with dark red speckles & yellow stars fragrant	\$ 9.99
Lily OT Frontera	sun/poor-medium height- massive blooms; dark pink with darker pink stripe, fragrant	\$ 9.99
Lily OT Rising Moon	sun/poor-cross between a trumpet x oriental; large golden blooms with pink edges; fragrant	\$ 9.99
Lily sp Rubrum Uchida	sun/poor-5'-abundance of 8", golden blossoms with pink edges and green throats; fragrant	\$ 9.99
Lily tig flore pleno	sun/poor- 5'- bright and showy, orange-colored double;	\$ 9.99
Lily Tiger Orange	sun/poor-5'- bright orange flowers with black or deep crimson spots, resembling the skin of a tiger.	\$ 9.99
Lily Tiny Cosmic	sun/poor-18" Amazing orange with maroon speckled flowers, 4-7 flowers per stem,	\$ 9.99



Lily trum Regale'	sun/poor-5' white trumpets facing outward, golden throats,& pinkish-purple streaks outside.Fragrant	\$ 9.99
Lobelia SP cardinalis	species of bell flower; red; beautiful around damp areas and water garden edging	\$ 12.99
Lobelia Starship Scarlet	sun/wd/HR-2'; Free flowering,floriferous, hummers; scarlet blooms & near black stems	\$ 5.99
Lupin Gallery Mini Pink Bcol	Sun-Ps/M/N -24"- lovely & showy... they will drop their seed so keep this I mind as to where you plant	\$ 16.99
Lupin Gallery Mini Red	sun-ps/wd- 15"- so beautiful & bright in the garden; pollinators	\$ 16.99
Lupine Gallery Blue bi color	Sun-Ps/M/N -24"- lovely & showy... they will drop their seed so keep this I mind as to where you plant	\$ 5.99
Lupine Gallery Mix	Sun-Ps/M/N -24"- lovely & showy... they will drop their seed so keep this I mind as to where you plant	\$ 5.99
Lupine Gallery Yellow	sun-ps/wd-18"- lovely & showy..will drop their seed so keep this in mind	\$ 5.99
Malva Zebrina	sun-ps/wd/S l4-5' large, red flame blossoms, up to 7",recurved tepals tipped in buttery yellow	\$ 12.99
Monarda Balmy™ Lilac	sun-ps/wd/M/HR-12" PM resis Bright compact flowers; attract butterflies, hummers	\$ 16.99
Monarda Balmy™ Purple	sun-ps/wd/M/HR-12" PM resis Bright compact flowers; attract butterflies, hummers	\$ 16.99
Monarda Balmy™ Rose	sun-ps/wd/M/HR-12" PM resis Bright compact flowers; attract butterflies, hummers	\$ 16.99
Monarda Jacob Cline	sun-ps/wd/M/HR-3'-heads of long tubular deep red flowers.One of the best mildew resistant varieties	\$ 16.99
Monarda Panorama Mix	sun-ps/wd/M/HR- 42", mid season blooms, popular bee plants	\$ 5.99
Monarda Panorama Red	sun-ps/wd/M/HR 42", Red mid season blooms, popular bee & hummer plants	\$ 5.99
Monarda Raspberry Wine	sun-ps/wd M/HR-Tall/disease resist blooms for weeks, attracts pollinators, has a slight lemon scent	\$ 12.99
Montauk Daisy	sun/wd-28", Nipponanthemum; fall blooming pure white fls with yellow centres.Very nice; deer & pest resistant	\$ 12.99
Myosotis Bellamy Blue	sun-ps/wd/HR-6-8"- clusters of sky-blue flowers bloom early in the spring.	\$ 5.99
Nepeta Cat's Pajamas#	sun-ps/wd-12"-ball-shaped habit carries long, dark flower stems that hold indigo blue flowers.Early blooming	\$ 21.99
Nepeta faas Cat's Meow#	sun-ps/wd14"-drought tolerant, deer resistant, long blooming perennial that looks great all season.	\$ 21.99
Nepeta faas Walkers Low	sun-ps/wd-2-3'- high performance & low maintenance variety;	\$ 21.99
Nepeta Kitten Around	sun-ps/wd-12" deep blue flowers summer & into the fall; use in containers as well	\$ 9.99
Nepeta Mauvette Blue	sun-ps/wd-10"-Early blooming, blue-purple flowers stand up well over time,sweet minty fragrance	
Nepeta Purrsian Blue#	sun-ps/wd/HR -18"- compact & tidy, blooms summer into the fall, nice fragrant	\$ 16.99
Nipponanthemum leucnthemum	Montauk Daisy... See Montauk Daisy	
Oenothera Siskiyou Pink	sun-ps/wd/M 8"-asses of large, 2", saucer-shaped, rose-pink flowers with white centres	\$ 16.99
Opuntia polyacantha[Prickly Pear	sun/V.V.Wd 8", mid season blooms, use high potash to bring into flower, let dry out completely in winter[prickly pear]	\$ 9.99
Oregano Drops of Jupiter	sun-ps/wd-2'-ornamental,fragrant, yellow foliage & dense clusters of purple blooms; pollinators	\$ 19.99
Papaver n Champagne Bubbles	sun-ps/wd/HR/M-18" usually self-seed and come back year after year;mixture of orange, yellows. white, red's	\$ 5.99
Papaver or Aglaya	sun best/wd.hr-30" striking, large, salmon-pink flowers adorned with black basal blotches.	\$ 16.99
Papaver or Beauty of Livermore	sun-ps/wd/HR-3'- large, crepe papery, cup-shaped, scarlet red flowers with a dark eye and black splotches at their	\$ 5.99
Papaver or Brilliant	sun best/wd/HR/ 36" provide a cheerful display of huge brilliant scarlet red satiny flowers in l.spring and e summer.	\$ 5.99
Papaver or Harlem	sun best/wd/HR-30" large,burgundy-rose flowers with black base. Reblooms in September. Noted for its long bloom season	\$ 16.99
Papaver or May Queen dbl	sun best/wd/HR-30"- Crepe paper-like, showy, orange-red double flowers with dark centers	6.19/pak
Papaver or Pink Pearl	sun best/wd/HR-16"-long-lived.Large, double-ruffled, crepe-like, lavender-pink flowers&dark purple eyes	\$ 16.99
Papaver or Pizzcato Mix	sun best/wd/hr This compact-growing strain features flowers in shades of white, pink, salmon and scarlet	\$ 5.99
Papaver or Fruit Punch	sun-ps/wd/HR- 6- " bold salmon round flowers with black eyes at the ends of the stems	\$ 5.99
Penstemon Bej. Pk Pearls	sun/dry-MM-16"-Medium pink tubular flowers are a favorite of hummingbirds. Long blooming.	\$ 19.99
Penstemon Dark Towers	sun/dry-MM- 2-3'- dark burgundy foliage and light pink flowers.	\$ 12.99
Penstemon watsonii	sun/dry-MM 12"- outward facing blue tublar bells	\$ 5.99
Penstemon whippleanus	sun/dry-MM-2'- flowers are most often a gothic black purple,but can be violet, blue,&creamy white.	\$ 5.99
Peony Command Performance	sun/wd/M-30"- flowers are among the largest of all peony varieties.a near pure cardinal-red colour,	\$ 39.99
Peony Coral Sunset	sun/wd/M-28" intense sunset coral, semi-dbl with rose overtones, deep yellow stamens, fragrant	\$ 26.99
Peony Duchesse de Nemours	sun/wd/M -20"-Floriferous & very Bright white.medium sized semi double, fragrant; Impressive	\$ 26.99
Peony lac Festiva Maxima	sun/wd/M- 3'- fragrant; fully double; white with crimson flecks L. spring- E summer	\$ 26.99
Peony lac Lancaster Milky White	sun/wd/M-32"-milky-white, bomb-type peony.Double, glossy-white petal edges. Fragrant	\$ 39.99

Peony lac Salmon Chiffon	sun/wd/M-30"-largest, most impressive color is salmon-pink,single,excellent substance, fragrant	\$ 39.99
Peony Primevère	sun/wd/M-3'-plump, anemone-flowered.6-7"across! Guard petals open white.Lemon-yellow centers	\$ 26.99
Peony The Fawn	sun/wd/M-3'- Dk purple buds, dbl pink flowers that opens late in peony season; moderately fragrant	\$ 39.99
Perovskia atrip Bl Jean Baby#	sun/dry/wd- 3' lavender blue flowers; fragrant, deer resistant; fills in quickly	\$ 16.99
Perovskia atriplicifolia	sun/dry/wd-15" -masses of lavender colored flowers on aromatic stems; Pervoskias love the heat	\$ 12.99
Persicaria Blackfield	sun/moderate-M/wd- 3' blood-red flower spikes and dark green leaves.	\$ 26.99
Pervoskia amp Blue Steel	sun/dry/wd -2'-exceptionally long blooming & very hardy; Always looks fresh; Attracts pollinators Exceptionally long blooming and very hardy. Grows in heat and drought, and always looks fresh	\$ 16.99
Pervoskia atrip Lacey Blue	sun/dry/wd -2'- delicate spikes of lavender flowers with blue overtones, Fragrant, pollinators;	\$ 19.99
Phlox p David	sun/dry/AM -up to 4'- fragrant pure white free flowering;attractive to pollinators	\$ 12.99
Phlox p Flame® Pink	sun/dry/AM-18" fragrant -eye catching, bright flowers bloom for weeks; mid-late	\$ 12.99
Phlox p Flame® Red	sun/dry/AM-18" fragrant -eye catching, bright flowers bloom for weeks; mid-late	\$ 12.99
Phlox p Nicky	sun/dry/AM-30"-large, pyramidal clusters of dark magenta-purple flowers,Mildew resistant; fragrant	\$ 12.99
Phlox s Candy Stripes	sun/dry/ 4"- is a delightful evergreen perennial with masses of candy pink and white striped flowers which	\$ 12.99
Phlox s Emerald Blue	sun/dry/ 4"-Creeping Phlox masses of deep blue flowers	\$ 12.99
Phlox s Emerald Pink	sun/dry/ -4"- masses of starry, hot-pink flowers which blanket the dark green, needle-like foliage in mid to late spring.	\$ 12.99
Phlox s Scarlet Flame	sun/dry/ 4"- is an incredibly eye-catching evergreen perennial with masses of vibrant scarlet-red flowers,	\$ 12.99
Phlox s Snowflake	sun/dry/ 4"-masses of starry, pristine white flowers which smother the dark green, needle-like foliage	\$ 12.99
Physostegia v Crystal Peak White	sun/moist-15"- pure white blooms late in season	\$ 12.99
Physostegia v Vivid	sun/moist 16"-lance-shaped leaves and dense spikes of dark purplish-pink, tubular flowers	\$ 12.99
Platycodon Popstar Blue	sun-ps/wd-a short dwarf balloon flower with double periwinkle-blue flowers in summer	\$ 5.99
Platycodon Popstar Pink	sun-ps/wd-a short dwarf balloon flower with semi-double bright pink flowers in summer	\$ 9.99
Polygonatum o Ruby Slipper	shade/wd/M/Hr-20" clump forming fragrant white drooping flowers with red stems	\$ 29.99
Potentilla t Monarch's Velvet	sun/any -18" bears clusters of single, extremely vibrant red flowers all summer	\$ 9.99
Primula Princess Mix	sun-ps/wd/M-10"-Bright flowers are yellow, maroon, lavender, white, pink, or blue-violet, most have large eyes of a contrasting color	\$ 5.99
Primula vialli RH Poker	sun-ps/wd/M-12"- bearing upright poker-shaped, red-tipped lilac-pink flowers. Availability uncertain	\$ 5.99
Primula vulgaris	sun-ps/wd/M-12"-masses of pale yellow single scented flowers. Very popular. Availability uncertain	\$ 5.99
Prunella Summer Daze	sun-ps/avg-1'-A new hybrid with vibrant pink clusters of flowers and compact growth. Pollinators	\$ 16.99
Pulmonaria Twinkle Toes	morning sun/wd-16" Light periwinkle blue flowers. Dark green leaves; silver sprinkling. Low, mounded habit	\$ 21.99
Pulsitila v Alba	sun/wd-8" -boasting large, bell-shaped, pure white flowers, up to 3" on short stems in early spring.	\$ 9.99
Pulsitila v Rubra	sun/wd-8" boasting large, bell-shaped, redflowers, up to 3 ", on short stems in early spring.	\$ 9.99
Pulsitila v Violet	sun/wd-8" boasting large, bell-shaped, purple-violet flowers, up to 3 ", on short stems in early spring.	\$ 9.99
Rodgersia p Chocolate Wings	dappled shade/M/hr-2'-it produces big plumes of glowing deep-pink flowers in early summer,	\$ 19.99
Rudbeckia f Goldblitz(goldstrum)	sun-ps/wd/M-30" Large 3-4" deep golden-yellow flowers with black cones. Plants bloom midsummer into fall..easy to grow	\$ 16.99
Rudbeckia h Autumn Colors	sun/wd/M-2'-Bicoloured shades of burgundy and yellow petals surrounding a dark cone	\$ 5.99
Rudbeckia h Cherry Brandy	sun/wd/M- unique cherry to deep-red blooms that are 2-3" wide.gives impressive garden performance mid summer	\$ 12.99
Rudbeckia h Prairie Sun	sun-ps/wd/M-2'-very large, bright orange flowers.	\$ 12.99
Sagina Crispy	sun/v.wd/gritty 5", mid season blooms, very small white flower, soft light green foliage, good ground cover	\$ 5.99
Salvia Blue by You	sun/wd/M- 2' Long, bright blue flower spikes.DH- remove spent flowers	\$ 9.99
Salvia n Bumbleberry	sun/wd/ M -12"-dark fuchsia pink flowers on dark wine purple stems; type of Sage	\$ 19.99
Salvia n Bumbleblue	sun-wd/M-14" spikes of violet blue flowers with dark purple calyces in E summer.	\$ 19.99
Salvia n New Dimension Rose	sun/wd/ M -16"-sheer back spent blooms and watch the many times this dark pink beauty will rebloom	\$ 19.99
Salvia n New Dimensions Blue	sun/wd/M-18"-chubby spikes of deep and intense violet-blue flowers appearing in late spring. Fragrant-pollinators	\$ 5.99
Salvia p Fshnsta Ballerina Pk	sun/wd/M-18"- soft pink flowers that are held by dark mauve pink calyces.	\$ 19.99
Salvia p Fshnsta Evng Attire	sun-wd/M-20" is the darkest, most vibrant blue Salvia of this collection	\$ 19.99
Salvia p Fshnsta Moulin Rouge	sun-wd/M- 20" this series brings large flowers. This one is a rich shade of deep pink	\$ 21.99

Salvia p Pink Profusion	sun-wd/M-14-16" Dark violet-pink flowers on darker pink calyxes	\$ 19.99
Salvia p Violet Riot	sun-wd/M-2'-unique flowering spikes of vibrant violet blue flowers, adorned with deep purple calyxes.	\$ 21.99
Saponaria ocy Snow Tip	sun/wd 4"- loose clusters of white flowers with small green leaves; blooms in spring	\$ 5.99
Saponaria ocymoides	sun/wd 6", early blooms, good ground cover, cut back hard for re-bloom, excellent for walls	\$ 5.99
Saxifragia Lofty Dk Rose Shades	Ps/wd-6" x 6"-large vigorous flowers; a bright addition to any semi sunny border	\$ 12.99
Scabiosa col Pink Mist	sun/wd -15"- blooms spring-frost; pincushion pink flowers with a hint of lavender	\$ 16.99
Sedum Carl	sun/dry-18"-packs a punch of color with clusters of brilliant magenta pink flowers on reddish stems	\$ 19.99
Sedum Frosted Fire	sun/dry-15"-variegated sport of Autumn Fire Sedum,same brightly colored rosy flower head	\$ 21.99
Sedum Thunderhead	sun/dry-2-3' gray-green foliage and deep rose flower heads	\$ 16.99
Sempervivum Mix	sun'wd- 4"-mixture of differet varieties & colors	\$ 16.99
Stachy's b Furby	sun-ps/wd-16" soft silvery green foliage & unique fuzzy texture	\$ 5.99
Stachys monieri Hummelo	S-ps/wd-20"-scalloped leaves & spikes of purplish-pink flowers;summer; pollinators	\$ 12.99
Stokesia Totally Stkd Riptide	sun/wd-2'-2½-3" flowers are periwinkle blue appear all summer long. Thrives in heat and humidity.	\$ 21.99
Stokesia Totally Stkd Whtcps	sun/wd-2'- 2½-3" totally white with a bluish tinge blooming all summer	\$ 21.99
Tanacetum Robinson Red	s-ps/wd- up tp 3'- Painted daisy showy large red flowers; attracts beneficials & deer resistant	\$ 12.99
Thymus p Coccineus	sun/wd/N-alk ornamental GC.a dense, flat mat of evergreen, dark green leaves that are smothered in bright magenta-red flowers	\$ 9.99
Thymus psued Wolly	sun/wd/N-alk 5", early season blooms, grey-green color, soft fuzzy leaf with lavender flower	\$ 9.99
Thymus s Mother of (Wild)	sun/wd/N-alk 12", mid season blooms, , fragrant, ground cover & between stones	\$ 5.99
Tradescantia a Brainstorm	S/Shade-keep M-2' Abundant, large magenta-purple flowers make a big impact in the garden	\$ 19.99
Tradescantia a Snowcap	sun/shade/wd/M -2' -beautiful white Spiderwort DH for lasting performance- versatile garden displays	\$ 9.99
Tradescantia Concord Grape	sun/shade/wd/M -2' beautiful deep purple Spiderwort DH for lasting performance- versatile garden displays	\$ 12.99
Tradescantia Pink Chablis	sun/shade/wd/M -2' beautiful bright pink Spiderwort DH for lasting performance- versatile garden displays	\$ 12.99
Tradescantia Zwanenburg Blue	sun/shade/wd/M -2'-Triangular, blue-violet blossoms with sulphur-yellow stamens.	\$ 9.99
Verbascum Royalty	sun/avg M/wd-3' compact variety with candelabra like spikes of white blooms with fuzzy purple centers and orange anthers,	\$ 21.99
Veronia Sky Blue	sun/wd-18"-dense upright habit; high bud count; CTS, spring - summer bloom	\$ 5.99
Veronia Sky Pink	sun/wd-18"-dense upright habit; high bud count; CTS, spring - summer bloom	\$ 5.99
Veronica First Love	sun/wd- up to 18"-clumping,fluorescent pink flowers packed into tapered-at-the-top terminal spikes	\$ 16.99
Veronica Magc Shw Wht Wands	sun/wd- up to 16"-The white flower spikes, resembling a fairy godmother's wand	\$ 21.99
Veronica Purpleicious	sun/wd- 8"-deep green glossy foliage and magnificent spikes of long lasting radiant purple blooms	\$ 16.99
Veronica Vernique Raspberry	sun/wd- up to 18"-clump forming;raspberry pink flowers; blooms in late summer	\$ 16.99
Veronica Very Van Gogh#	sun/wd- up to 18"-very easy to grow with a long bloomgiong period. Dark spikes of purple flowers	\$ 19.99
Vinca Bowels Minor	sun-ps/wd/m/avg 18", early season blooms, excellent ground cover, evergreen	\$ 9.99
Vinca vine	SUN/wd-vine-common periwinkle..braod leaf with blue-purple[periwinkle colored] flowers	\$ 5.09
Viola p Eco Artist Palette	pt shade/Wd- 6" large pale lemon yellow blossoms with lavender margins. Floriferous	\$ 12.99

### Helpful Hints:

#### When to Plant Perennials...

- \* Perennial flowers are best planted in the spring or the fall, when temperatures are cooler.
- \* These seasons give them time to get settled and grow new roots.
- \* We often plant our perennials in fall when perennials are on sale and before winter arrives.
- \* Smaller perennials in 4-inch pots cost less and catch up to larger perennials within one year after planting!
- \* Container-grown perennials (a small plant already rooted in soil and growing):
- \* Dig a hole that's a little wider (but no deeper) than the container;
- \* Gently loosen the roots , add a small handful of Bonemeal & add water
- \* Put in perennial & fill in with soil, firm but not packed, Water again

## Pots & Containers

We promote only well grown & healthy plant material. We have built our reputation on our quality & are pleased to say we will continue to do so.

Errors in pricing can happen. All prices are final at checkout.

4.5"- Potted Material:	\$5.99
Dracaena,Fuschia, Ivy Geraniums, Geraniums, Scaevola, Bacopa, Begonias,, Verbena; Nemesia;	
Sunpatiens, New Guinea Impatience, Million Bells, Petunias(& wave), Argyanthemum, and so much more	
6"- large potted plants, Gerbera MG; Veggie pots[JMBO]	\$8.99
6" Mina's, Cobaea & M Glories with Trellis(Hairy Legs)	\$9.99
Jumbo 5.5-Sunfinity Sunflower	\$11.99 LRGer POTS- \$17.99
Jumbo 5.5- Ornamental Annual Grass, Canna. Martha	11.99
Jumbo 5.5- Mandevilla ; Diplandia	19.99
3.5"-Geraniums grown from seed:	2.99
3.5"- Ever popular Wave Petunias:	3.99
Patio Tomato Tubs:-large & fruited	\$19.99
Fertilize 2-3 times a week with 1/2 strength water soluble fertilizer(the blue stuff) & keep plants damp, but not soggy	
8" Hanging Baskets, assorted contents	17.99
10" Hanging Basket Boston Fern[ very large & full]	\$36.99
10" Hanging Baskets:(very large & full of growth-large selection)	21.99 or 3/62.99 =20.99e
10" Hanging Basket Tomatoes & Strawberry	18.99
12" hanging baskets, plastic	37.99
12" Wire Baskets(filled with flowers growing in a ball)	\$46.99 - [Solenia Begonia in a Ball \$66.99;
16" Wire Baskets (filled with flowers & growing in a ball)	wave pet \$-56.99 (mix \$66.99);
24" MONSTER Wave Petunia Baskets	99.99
24" Flower Pouch: very large & full of growth	18.99
8" mum pot...HUGE & GORGEOUS	\$10.99 or 3/\$29.99
perennial paks(4/pak)	5.99/ mostly 4/pak ; sngpots 4.99 /5.99( 3") pot
annual paks(most contain 6/pak)	4.19; sml pots 2.99
herb paks (contains 4 plants each pak)	4.19; sml pots 2.99- 4.99
Veggie paks(4 or 6 pak)	4.19; sml pots 2.99- 4.99
variety herb patio containers	\$16.99 - 29.99

### Helpful Hints:

We will custom fill your containers according to your requests or we will help you to decide what you like. We use new soil every year so you may empty the old soil on your compost pile & wash your pots up nice & spiffy. We will keep your containers until mid-June at no extra cost. All lay-a-ways must be picked up by mid-June or they will be recycled. Sorry please honor our policy on this. It is also very hot in the greenhouses by this time & your wonderful creations will start to deteriorate in that heat.

Helpful Hint: containers need new soil & a proper slow-release fertilizer to keep plants growing & blooming. Always use water soluble (the blue stuff) often Plants grown in containers have special needs. One of the mistakes a new gardener makes is to use topsoil from their in ground garden to pot up their plants.

### BIG BIG MISTAKE!!!!

There are no nutrients, airspace, & it's too dense for proper drainage & root development. It is important to use a good quality potting soil & never the cheapest

one offered by some chain stores. Never ever re-use old soil from your containers for next year's plants. Dump it in your in-ground garden or compost.

# Roses

## Key Terms:

<b>Wd</b> – Well-drained
<b>CTS</b> - Continuous
<b>W</b> - Woodland
<b>HR</b> – Humus Rich
<b>DH</b> - Deadhead

## Pricing: \$31.99

Errors in pricing can occur. All prices are final at checkout.

Above All Orange	clim	10'-Disease resistance, heavenly fruity fragrance and ultra showy salmon-orange flowers. it won't stop blooming.
America Coral Pink	clim	large pure coral pink buds and blooms exude a spicy fragrance. Award-winning. Blooms on new and old wood.
Burning Glow orange	flor	fiery orange rose. Deep orange-red buds open to reveal blooms of a rich, intense orange. Vigorous hardy bush.
Campfire Pink-Yellow	can art	a beautiful variety producing clusters of pink and white blooms with intense yellow centers; habit is upright
Celestial Night Plum	flor	an abundance of big, double ruffled blooms of deep plum-purple on a hardy, rounded plant. Its pleasing, subtle fragrance
Chinook Sunrise Ex Orange	49p	Deep yellow to salmon-orange, yellow stamens, ages to pink . None to mild fragrance
Crimson Cascade Red	clim	vigorous growth and exceptionally dark red blooms. Excellent disease resistance.
Dark Desire	grand	velvety black buds open to reveal deep violet-red blooms with nearly black petal edges, emitting a strong classic rose fragrance
Day Breaker	flor	covered in stunning lightly-scented peach flowers with orange overtones and pink tips at the ends of the branches from late spring to early fall
Delany Sisters	grand	Gorgeous large-flowered rose with clusters of pink-tipped white flowers. Strong scent. Vigorous grower.
Dick Clark	grand	large, 3.5 " across , very double (29 petals), classically-formed, cream flowers adorned with cherry-pink edges
Dizzy Heights	clim	extremely vigorous with scented blooms of rich glowing coral-red that are large, full petalled, and perfectly formed. X disease resistant foliage
Ebbtide Purple	flor	3'-Heavy fragrance, loads of double deep purple roses that bloom early season and repeat well all summer.
Eden Climber White	clim	very full, old-fashioned, globe-shaped blossoms, but in a soft shade of pristine white that takes on a pinkish blush in cool weather.
Emily Carr	canadian artist	5'-At last, a rich, red, disease-resistant rose with exceptional hardiness and continuous bloom! High-centered buds
Golden Showers	clim	repeat-flowering climbing rose, large, sweetly fragrant, semi-double, golden-yellow blooms, 4 in. wide
J P Connell	exp	5'-Fragrant, pale yellow double flowers begin with hybrid tea form, then open to expose the stamens. June flowering with some repeat
John Cabot	exp/climb	10'-Deep pink to red, purple highlights. Mild fragrance. Medium, full (26-40 petals), cluster-flowered bloom form. Occasional repeat late
Kiss Me Kate	clim	10'- vigorous climbing rose with an upright growth habit, medium pink, fully double, quartered
Knockout Peachy	knock out	CTS all season until late in fall compact shrub which produces abundant clusters of semi double shell pink blooms up to 3" across
Knockout yellow Rainbow	knock out	With uniquely colored, coral-pink blooms with yellow centers, more compact than the other family members.
Lady of Shallott	austin	Rich orange-red buds arranged around orange petals. outer petals are salmon-pink with golden-yellow undersides, warm Tea fragrance,
Martin Fronisher s	exp	6'-Fragrant, soft pink, double blooms in mid-season repeat nicely. Vigorous, growing with an upright vase shape
Morden Fireglow	park	4'-Low growing shrub with clusters of attractive pointed buds opening to brilliant orange-red double flowers
Night Owl	clim	10-14' - a deep, wine-purple Climbing Rose with large clusters of single spicy, clove-scented blooms , a repeat bloomer
Oh My	flor	Dark red velvety flowers are produced in great clusters on an upright bush with glossy dark green foliage. Great as a hedge or just by itself.

Oklahoma	hyb t	sweet old fashioned fragrance, color is so dark red it appears to be black velvet in warm weather. huge, fully double, 5" blooms
Outta the Blue	shrub	fully double, fragrant, 3" blooms with 40+ petals that are bluish purple.
Quicksilver Arborose	clim	Very full, romantic, lavender flowers shine against dark-green, disease-resistant foliage.
Rosanna	clim	Robust and floriferous rose, flowering continuously in small clusters of breathtaking nostalgic salmon pink blooms
Royal Bonica	shrub	Outstanding improved version of the famous landscape rose! Lush pink blooms are fully double and look wonderful in mass plantings or a single
Tabris	flor	7'-White with dark pink to light red petal edges. Mild fragrance. up to 20 petals. Blooms in flushes throughout the season.
Yellow Jacket	shrub	Deep yellow, ages to lighter . Mild fragrance. 26 to 40 petals.Flushes throughout the season

**Helpful Hints:**

Use a proper Rose fertilizer for the best results and don't splash water on the leaves. Roses are heavy feeders and require a water-soluble fertilizer like PEI fish fertilizer or other water soluble every three weeks. Always make sure that the liquid goes right to the root. This is good info for any plant! Top dressing would be much better, and we recommend this as roses are heavy feeders. The proper roses food suggested is made specifically for roses and contains the necessary trace elements needed by the plant to perform well.

Floribundas/Austins are continuous bloomers. Add a handful of Epsom Salts every 2-3 weeks. Apply on the drip line.

Climbing /Rugosa/Miniature/Hedging roses blooms on old wood. If you prune in the spring, you will have no flowers that season.

Growing climbing roses requires training as they will usually grow quite wayward. Use a good sturdy trellis & ties that will degrade over the years. The plant must be tied as it grows & some pruning will be required to keep the plant in a somewhat reasonable size. A dead tree would be a perfect trellis.

Perhaps Rugosa Rose is the most popular species used for hedging. It is dense, hardy, colorful & has healthy foliage.

Hybrid T/Grandifloras/Floribundas/English roses need to be cut back to 8-12" from the ground in the very late fall/early winter (to avoid the wind shaking the roots loose). If you prune too early in the fall, they can think it is spring and start to put out new growth which of course will freeze out.

Black Spot & powdery mildew -use a fungicide-Defender is a good rose product for rose care.

Don't water the leaves and be especially careful when the sun is out. Defender is a good product for rose care.

Clay soil is usually recommended for planting because of its ability to hold water. You will have to use organic matter to make your soil more pliable. Two sources would be 'real' old fashion aged manure is the best (or store-bought would work but no cheapies) or compost, always well broken down. Peat moss is always a valuable soil conditioner. Roses must have a consistent supply of water and nutrients to grow.

# Trees

**Key Terms:**

<b>Wd</b> – Well drained	<b>LM</b> – Leaf Mold
<b>M</b> – Moist	<b>F</b> – Fertile
<b>W</b> – Woodland	<b>MT</b> – Moisture Retentive
<b>HR</b> – Humus Rich	<b>X</b> – Excellent
<b>DH</b> – Deadhead	<b>Gc</b> – Ground Cover
<b>S</b> – Sandy	<b>N</b> – Neutral
<b>PS</b> – Part Shade*	<b>A</b> – Acid
<b>FS</b> – Full Sun	<b>^</b> - Requires winter protection
<b>P</b> – Poor	<b>Alk</b> – Alkaline

\*Part Shade: This usually means that the plant will require early morning sun opposed to noonday sun.

Errors in pricing can occur. All prices are at checkout are final. Sizes are at maturity.

Species	Culture	Price
Acer plat Harlequinn	sun-ps/M/wd/f-40'-white-variegated light green foliage throughout the season. Leaves turn yellow in fall	\$199.99
Cornus kousa Satomi	sun-ps/wd/mod M-25'- 4 pointed petal flowers are white ; extremely attractive; Red berries follow flowers	\$ 199.99
Cornus kousa Venus	sun-ps/wd/mod M- 20'-has large creamy-white bracts that bloom in late spring or early summer;X drought tolerance	\$ 199.99
Magnolia [Girls] Ricki	Sun-ps/Wd/M-20' -cup shaped petals,reddish-purple color..slow growing & very floriferous fragrant	\$ 199.99
Magnolia Galaxy	Sun-ps/Wd/ 35'- stunning, large, deep reddish purple flowers that bloom late in the season on otherwise bare stem	\$ 199.99
Magnolia stella Royal Star	Sun-Ps/Wd/M-15'-slow growing slightly fragrant 3-4" star-shaped WHITE flowers; flowers open before leaves	\$ 149.99
Malus Louisa	Sun-ps/Wd/M-15- 20'- excellent weeper with good disease resistance; Red buds open in spring to single fragrant pink flowers	\$179.99
Malus Prarie Fire	Sun/Wd/M/F-20'-upright,rounded with a long season. pinkish-red buds, slightly fragrant, dark pink to red flowers appear in mid-late spring.	\$179.99

### Helpful Hints:

When planting large trees, it is important to stake the tree with 3 stakes to keep the wind from shaking the roots loose. Use proper ties so as not to damage the bark. Also, before planting, prepare & water the hole well. All newly planted material must be well watered right up to freeze-up.

During the first couple of growing seasons, your newly planted tree is expending a lot of energy trying to get its roots established in the soil. It is important NOT to depend on the rain to water deep enough to support healthy roots. Keep grass well away from the tree trunk so as not to do damage from the mower.

## Veggies

**Pricing:** \$4.09/pack (4-6 plants per pack)

Single pots starting at \$2.99

We also carry a good selection of ready-to-go patio tomatoes (\$19.99) and other ready-to-go veggies and herbs.

Errors in pricing can happen. All prices are final at checkout.

Arugula Myway	nutty flavor used in salads..this is a real good herb & good for you also
Beans	yellow & green
Beets	Cylindrical.... Nice for slicing & pickling; the beets were popular with shopper's for transplanting
Broccoli	Waltham
B.Sprout	Jade Cross
Cabbage	Stonehead early, Multikeeper late, red, savoy,regular sized pak choi
Carrots	Orangeblaze 10" variety & Rainbow blend- the carrots were popular with shopper's for transplanting
Celeriac-	the root or knob is the edible part-generally known as the rooted celery
Celery-	Tango
C'flower-	Amazing
Corn	Delectable-bi-color
Cukes-	Cucumelon-grape sized cukes crossed with watermelon.Looks exactly like minature melon. Unique
Cukes-	Slicemore(the best); Marketmore regular, english, pickling; heirloom Lemon(heirloom);Diva(lunchbox); several lunch box varieties
Eggplant	Rosa Banca & Classic
Gourds	a mixed variety
Husk cherry	Aunt Molly's golden husk cherries, excellent to eat once the husks dry...mmmm yummy
Kale	Darkibor;Dinosaur;Red Russian & Winterbor(common- salads(remove heavy veins)full of nutrients,
Lettuce	Red Sails, oakleaf, buttercrunch, green; red; leaf, head, red, romaine; mesclun mix
Onion	Leeks,red,spanish,yellow winter; bunching, Walla Walla(similar to Vidahlia)
Peas	Premiun Early...tall variety; climbing. The peas were popular with shopper's for transplanting
Pepper	Sweet- green, red, yellow, orange, purple, banana, pimento, Hot-cayenne, Chili, Habanero,Jalapeno; sweet heat
Pumpkin	Dills, Small Sugar & Howden

Radish	Early variety
Spinach	Green Beret- slow to bolt
Squash-	Summer- yellow & green zucchini & Winter varieties incl. Spaghetti
Strawberry	Compact, hardy plants produce a pleasing plethora of very sweet, conical mid-sized fruit on strong stems. Large,
Swiss Chard	red & white
Tomato	Pear-red&yellow;Cherry-tiny tim; sw 100 & Sw million; Sun Sugar; Sugar Rush;cherry patio. Indigo Blueberry. Heirloom- Amish Paste;Brandywine; Cherokee Purple;Jubilee; Mortgage Lifter; San Moranzo; Low Acid-Jubilee; Sun Sugar, Sugar Rush Sungold; Paste-Roma; Regular- Scotia; Celebrity; Beefsteak-beefsteak; Big Beef; Grape- Juliet
Turnip	Laurentian...a winter keeper
Watermelon	Sugar Baby; with a warm environment & rich soil these can easily reach 20lbs

## Vines

### Key Terms:

<b>Wd</b> – Well drained	<b>LM</b> – Leaf Mold
<b>M</b> – Moist	<b>F</b> – Fertile
<b>W</b> – Woodland	<b>MT</b> – Moisture Retentive
<b>HR</b> – Humus Rich	<b>X</b> – Excellent
<b>DH</b> – Deadhead	<b>Gc</b> – Ground Cover
<b>S</b> – Sandy	<b>N</b> – Neutral
<b>PS</b> – Part Shade*	<b>A</b> – Acid
<b>FS</b> – Full Sun	<b>^</b> - Requires winter protection
<b>P</b> – Poor	<b>Alk</b> – Alkaline

\*Part Shade: This usually means that the plant will require early morning sun opposed to noonday sun.

Errors in pricing can occur. All prices are at checkout are final.

Kiwi	Actinidia-Both male & female are required for fruit production.Twining vine/prune late winter. SUN-F/ WD soil with shelter from strong winds	\$39.99
Issai self fruitful the smooth skinned green fruit are the size of grapes and taste like a sweet tropical kiwi without the fuzzy skin		
Ampelopsis brev	sun-ps/M/HR-up to 20' - Porcelain Berry- aggressive but not so much in colder climates	\$39.99
Elegans-variegated. New color has white, green & pink. Small lilac-blue berries in the fall		
Celastris	American Bittersweet Sun/wd-HR/M- up to 20' in length	
Diane & Hercules highly colored red berries with yellow shells. Berries widely used in floral arrangements	\$46.99	
Clematis	Grow in fertile, humus rich, moist well drained soil. Sun Keep roots & base	\$29.99
group 1	of plant in the shade. Mulch heavy in late winter	
no pruning required		
Mrs N Thompson - bold violet star-shaped flowers with red stripes		
group 2	The President-10'-flowers, up to 7 in. (18 cm), in shades of rich violet-blue	
prune out dead wood	Jackmanii Superba- 8' - 5" blooms are a delicious dark purple, making it one of the prettiest flowering vines.	
bloom cut back 1/2	Volunteer- lavender pink-lilac sepals, each with a carmine stripe; blooms late spring to early Fall	
& plant will re-bloom	Vicki- lightly ruffled bright pink with magenta bar;long blooming 3-4'	
group 3	Sarah Elizabeth-Pink with purple bar; 4-6' repeat bloomer	
prune to the ground	Gurnsey Flute-reliable repeat bloomer with large whiteflowers and red anthers;	
blooms on nu wood	Piilu-pale pink&red-violet with light purple-pink sepals. Blooms CTS from top to bottom, first as double.	



int Blue Ribbons-very large, 1¾" indigo blue flowers, up to three times larger than typical! Bush type, non vining		
Euonymus f	Purple Creeper Full Sun-Ps/wd- 20' fast growing, good for erosion control dark green leaves BLE'Grn - bloom cut back 1/2	
Hedera helix	sun-ps/ HR/wd/M- excellent ground cover to deal with soil erosion	
Thorndale English Ivy -grey-green foliage edged in chartreuse to bright yellow color. E sy to grow & very rewarding	\$12.99	
Hydrangea a	petiolaris-wd soil, part sun; sprawling deciduous vine reaching 40 plus feet. White flowers mid summer	\$61.99
Lonicera	Honeysuckle- up to 15 feet in fertile, humus rich, moist well drained soil,Sun/Ps, prune spring	
Lonicera peric	Scentsation-Vigorous, considered the most scented ,intensely fragrant, cream&yellow flowers from late spring - summer	\$51.99
Lonicera brownii	Dropmore Scarlet-long blooming season of showy flaming red tubular flower clusters with yellow throats. NOT fragrant	\$29.99
Lonicera hect	Goldflame purple to deep pink -purple buds open to sweetly fragrant yellow trumpet-like blooms	\$29.99
Lonicera jap	Halliana-sun-ps/avg well drained soil-fragrant twining pure white to pale yellow late spring to late summer	\$36.99
Cobaea scandens ANNUAL V. fast growing & very large cover-up for 1 season		\$9.99/6" pot
Mina lobata	Vigorous growing ANNUAL vine that blooms all summer in orange yellow & white	\$9.99/6" pot
Parthenocissus	qu Virginia Creeper-Its root-like tendrils attach themselves to any non-smooth surface, even brick, also a ground cover.	\$41.99
Vinca	Bowles -very fast growing,leaves green ,blooms with a violet flower; does well in a shady area	\$9.99
Wisteria	Blooms in early Spring. Plant in fertile, moist but well-drained soil.Sun/Ps..12-20" long flowers	41.99
	Blue Moon-30'-one of the hardiest; highly tolerant to cold and features stunning chains of lavender flowers 3 x a year	

## Water Plants

### Key Terms:

#1 – Hardy, shallow water (2-4”) or consistently wet
#2 – Tropical, shallow water (2-4”) or consistently wet: submerged
#3 – Water Lilies: plant 3-4' deep
#4 – Floating
#5 – Submerged oxygenators: act as natural filters

Errors in pricing can occur. All prices are final at checkout.

Caltha paultris Plena	#1 -much loved for their showy yellow buttercups that grace streamsides and other wet places in early spring	\$ 9.99
Iris ensata(Japanese)	#1- many lovely colors to choose from and an excellent choice for water gardens	see perennial
Iris Louisiana Blk Gamecock	#1-sun/M-huge deep purple blooms with gold highlights on each petal; vigorous	\$ 16.99
Iris ps Cat's Eye	#1- sun/M-dwarf-clumps of rich rose-red blooms bear deep red centres; earliet to bloom	\$ 26.99
Iris pseu Tsukiyono	#1- sun/M- 3-4'-pale lavender flowers adorned with deep purple eyelash	\$ 16.99
Iris siberican	#1- many lovely colors to choose from and an excellent choice for along borders of water gardens	see perennial
Juncus e spiralis	#1- Sun-Ps corkscrew-like green foliage, interesting 18-24"	\$ 5.69
Lobelia Starship Scarlet	#1- sun/wd/HR-2'; Free flowering,floriferous,very attractive to hummers; scarlet blooms & near black stems	\$ 9.99
Lysmachia( creeping Jenny)	#1- bright green wavy leaves, agressive ground cover.	\$ 4.99
Papyrus	#4-3 sizes.King,Medium & Prince- starburst heads;X background for other watergarden plants (NOT HARDY)	\$ 9.99
Water Hyacinth	#4- lrg thick leaves with lavender fls,very nice, use proper fertilizer	\$ 9.99

Water Lettuce	#4- grows floating on the surface water, and its leaves form a rosette, with dense, submerged roots beneath it.	\$ 9.99
Water Lily Charles de Meurville	#3- free-flowering, hardy waterlily producing an abundance of large red-pink blooms with bright orange stamens	\$ 31.99
Water Lily Marliac	#3-Very clear white flower that tends to stay open longer than most. The flower size is 4 - 6" in diameter and	\$ 31.99
Water Lily Pink Sensation	#3-beautiful & the best bright rosy pink, 4" flowers from spring into fall; very fragrant	\$ 31.99